

SPEED DESIGN
MONTREAL ROAD - 45 MPH



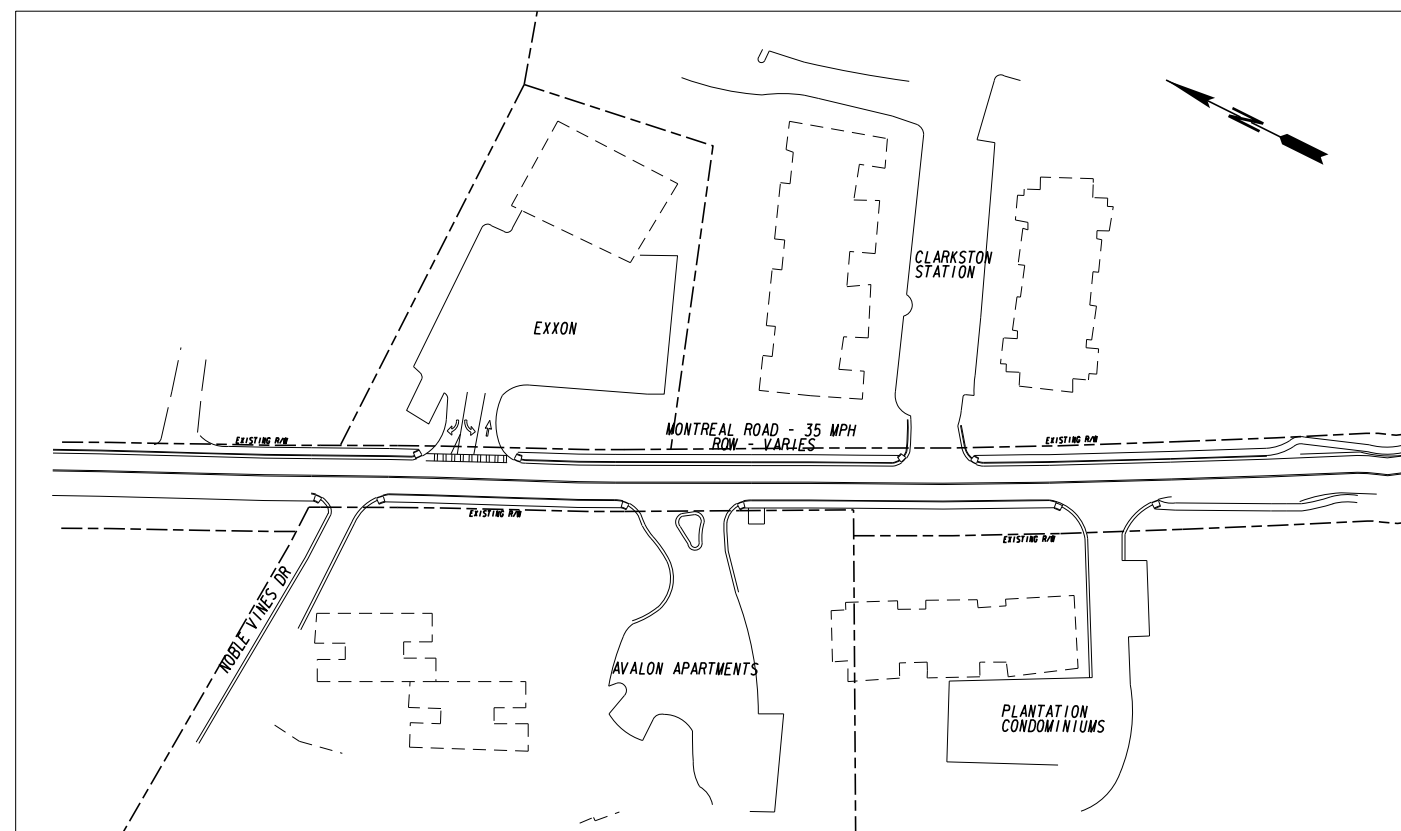
EXHIBIT B

CITY OF CLARKSTON

PLAN OF PROPOSED PEDESTRIAN CROSSWALK IMPROVEMENT

PREPARED FOR: KEITH BARKER
CITY MANAGER

NOTE :
ALL REFERENCES IN THIS DOCUMENT, WHICH INCLUDES ALL PAPERS, WRITINGS, DOCUMENTS, DRAWINGS, OR PHOTOGRAPHS USED, OR TO BE USED IN CONNECTION WITH THIS DOCUMENT, TO "STATE HIGHWAY DEPARTMENT OF GEORGIA," "STATE HIGHWAY DEPARTMENT," "GEORGIA STATE HIGHWAY DEPARTMENT," "HIGHWAY DEPARTMENT," OR "DEPARTMENT" WHEN THE CONTEXT THEREOF MEANS THE STATE HIGHWAY DEPARTMENT OF GEORGIA, AND SHALL BE DEEMED TO MEAN THE DEPARTMENT OF TRANSPORTATION.



PREPARED BY: _____



8/22/2018

PLANS COMPLETED	- -
REVISIONS	

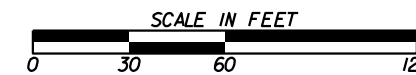
THE DATA, TOGETHER WITH ALL OTHER INFORMATION SHOWN ON THESE PLANS OR IN ANYWAY INDICATED THEREBY, WHETHER BY DRAWINGS OR NOTES, OR IN ANY OTHER MANNER, ARE BASED UPON FIELD INVESTIGATIONS AND ARE BELIEVED TO BE INDICATIVE OF ACTUAL CONDITIONS. HOWEVER, THE SAME ARE SHOWN AS INFORMATION ONLY, ARE NOT GUARANTEED, AND DO NOT BIND IN ANY WAY.

EXISTING SIGNAL

- CONTROLLER CABINET
- STRAIN POLE
- TIMBER POLE
- DOWN GUY
- MAST ARM
- STREET LIGHT
- 3 SECTION HEAD
- 4 SECTION HEAD
- 5 SECTION HEAD
- OVERHEAD SIGN
- PEDESTAL POLE
- PED SIGNAL HEAD
- CURB CUT RAMP
- PULLBOX, TP 1
- PULLBOX, TP 2
- PULLBOX, TP 4
- PULLBOX, TP 5
- 6x6 PULSE LOOP
- 6x18 CALL LOOP
- 6x40 PRESENCE LOOP (DIPOLE)
- 6x40 PRESENCE LOOP (QUADRUPOLE)
- CONDUIT
- RAILROAD CONTROLLER
- SIGN POST

PROPOSED SIGNAL

- CONTROLLER CABINET WITH BATTERY BACKUP
- CONTROLLER CABINET
- STRAIN POLE
- TIMBER POLE
- DOWN GUY
- MAST ARM
- STREET LIGHT
- 3 SECTION HEAD
- 3 SECTION HEAD W/ BACKPLATE
- 4 SECTION HEAD
- 4 SECTION HEAD W/ BACKPLATE
- 5 SECTION HEAD
- 5 SECTION HEAD W/ BACKPLATE
- OVERHEAD SIGN
- PEDESTAL POLE
- PED SIGNAL HEAD
- CURB CUT RAMP - (See ADA Detail)
- PULLBOX, TP 1
- PULLBOX, TP 2
- 6x6 PULSE LOOP
- 6x18 CALL LOOP
- 6x40 PRESENCE LOOP (DIPOLE)
- 6x40 PRESENCE LOOP (QUADRUPOLE)
- CONDUIT
- RIGID CONDUIT
- RAILROAD CONTROLLER
- SIGN POST



REVISION DATES

NO.	DATE	DESCRIPTION

SIGNAL PLANS

RRFB INSTALLATION - SIGNAL LEGEND
1086 MONTREAL ROAD

CHECKED:	DATE:	DRAWING No.
BACKCHECKED:	DATE:	27-0001
CORRECTED:	DATE:	
VERIFIED:	DATE:	

TRAFFIC SIGNAL GENERAL NOTES

1. THE COMPLETE SIGNAL INSTALLATION SHALL CONFORM TO ALL APPROPRIATE PARTS OF THE MANUAL ON UNIFORM TRAFFIC CONTROL DEVICES CURRENT EDITION, INCLUDING SUBSEQUENT PUBLISHED RULINGS.
2. ALL MATERIALS AND WORK SHALL BE IN ACCORDANCE WITH THE GEORGIA DEPARTMENT OF TRANSPORTATION CURRENT STANDARD AND SUPPLEMENTAL SPECIFICATIONS AND STANDARD DETAILS FOR TRAFFIC SIGNAL INSTALLATION (WITH EXCEPTIONS AS DIRECTED BY THESE PLANS OR CITY OF CLARKSTON). INSTALLATION SHALL MEET CURRENT NFPA NATIONAL ELECTRICAL CODE AND ANSI NATIONAL ELECTRICAL SAFETY CODE.
3. MATERIAL CERTIFICATION IS REQUIRED PRIOR TO BEGINNING ANY SIGNAL INSTALLATION WORK. THE CONTRACTOR SHALL SUBMIT DOCUMENTATION TO CITY OF CLARKSTON DESIGNATED REPRESENTATIVE.
4. THE CONTRACTOR SHALL LOCATE UNDERGROUND UTILITIES IN THE VICINITY OF NEW PEDESTAL POLES BEFORE INSTALLATION. MINOR SHIFTS (UP TO A MAXIMUM OF 5 FEET) IN LOCATION OF NEW PEDESTAL POLES, AT THE DISCRETION OF THE ENGINEER, ARE ACCEPTABLE TO AVOID UNDERGROUND UTILITIES. MINIMUM CLEARANCES FROM EDGE OF PAVEMENT SHALL BE MAINTAINED.
5. ALL PEDESTAL POLES, BASES, AND SIGN POSTS TO BE INSTALLED SHALL HAVE A BLACK POWDER COAT FINISH.
6. ONLY THE MODELS OF VEHICLE SIGNAL MODULES, PEDESTRIAN SIGNAL MODULES, AND PUSHBUTTONS THAT HAVE BEEN TESTED AND PRE-APPROVED BY CITY OF CLARKSTON SHALL BE USED. CONTACT CITY OF CLARKSTON DESIGNATED REPRESENTATIVE FOR A LIST OF APPROVED ITEMS OR TO SUBMIT ITEMS FOR TESTING AND APPROVAL.

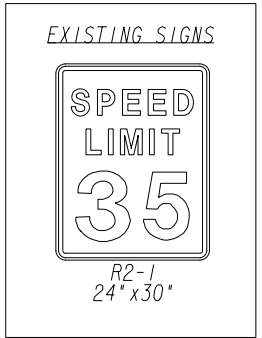
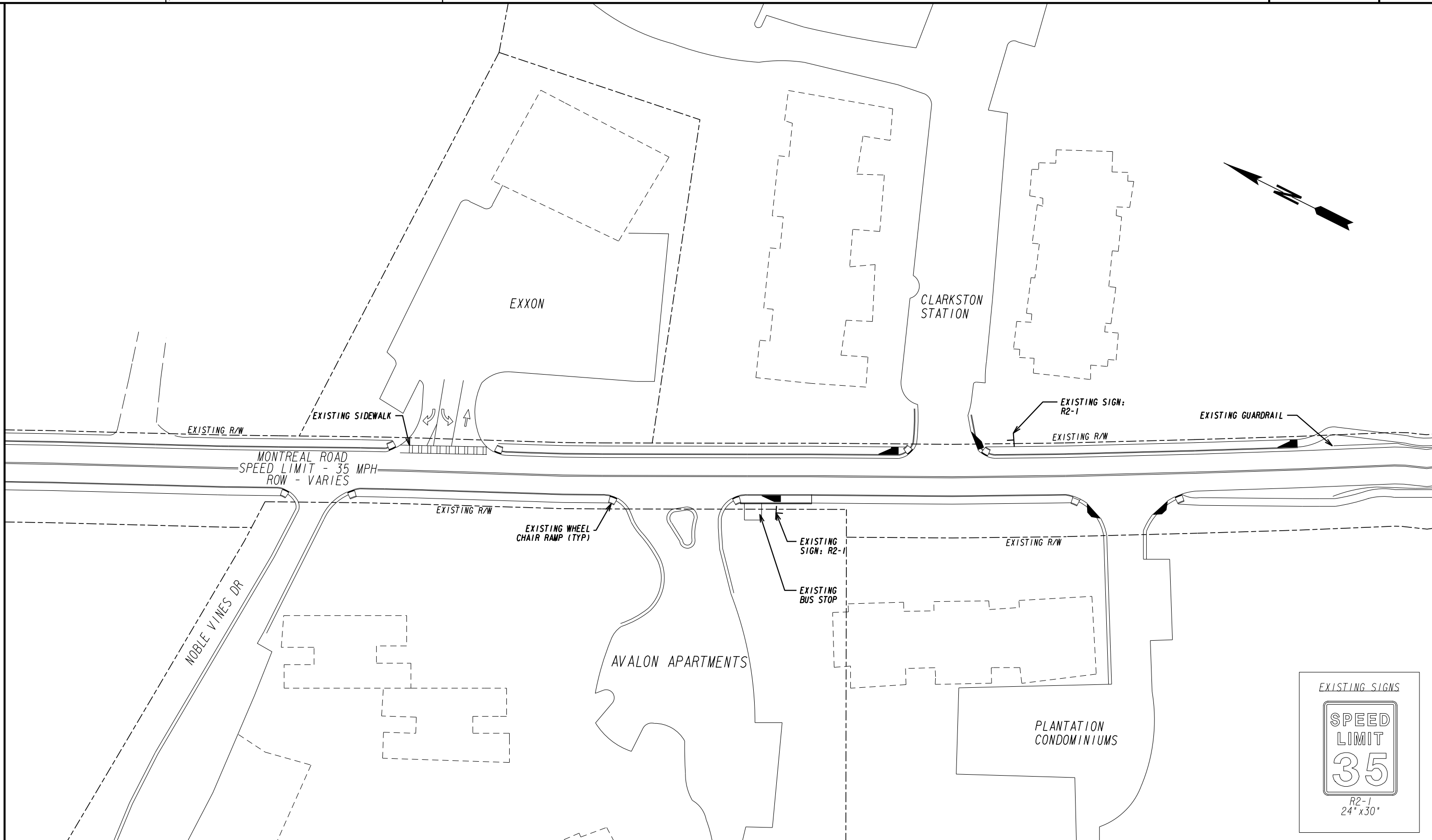
CONTACT: LARRY KAISER, PE; COLLABORATIVE INFRASTRUCTURE SERVICES, INC.
404-909-5619
7. ALL SIGNS TO BE INSTALLED, INCLUDING THOSE MOUNTED TO RECTANGULAR RAPID FLASHING BEACON PEDESTAL POLES, SHALL HAVE BLACK SHEETING ON THE BACK SIDE OF THE SIGN PLATE.
8. IN THE EVENT THAT FIELD LOCATIONS VARY FROM THOSE SHOWN IN PLANS, CONTRACTOR SHALL VERIFY WITH CITY OF CLARKSTON INSPECTOR PRIOR TO CONSTRUCTION.
9. ALL PEDESTAL POLES REQUIRED FOR RECTANGULAR RAPID FLASHING BEACON INSTALLATIONS SHALL BE LOCATED DIRECTLY BEHIND RAMPS, ON THE SIDE NEAREST TRAFFIC, AS SHOWN IN PLANS.
10. ALL DISTURBED AREAS SHALL BE SODDED WITH BERMUDA SOD.
11. ALL AREAS OF SIGN AND/OR TREE/SHUBBERY REMOVAL SHALL INCLUDE THE REMOVAL OF THE FOUNDATION AND STUMP BELOW GRADE. THESE HOLES SHALL BE BACKFILLED, GRADED TO DRAIN, AND COVERED WITH BERMUDA SOD. PAYMENT SHALL BE INCLUDED IN PAY ITEM 210-0100 GRADING COMPLETE.

REVISION DATES

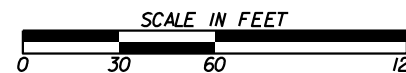
SIGNAL PLANS

RRFB INSTALLATION - GENERAL NOTES
1086 MONTREAL ROAD

CHECKED:	DATE:	DRAWING No.
BACKCHECKED:	DATE:	27-0002
CORRECTED:	DATE:	
VERIFIED:	DATE:	



1255 CANTON STREET
SUITE G, ROSWELL, GA 30075
phone: 678.461.3511
CALYXengineers.com
GA License No. PEF003715



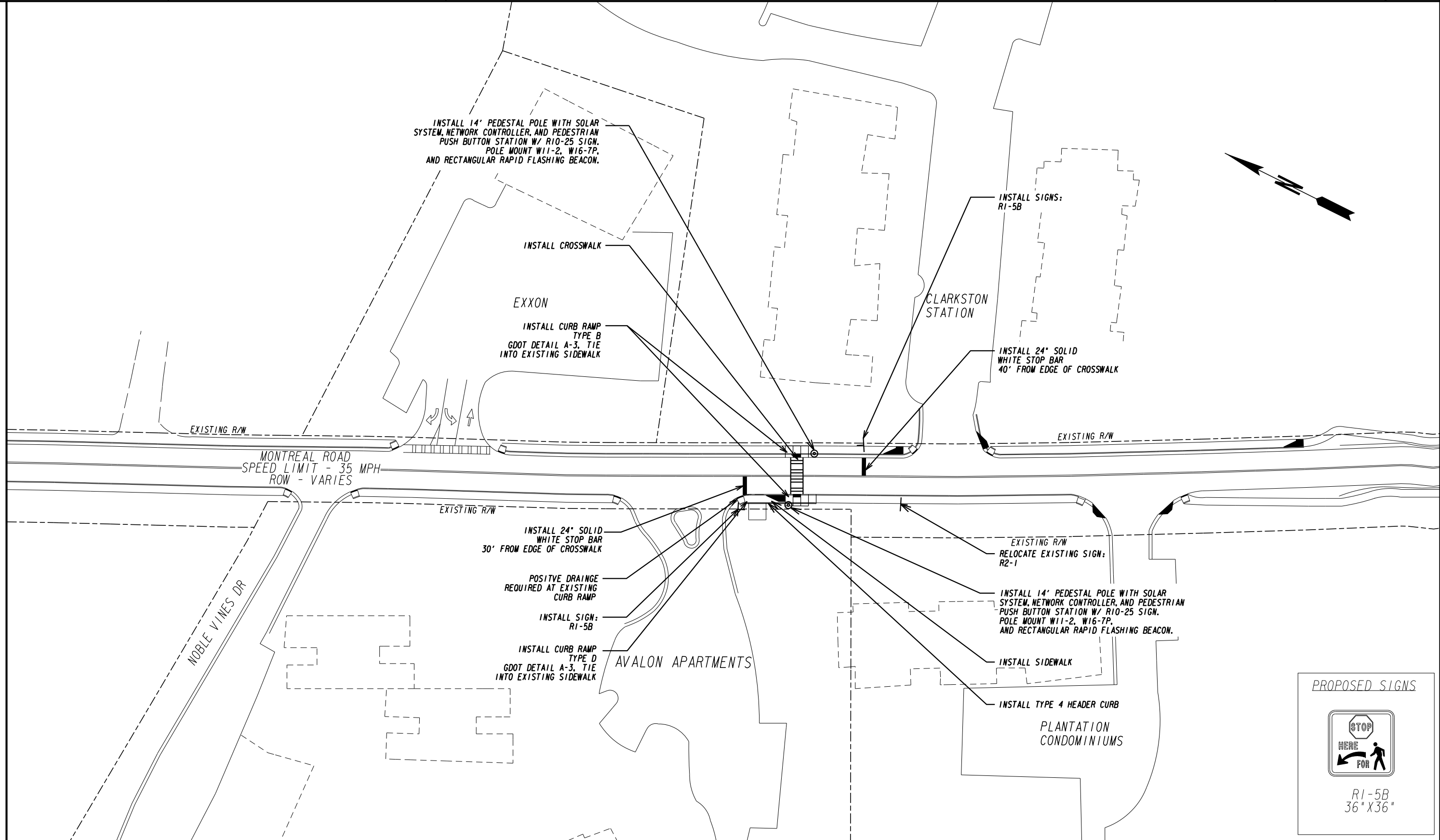
REVISION DATES

NO.	DATE	DESCRIPTION

SIGNAL PLANS

RRFB INSTALLATION - EXISTING CONDITIONS
1086 MONTREAL ROAD

CHECKED:	DATE:	DRAWING No.
		27-0003
BACKCHECKED:	DATE:	
CORRECTED:	DATE:	
VERIFIED:	DATE:	

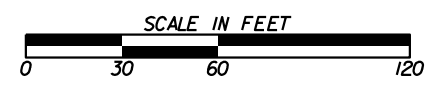


PROPOSED SIGNS

RI-5B
36" X 36"

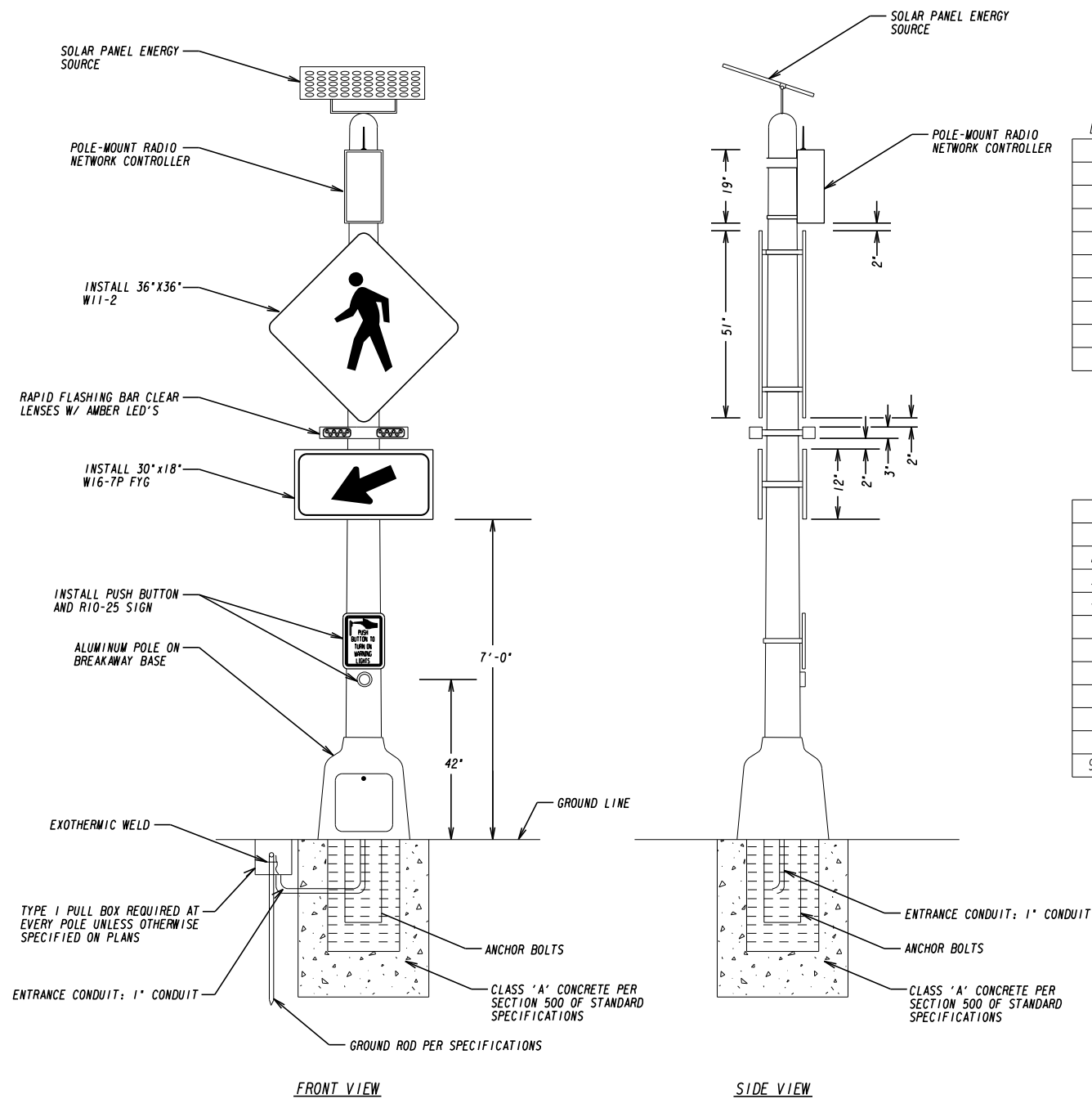
CALYX
ENGINEERS + CONSULTANTS

1255 CANTON STREET
SUITE G, ROSWELL, GA 30075
phone: 678.461.3511
CALYXengineers.com
GA License No. PEF003715



REVISION DATES		DATE	

SIGNAL PLANS		DRAWING No.	
RRFB INSTALLATION - PROPOSED CONDITIONS			
1086 MONTREAL ROAD			
CHECKED:		DATE:	
BACKCHECKED:		DATE:	
CORRECTED:		DATE:	
VERIFIED:		DATE:	
			27-0004



DOUBLE-SIDED RECTANGULAR RAPID FLASHING BEACON SYSTEM
PEDESTRIAN PEDESTAL INSTALLATION

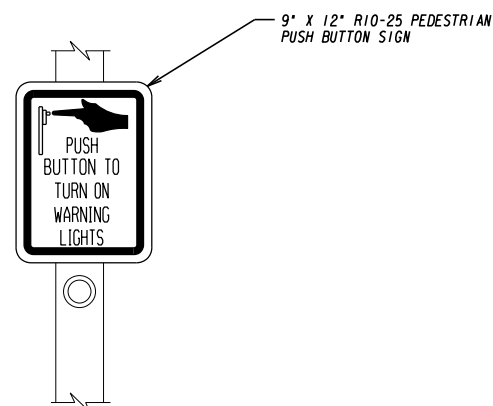
LIST OF MATERIALS - RECTANGULAR RAPID FLASHING BEACON NO. 1

LIST OF MATERIALS IS FOR INFORMATION PURPOSES ONLY. THE CONTRACTOR SHALL FIELD VERIFY ALL MATERIALS AND QUANTITIES REQUIRED FOR INSTALLATION.

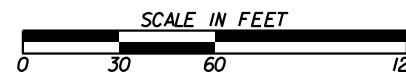
MATERIALS	UNIT	QUANTITY
14' PEDESTAL POLE WITH BREAKAWAY BASE (BLACK POWDER COAT FINISH)	EA	2
PEDESTRIAN PUSH BUTTON STATIONS, W/ BUTTONS AND SIGNS		
1. 9"x12" R10-25	EA	2
PEDESTRIAN PUSH BUTTON STATION ADAPTERS (ONLY)	EA	2
PEDESTRIAN POLE MOUNTED RAPID FLASHING BAR	EA	4
PEDESTRIAN POLE MOUNTED WIRELESS RADIO NETWORK CONTROLLER	EA	2
PEDESTRIAN POLE MOUNTED SOLAR PANEL ENERGY SOURCE	EA	2
MISC MATL TO COMPLETE INSTALLATION	LUMP SUM	1

PAY ITEMS

ITEM NO.	DESCRIPTION	UNIT	QUANTITY
150-1000	TRAFFIC CONTROL	LUMP SUM	1
210-0100	GRADING COMPLETE	LUMP SUM	1
310-1101	GR AGGR BASE CRS, INCL MATL	TN	7
441-0104	CONC SIDEWALK, 4 IN	SY	31
441-5004	CONCRETE HEADER CURB, 10 IN, TP 4	LF	47
611-5551	RESET SIGN (INCL. POST)	EA	1
636-1033	HIGHWAY SIGNS, TP 1 MATL, REFL SHEETING, TP 9	SF	1.5
636-1036	HIGHWAY SIGNS, TP 1 MATL, REFL SHEETING, TP 11	SF	51
653-1704	THERMOPLASTIC SOLID TRAF STRIPE, 24 IN, WHITE	LF	56
653-1804	THERMOPLASTIC SOLID TRAF STRIPE, 8 IN, WHITE	LF	112
999-3800A	RECTANGULAR RAPID BEACON ASSEMBLY INSTALLATION NO. 1	LUMP SUM	1



1255 CANTON STREET
SUITE G, ROSWELL, GA 30075
phone: 678.461.3511
CALYXengineers.com
GA License No. PEF003715



REVISION DATES

SIGNAL PLANS
RRFB INSTALLATION - DETAIL
1086 MONTREAL ROAD

CHECKED:	DATE:	DRAWING No.
BACKCHECKED:	DATE:	27-0005
CORRECTED:	DATE:	
VERIFIED:	DATE:	