



School Road Safety Audit

Indian Creek Elementary School, Atlanta Area School of the Deaf,
and Clarkston High School

DeKalb County & City of Clarkston, GA

Prepared for the Georgia Department of Transportation

Fieldwork Completed: March 2019

Report Finalized: April 2020



TABLE OF CONTENTS

1.	Introduction	1
1.1	Safe Routes to Schools Overview	3
1.2	What is a School Road Safety Audit?	4
1.2.1	Purpose	4
1.2.2	Process	4
2.	Study Area	5
2.1	Area Characteristics	5
2.2	School Profiles	5
2.2.1	Enrollment	5
2.2.2	Walking and Bicycling Distances	6
2.3	School RSA Study Corridors	12
2.4	Existing Conditions of Study Corridor Segments	12
2.5	Characteristics of Key Intersections	13
3.	Recent and Pending Projects	14
3.1	Recent Projects	14
3.2	Pending Projects	14
4.	Crash Data	14
4.1	Summary of Crashes	14
4.1.1	Common Locations of Crashes	15
5.	Findings and Recommendations	18
5.1	Area-wide Findings	18
5.2	N. Indian Creek Drive	21
5.2.1	Corridor: N. Indian Creek Drive	21
5.2.2	Intersection: N. Indian Creek Drive and E. Ponce De Leon Ave	21
5.2.3	Intersection: N. Indian Creek Drive and Church Street	22
5.2.4	Corridor: N. Indian Creek Drive between Church Street & Rowland Street	22
5.2.5	Intersection: N. Indian Creek Drive and Rowland Street	23
5.2.6	Corridor: N. Indian Creek Drive between Rowland Street & Rogers Street	23
5.2.7	Intersection: N. Indian Creek Drive and Rogers Street	24
5.2.8	Corridor: N. Indian Creek Drive between Rogers Street and Jackson Drive	25
5.2.9	Intersection: N. Indian Creek Drive and Jackson Drive	25
5.2.10	Corridor: N. Indian Creek Drive between Jackson Drive and Debelle Street	26
5.2.11	Intersection: N. Indian Creek Drive and Debelle Street	27

5.2.12	Corridor: N. Indian Creek Drive between Debelle St and Jamieson Place	28
5.2.13	Intersection: N. Indian Creek Drive & Jamieson Place	28
5.2.14	Corridor: N. Indian Creek Drive between Jamieson Place and The Lakes at Indian Creek Entrance	28
5.2.15	Intersection: N. Indian Creek Drive and The Lakes at Indian Creek Entrance.....	30
5.2.16	Corridor: N. Indian Creek Drive between The Lakes at Indian Creek Entrance and Indian Creek Way	31
5.2.17	Intersection: N. Indian Creek Drive and Indian Creek Way.....	32
5.3	Indian Creek Way	33
5.3.1	Intersection: N. Indian Creek Drive & Memorial College Avenue.....	34
5.3.2	Corridor: N. Indian Creek Drive between Memorial College Avenue and Indian Creek Lane	35
5.3.3	Intersection: N. Indian Creek Drive & Indian Creek Lane.....	35
5.3.4	Intersection: N. Indian Creek Drive & Clarkston High School, Northern Entrance	35
5.3.5	Corridor: N. Indian Creek Drive between Clarkston High School, Northern Entrance and Southern Entrance / Georgia State Exit Driveway	36
5.3.6	Corridor: N. Indian Creek Drive between Georgia State University Clarkston Campus Exit Driveway and Milligan Drive	37
5.3.7	Corridor: N. Indian Creek Drive between Milligan Drive and SR 10 / Memorial.....	38
5.3.8	Corridor: Rockbridge Road, along EB side of Rockbridge from N. Indian Creek Drive to SR 10 / Memorial	39
5.3.9	Corridor: Rockbridge Road, along WB side of Rockbridge from SR 10 to N. Indian Creek Drive.....	39
5.3.10	Intersection: N. Indian Creek Drive Ext & Rockbridge Road SW	39
5.3.11	Intersection: N. Indian Creek Drive & N Decatur Rd / Rockbridge Road SW	40
5.3.12	Intersection: N. Indian Creek Drive & SR 10 / Memorial Drive	40
5.4	Potential Projects	41
5.4.1	Project #1: Pedestrian Improvements at Northern Entrance of Indian Creek Elementary School.....	41
5.4.2	Project #2: Sidewalk Reconstruction.....	42
6.	Conclusions	43
	Appendix A School Prioritization Methodology	44
	Appendix B School RSA Invite/Attendees	45
	Appendix C Crash Analysis Data	46
	Appendix D School RSA Maps	55
	Appendix E School RSA Recommendations	61
	Appendix F School RSA Prioritized Recommendations	69
	Appendix G Safe Routes to School: Road Safety Survey Sample	78

TABLE OF FIGURES

Figure 1. Study Area for Indian Creek Elementary, Atlanta Area School for the Deaf, and Clarkston High School..... 2

Figure 2. The School Road Safety Audit Process 4

Figure 3. Attendance boundary for Indian Creek Elementary School..... 7

Figure 4. Walkshed for Indian Creek Elementary School 8

Figure 5. Walkshed for Atlanta Area School for the Deaf 9

Figure 6. Attendance Boundary for Clarkston High School..... 10

Figure 7. Walkshed for Clarkston High School 11

Figure 8. Crash Locations Heat Map 16

Figure 9. Pedestrian and Bicyclist Crashes 17

TABLE OF TABLES

Table 1. Indian Creek Elementary School enrollment and demographics, 2018..... 5

Table 2. Clarkston High School enrollment by grade, 2018 6

Table 3. Study Corridor Segment Characteristics..... 12

Table 4. Study Corridor Segment Bicycle/Pedestrian Facilities 12

Table 5. Key Intersection Characteristics, confirmed in the field 13

Table 6. Indian Creek Study Area Crash Data..... 15

Table 7. Legend for Recommendations Ratings..... 18

1. Introduction

This report was created in accordance with the FHWA School Road Safety Audit guidelines and combines findings from crash data analysis, local input, and field observations to form recommendations for improvements in safety along the corridor. The recommendations have been developed to address concerns for all types of road users. This audit breaks out the safety recommendations by safety impact, level of effort, time, and cost to help guide the implementation process.

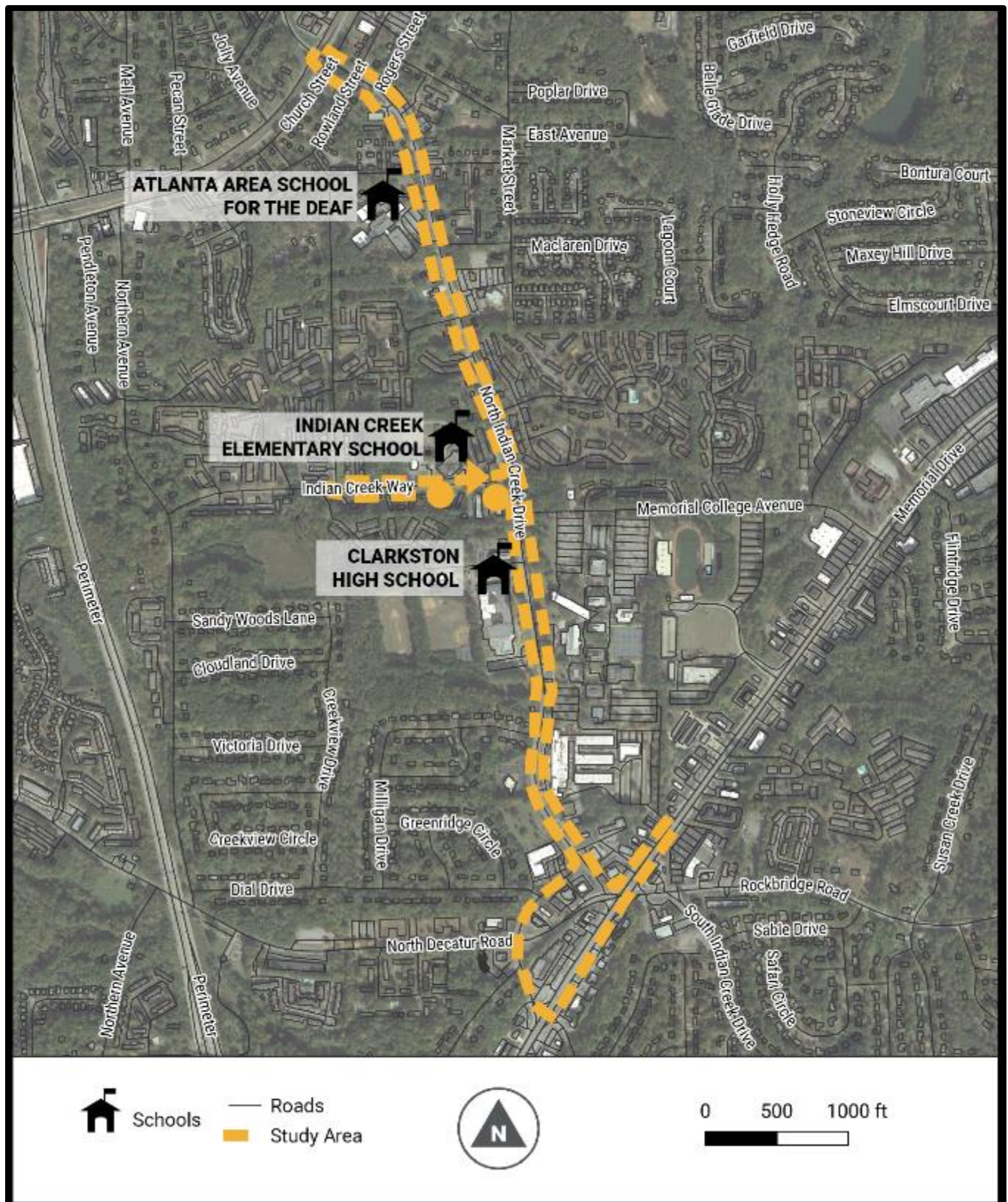
A School Road Safety Audit ("School RSA") for Indian Creek Elementary School, Atlanta Area School for the Deaf, and Clarkston High School in Clarkston, Georgia, was conducted on **March 20, 2019** by the Georgia Department of Transportation (GDOT), DeKalb County Department of Engineering, AECOM, and Toole Design Group. The proximity of the three schools allowed the School RSA to cover a continuous study area of the three corridors shown in **Figure 1**. The audit bounds were along N. Indian Creek Drive from E. Ponce de Leon Boulevard to SR 10/Memorial Drive, SR 10/Memorial Drive from N. Indian Creek Drive to Rockbridge Road SW, and Rockbridge Road SW from N. Indian Creek Drive to SR 10/Memorial Drive. The study area is within DeKalb County, Georgia.

Most of the recommendations from this School RSA describe concerns such as lighting, sight distance, speeding, walkability, channelization, and signage. Many of these concerns could be met with short-term, intermediate, and long-term solutions, which would allow maintaining agencies the opportunity to prioritize and coordinate implementing safety improvements as appropriate.

Several short-term measures include reviewing signage, improving lighting, and repairing pavement markers. Long-term recommendations include improving channelization as well as installing continuous pedestrian facilities along example roadway. The report also reviews safety concerns for each major intersection along the corridor and provides specific improvements.

This School RSA report will assist GDOT and local city and county governments in proactively organizing goals for future safety improvements. Through implementing the recommendations in this report and prioritizing user safety in future projects along the corridor, roads can be made safer for all users, especially students walking and bicycling to school. The SRTS team suggests that the recommendations stated in this report be implemented as resources become available. The responsible agency(s) should document any decisions to modify or eliminate recommendations based on engineering judgement or lack of feasibility.

Figure 1. Study Area for Indian Creek Elementary, Atlanta Area School for the Deaf, and Clarkston High School



1.1 Safe Routes to Schools Overview

The federal SRTS program was established in 2005 under the Safe, Accountable, Flexible, Efficient, Transportation Equity Act (SAFETEA-LU), and later re-grouped with other bicycle and pedestrian programs under “Transportation Alternatives Program” with the passing of Moving Ahead for Progress in the 21st Century Act (MAP-21) in 2012. In December 2015, the Fixing America’s Surface Transportation Act (the FAST Act) renamed the Transportation Alternatives Program as the Surface Transportation Block Grant Program Set-Aside. The Safe Routes to School program in Georgia is funded with federal Highway Safety Improvement Program (HSIP) dollars. The State of Georgia does provide some matching funds for a portion of the federal HSIP dollars. No “stand alone” state dollars are currently being used for the program.

The core purpose of SRTS programs has always been the following:

- To facilitate the planning, development, and implementation of projects and activities that will **improve safety** and reduce traffic, fuel consumption, and air pollution near schools.
- To make bicycling and walking to school a **safer** and more appealing transportation alternative, thereby encouraging a healthy and active lifestyle from an early age.
- To **enable and encourage** children, including those with disabilities, to walk and bicycle to school safely.

In keeping with best practices, the Georgia SRTS program emphasizes a comprehensive approach to SRTS, being sure to address the “Six E’s”: Engineering, Education, Enforcement, Encouragement, Evaluation and Equity (see sidebar).

In fall 2018, GDOT selected schools to receive a School Road Safety Audit (School RSA) through the Georgia SRTS Program. This report presents the results of a School RSA focused on three schools: Indian Creek Elementary, Atlanta Area School for the Deaf, and Clarkston High School.

The Six E’s:

Engineering strategies create safer environments for walking and bicycling to school through improvements to the infrastructure surrounding schools. These improvements focus on reducing motor vehicle speeds and conflicts with pedestrians and bicyclists, and establishing safer and fully accessible crossings, walkways, trails, and bikeways.

Education programs target children, parents, caregivers and neighbors, teaching how to walk and bicycle safely and informing drivers on how to drive more safely around pedestrians and bicyclists. Education programs can also incorporate health and environment messages.

Enforcement strategies increase the safety of children bicycling and walking to school by helping to change unsafe behaviors of drivers, as well as pedestrians and bicyclists. A community approach to enforcement involves students, parents or caregivers, school personnel, crossing guards, and law enforcement officers.

Encouragement activities promote walking and bicycling to school to children, parents and community members. Events such as Walk to School Day, contests such as a Frequent Walker/Bicyclist challenge, or on-going programs such as a Walking School Bus or Bicycle Train can promote and encourage walking and bicycling as a popular way to get to school.

Evaluation is an important component of SRTS programs that can be incorporated into each of the other E’s. Collecting information before and after program activities or projects are implemented allow communities to track progress and outcomes and provide information to guide program development.

Equity is an important goal of the SRTS program, in that improvements and programs should benefit all demographic groups. Safe, healthy, and fair outcomes are provided for students in disadvantaged groups such as those with limited opportunities or disabilities.

--Excerpted from “Safe Routes to School: A Transportation Legacy”, the report of the National Safe Routes to School Task Force

1.2 What is a School Road Safety Audit?

1.2.1 Purpose

A School RSA is a **formal safety performance examination** of a roadway by an independent audit team. The purpose of a School RSA is to provide an in-depth understanding of crash causes and countermeasures prior to design or construction. The School RSA allows community members and agencies to **proactively engage in a conversation about road safety** with the leadership of an independent party. This report will qualitatively estimate and report on potential road safety issues and identify opportunities for improvements in safety specifically for students traveling to school by walking or bicycling.

1.2.2 Process

A School RSA typically follows an eight-step process as seen below in **Figure 2**.

Figure 2. The School Road Safety Audit Process



The selected schools were identified as locations for a School RSA due to factors such as high volumes of nearby traffic, crash history near the school, areas with a relatively larger school-age population, and socioeconomic factors. Detailed methodology regarding the data-driven approach to selecting schools for a School RSA is included in **Appendix A**.

Selecting a School RSA team requires finding an independent group of qualified professionals and local citizens. The Georgia Department of Transportation (GDOT) selected AECOM and Toole Design to lead the School RSA team in identifying practices and preparing recommendations to improve safety at each selected school. While there is an opportunity to receive public involvement through surveys and meetings, the School RSA team decided to conduct the School RSA with law enforcement officers and GDOT personnel. GDOT personnel were represented from the central safety office out of Atlanta and GDOT District offices appropriate to each school.

Prior to the fieldwork, a survey was offered to each school before the School RSA to identify problems known to stakeholders such as teachers and parents. The survey is included in **Appendix H**.

Indian Creek Elementary School, Atlanta Area School for the Deaf, and Clarkston High School are located within three-quarter -mile of each other, and a School RSA was conducted along walking and bicycling routes near all three schools. The following report will cover the existing conditions of the study area, findings and observations from the field review, and recommendations to improve safety along the corridor.

2. Study Area

A field review was performed on **March 20, 2019** for Indian Creek Elementary School, Atlanta Area School for the Deaf, and Clarkston High School by an independent group of traffic engineers, planners, school staff, police officers, and local citizens. The full list of participants in the School RSA is included in **Appendix B**. The goal of this field review was to complete a School Road Safety Audit (School RSA) of walking and bicycling routes near Indian Creek Elementary School, Atlanta Area School for the Deaf, and Clarkston High School as well as to proactively address safety concerns. This section describes the study area characteristics, school enrollment, walking distances, and existing conditions of study corridors chosen for the School RSA.

2.1 Area Characteristics

Indian Creek Elementary School, Atlanta Area School for the Deaf, and Clarkston High School are part of the DeKalb County School District in DeKalb county, Georgia. In 2010, the population of DeKalb County was 692,000 and is estimated at 757,000 for 2018. For this study, the study follows major collector N. Indian Creek Drive from its intersection with E. Ponce de Leon Avenue to its intersection with SR 10/Memorial Drive. The area suburban in nature and consists of a mix of residence, public centers, schools, and universities. The three schools are each located less than a mile from minor arterial E. Ponce de Leon Avenue in the north and principal arterial SR10/Memorial Drive in the south.

Clarkston has experienced an influx of international refugees who have chosen to resettle here. Many of the residential areas along N. Indian Creek Drive are home to a diverse population that walk, bike, or use public transportation as their primary modes of transportation. In discussions with the principal at Indian Creek Elementary School, it was noted that of the roughly 1,000 kids attending the school, only 70 ride the bus, approximately 100 are transported by personal vehicle, and the remainder walk or bike home. As such approximately 800 students walk or bike to and from N. Indian Creek Elementary School daily.

2.2 School Profiles

2.2.1 Enrollment

The schools include grades Pre-Kindergarten (Pre-K) through 12, with a total enrollment of approximately 2,590 students. A breakout of students by grade and other information provided by the Georgia Department of Education is in the following tables. Current student information for the Atlanta Area School for the Deaf is not available. Therefore, the number of students (197) is based on past years' information.

Table 1. Indian Creek Elementary School enrollment and demographics, 2018

Metric	Grade	Students	Percent (%)
Enrollment by Grade	PK	44	4%
	KG	157	16%
	1	184	19%
	2	160	16%
	3	155	16%
	4	150	15%
	5	140	14%
Likely to Walk or Bike to School*	Total	891	90%
Free/Reduced Lunch	Total	941	>95%
Total Enrollment	Total	990	100.0%

*Students likely to walk based on grade-level, field observation, School RSA interviews, and socioeconomic factors

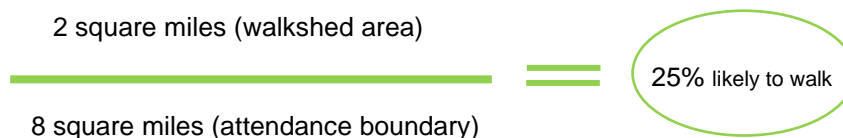
Table 2. Clarkston High School enrollment by grade, 2018

Metric	Grade	Students	Percent (%)
Enrollment by Grade	9	464	33%
	10	354	25%
	11	267	19%
	12	318	23%
Likely to Walk or Bike to School*	Total	982	70%
Free/Reduced Lunch	Total	1332	>95%
Total Enrollment	Total	1403	100.0%

*Students likely to walk due to grade-level, field observation, and socioeconomic factors

2.2.2 Walking and Bicycling Distances

This section provides context for why certain routes were chosen for the School RSA, based on logical routes to school by currently enrolled students. According to school administration, students residing within a half-mile walk of the school are within the walk zone (also called the walkshed) and are not provided with bus transportation to and from school. Since student address data was not available, a proxy was used to determine the number of students covered in each walkshed and the number of students likely to walk or bicycle: the area of each school's walkshed as a percentage of the attendance boundary. For example,



Indian Creek Elementary School

Located in central DeKalb County, the attendance boundary of Indian Creek Elementary School is bounded to the west by I-285 (The Perimeter), to the north by E. Ponce de Leon Avenue, and to the south by SR 10/Memorial Drive and Dial Drive. Through a desktop survey, the area within the school attendance boundary has been determined to be mostly low-density residential and forested in nature. The area within a half-mile walk of Indian Creek Elementary School is high-density residential in nature. The remainder of the school attendance boundary is within a one-mile walking distance from the school, except for the low-residential area along Creekview Drive in the southwest area of the school attendance boundary. Based on these land area comparisons, approximately **90% of the student population** is considered 'likely' to walk or bike to school.

Atlanta Area School for the Deaf

The Atlanta Area School for the Deaf is a public school for students ages 3 through 21. The school is available to all students deaf or hard-of-hearing within the metropolitan Atlanta area. Therefore, the school attendance boundary encompasses all the counties within metropolitan Atlanta. As the school is estimated to have less than 200 students traveling from across the metropolitan area, very few to no students are anticipated to be within walking or biking distance of the school.

Clarkston High School

The attendance boundary of Clarkston High School extends eastward from I-285 (The Perimeter) to South Harrison Road. Based on the attendance boundary map in Figure 6, the half-mile and one-mile walkshed represent approximately 20% of the entire attendance boundary. Located adjacent to Indian Creek Elementary School, the land use around Clarkston High School is similar to that of the elementary school. A portion of the one-mile walkshed lies on the opposite side of SR 10/Memorial Drive from Clarkston High School. As a major arterial roadway with long pedestrian crossing distances, students are not anticipated to cross SR 10/Memorial Drive to walk or bike to school. Based on this assumption, approximately 70% of the student population is considered 'likely' to walk or bike to school.

Figure 3. Attendance boundary for Indian Creek Elementary School



Figure 4. Walkshed for Indian Creek Elementary School

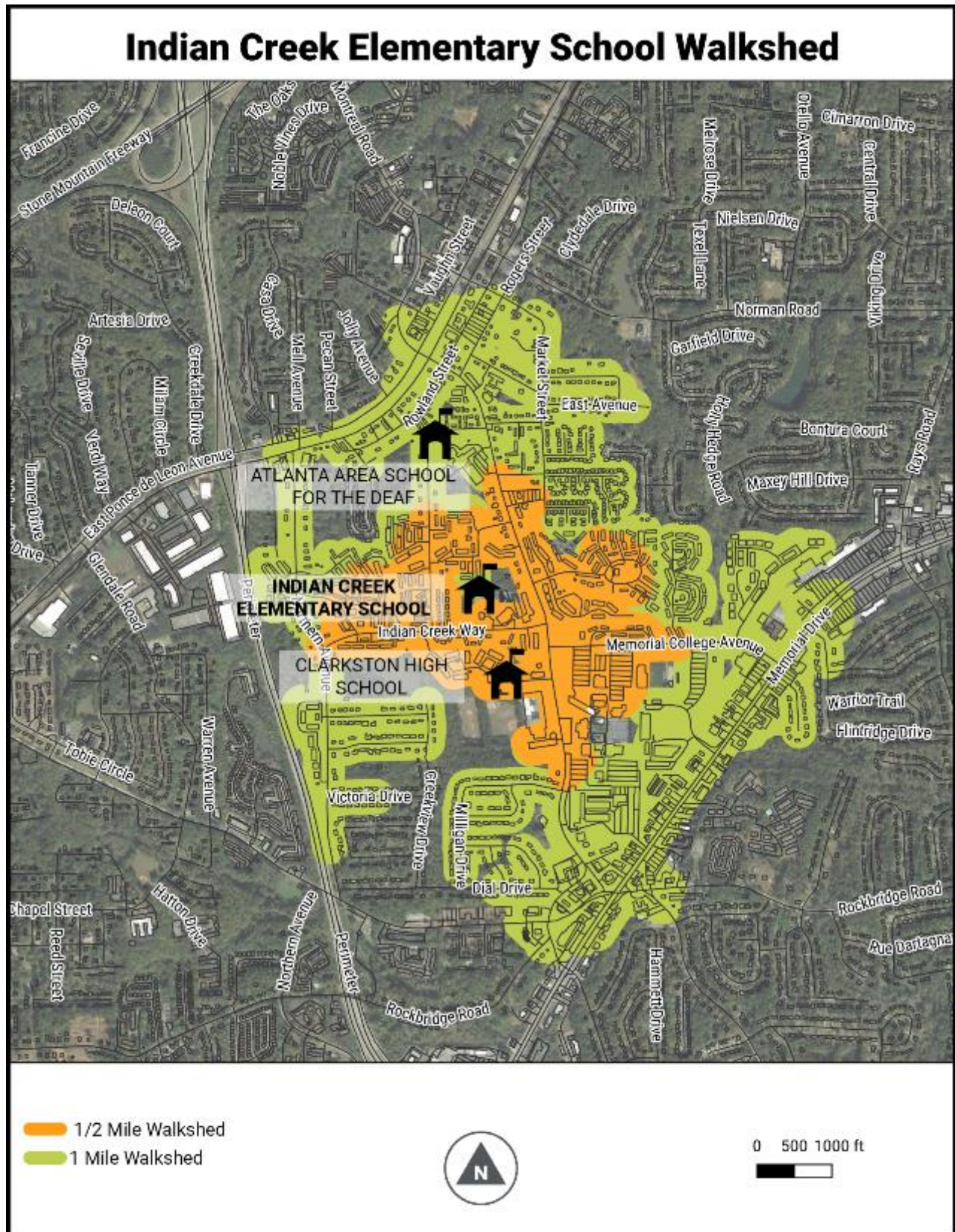
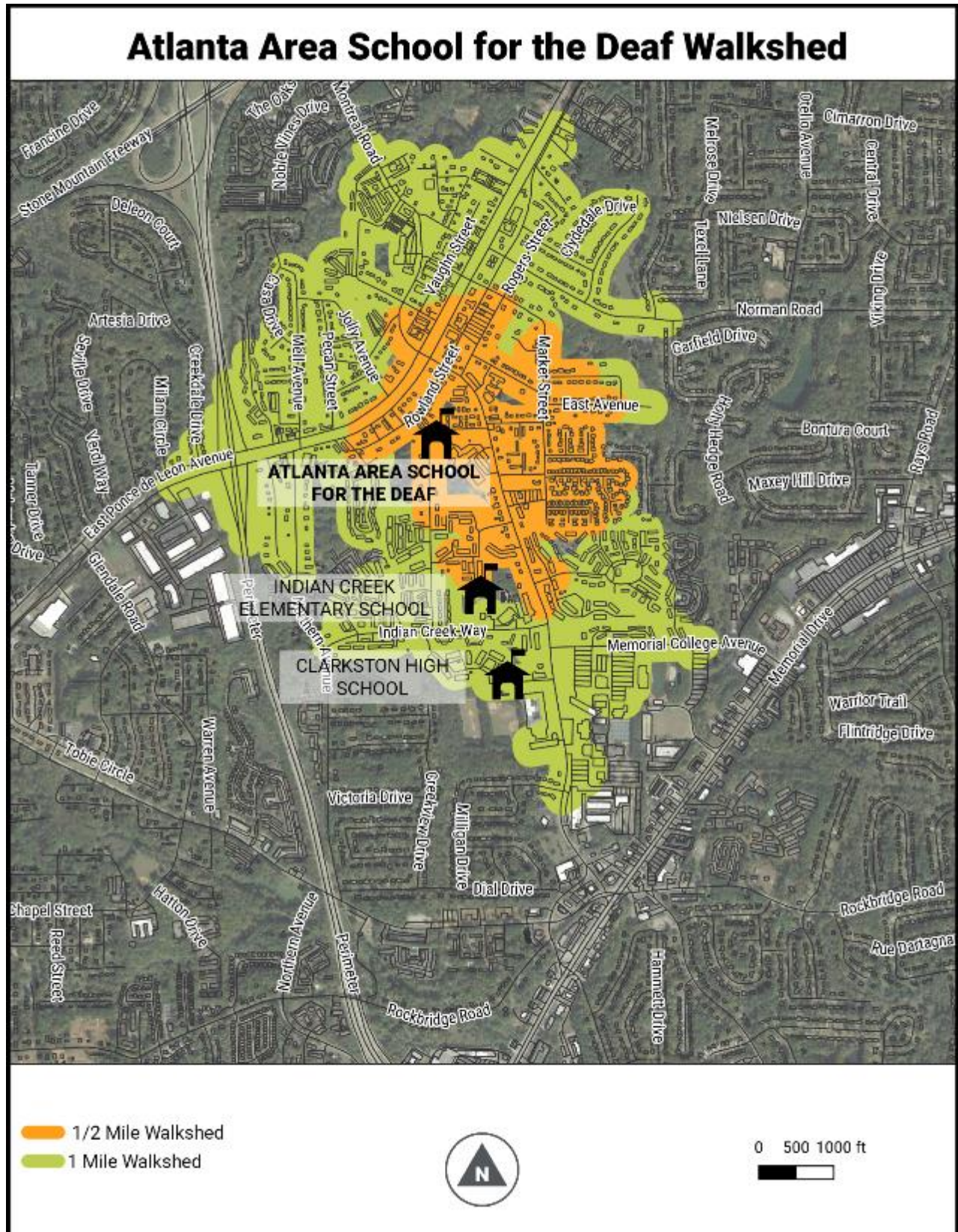


Figure 5. Walkshed for Atlanta Area School for the Deaf



The Atlanta Area School for the Deaf accepts students from across the metropolitan area. The actual student enrollment boundary could not be illustrated on a map of this scale.

Figure 6. Attendance Boundary for Clarkston High School

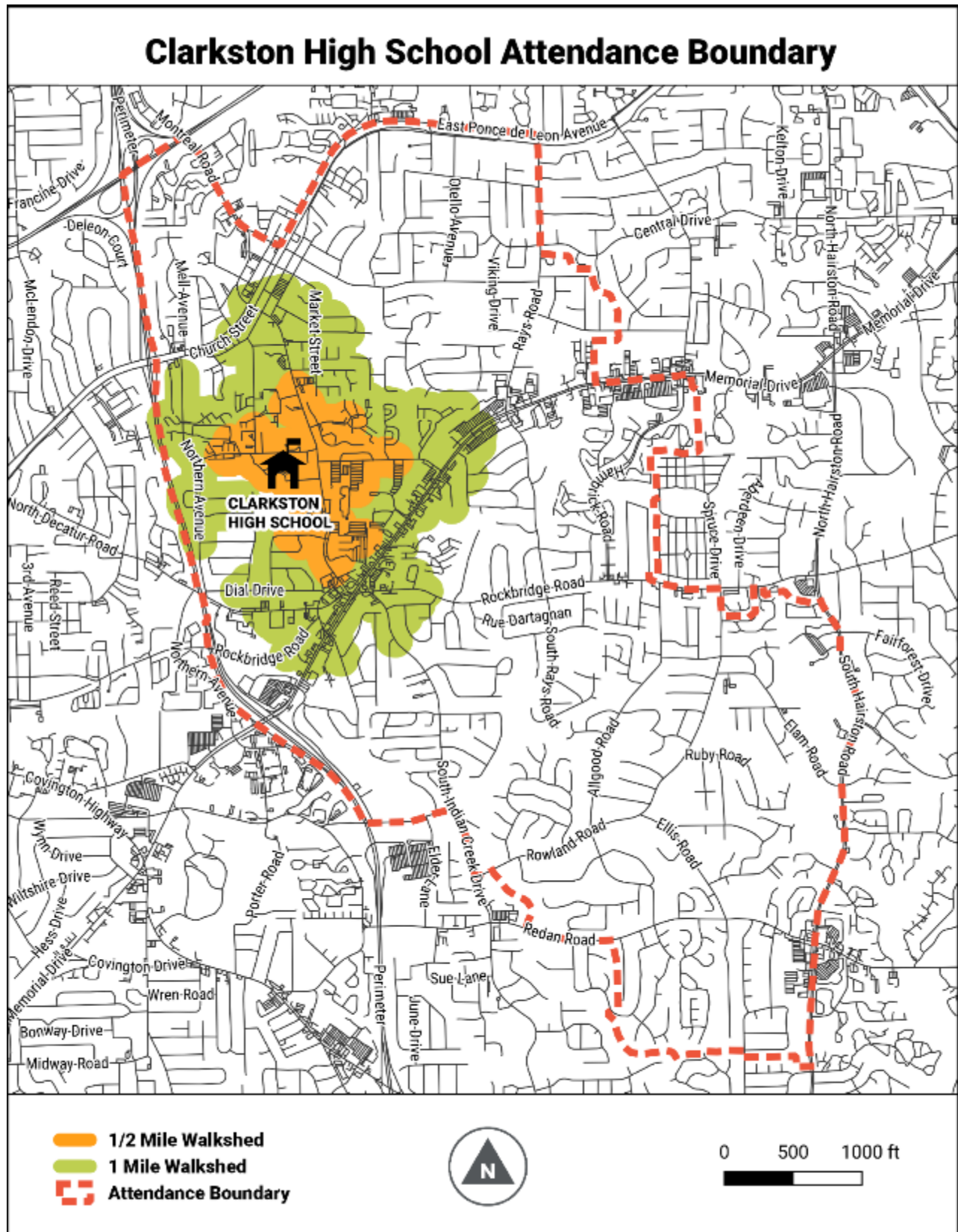


Figure 7. Walkshed for Clarkston High School



2.3 School RSA Study Corridors

Critical walking and bicycling routes were identified for Indian Creek Elementary School, Atlanta Area School for the Deaf, and Clarkston High School by identifying a half-mile walk boundary for each school. The roadways connecting the residential areas to the schools became the focus of the school road safety audit. The study corridors include portions of roads accessing the schools including **N. Indian Creek Drive, SR 10/Memorial Drive, Rockbridge Road, and Indian Creek Way.**

2.4 Existing Conditions of Study Corridor Segments

The characteristics of the key walking and bicycling routes near Indian Creek Elementary School, Atlanta Area School for the Deaf, and Clarkston High are summarized in **Tables 3 and 4.** N. Indian Creek Drive is the most heavily traveled route for pedestrians and bicyclists in the study area and is posted at the 35 mph. Posted speeds in the study area range from 25 mph to 40 mph. Sidewalks are present but often disconnected throughout the study area. Bicycle facilities, with outdated striped pavement markings, are within the study area along N. Indian Creek Drive.

Table 3. Study Corridor Segment Characteristics

Route	Roadway Classification	2016 Traffic Volume	Posted Speed
N. Indian Creek Drive	Major Collector	17,000	35 mph
SR 10/Memorial Drive	Principal Arterial	11,000	45 mph
E. Ponce de Leon Ave.	Minor Arterial	10,000	35 mph
Rockbridge Rd.	Minor Arterial	Unavailable	40 mph
Indian Creek Way	Local Road	Unavailable	35 mph

Table 4. Study Corridor Segment Bicycle/Pedestrian Facilities

Route	Sidewalks	Mid-Block Crossings	Bicycle Facilities	Signage
N. Indian Creek Drive	Present, Disconnected	Present	Present	School Zone
SR 10/Memorial Drive	Present	Not Present	Not Present	N/A
E. Ponce de Leon Ave.	Present	Present	Not Present	N/A
Rockbridge Rd.	Present	Not Present	Not Present	N/A
Indian Creek Way	Present, Disconnected	Not Present	Not Present	School Zone

2.5 Characteristics of Key Intersections

Several signal-controlled intersections are in the study area. All other intersections are two-way stop controlled. Four of the signal-controlled intersections were evaluated for sidewalk, crosswalk and sidewalk ramps. The figure on the right provides a guide to the location of sidewalks, crosswalks and ramps at each intersection. Sidewalks can be located at a total of eight locations on the clock diagram: 1, 2, 4, 5, 7, 8, 10, or 11. Crosswalks can be located at a total of four locations on the clock diagram: 3, 6, 9, or 12, which refer to the vehicle way crossed. Ramps can be located at a total of eight locations on the clock diagram: 1, 2, 4, 5, 7, 8, 10 or 11; which refer to the ramp facing towards that clock number. As an example, a pedestrian walking northbound on the eastern side of the diagram would use sidewalk section 5, then ramp 5, then crosswalk 3, then ramp 1, and finally sidewalk section 1.

**Clock Reference
Intersection Diagram**

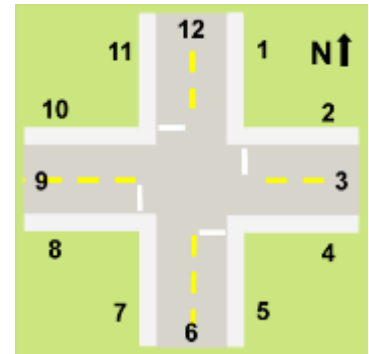


Table 5. Key Intersection Characteristics, confirmed in the field

Intersection	Control	Sidewalks Present	Crosswalk Locations	Ramp Locations
N. Indian Creek Drive and Church Street	Signal	1, 4, 5, 7, 8, 11	3, 6, 9	2, 4, 7, 11
N. Indian Creek Drive and Indian Creek Way	Signal	1, 5, 7, 8, 10, 11	9, 12	1, 8, 10, 11
N. Indian Creek Drive and Memorial College Avenue	Signal	1, 2, 4, 5, 7, 11	3, 6, 12	1, 2, 4, 7, 10
N. Indian Creek Drive and Rockbridge Rd SW (near QuikTrip)	Signal	1, 8, 10, 11	3, 6, 9, 12	1, 2, 4, 5, 7, 8, 10, 11
Rockbridge Rd SW and SR 10/Memorial Drive	Signal	1, 4, 5, 7, 10, 11	3, 6, 9, 12	1, 2, 4, 5, 7, 8, 10, 11

3. Recent and Pending Projects

Recent and pending projects were researched via GDOT's GeoPI website:

www.dot.ga.gov/BS/Projects/ProjectSearch) as well as in discussions with District 7 GDOT personnel.

3.1 Recent Projects

One recent project is under construction currently in the study corridor according to GDOT's GeoPI website: the Streetscape – City Center in Clarkston project. This project is listed as P.I. No. 0007613, project number CSHPP-0007-00(613). The Clarkston City Center Streetscape project proposes to provide streetscape enhancements along portions of E. Ponce De Leon Avenue, Market Street, Rowland Street and Norman Road. Enhancements include sidewalks, curbing, fencing, street-tree planning, storm water improvements, signage, signals, mast arms, decorative lighting, road repaving, road resurfacings, railroad crossing enhancements and operational improvements.

3.2 Pending Projects

There are no further pending projects listed in the GDOT GeoPI database for this study area.

4. Crash Data

4.1 Summary of Crashes

Crash data was downloaded from the GDOT Georgia Electronic Accident Reporting System (GEARS) database for all crashes within a half-mile circular area of each school, occurring between January 20, 2014 and December 31, 2016 on weekdays between 6:00 AM and 6:00 PM. During this period, **a total of 419 crashes** were recorded. **Table 6** below summarizes the crash data by collision type and year.

Out of 419 crashes, 184 were rear end crashes, 147 were angle crashes, 50 were sideswipe crashes, and eight were head on crashes. The remaining 30 crashes did not involve another vehicle. Reports indicated that there were **129 injuries** and **no fatalities** during the three-year period of given data. The crash data shows that there was an average of **140 crashes per year** between 2014 and 2016.

Of the collisions that occurred, **44% were rear-end crashes**, **35% involved vehicles colliding at an angle**, and **9% were sideswipe collisions** between vehicles traveling the same direction. **30% of all crashes involved non-fatal injuries**, and there were **no fatalities** during the study period.

More recent data indicates that there was a hit and run accident at the entrance to Indian Creek Elementary School that resulted in a pedestrian fatality of a four-year-old child walking with family members to school in October 2017.

Nearly all the crashes occurred on the roadway as a collision between motor vehicles, while five of the crashes queried involved a pedestrian-vehicular interaction. The factors listed for these crashes include "Failed to Yield" and "Other."

Table 6. Indian Creek Study Area Crash Data

Collision Type	2014	2015	2016	Total
Angle	44	55	51	147
Head On	4	3	1	8
Not A Collision with Motor Vehicle	13	9	8	30
Rear End	58	69	57	184
Sideswipe-Opposite Direction	6	1	4	11
Sideswipe-Same Direction	11	14	14	39
Total Crashes	133	151	135	419
Total Non-Fatal Injuries	42	49	38	129
Total Fatalities	0	0	0	0
Average Crashes Per Year	32%	36%	32%	100%

Source: GDOT GEARS database, Data from 2014-2016

4.1.1 Common Locations of Crashes

While it is important to focus on the entire corridor during this School RSA, **most of the reported crashes occurred at five areas:**

- N. Indian Creek Drive and Indian Creek Way
- N. Indian Creek Drive and Memorial College Avenue
- N. Indian Creek Drive and Debelle St.
- N Indian Creek Drive and Church Street/E. Ponce de Leon Avenue
- SR 10/Memorial Drive and commercial district north of Rockbridge Road

While many crash types were evenly distributed throughout the study area, certain types of crashes appeared to occur more frequently at specific intersections. A heat map of crashes in **Figure 8** illustrates how crashes are distributed across the study area. Angle crashes were most frequent along N. Indian Creek Drive, with a cluster along SR 10/Memorial Drive north of Rockbridge Road. Rear end crashes mirrored the distribution of angle crashes with entrances to the schools, universities, and businesses along SR 10/Memorial Drive being the most problematic intersections for this type of collision. Bicycle and pedestrian accidents were reported along N. Indian Creek Drive and at the intersection of Indian Creek Way and Northern Avenue. These crash locations correspond with local walking destinations or curves along the roadway.

A pedestrian fatality was noted during the field audit to have occurred at the midblock crossing on N. Indian Creek Drive at the entrance location for the circulatory loop for Indian Creek Elementary School. This fatality is outside of accessible dataset provided as of the drafting of this report and is not illustrated in **Figure 9**.

Figure 8. Crash Locations Heat Map



Figure 9. Pedestrian and Bicyclist Crashes



5. Findings and Recommendations

A field review was performed on **March 20, 2019** for Indian Creek Elementary School, Atlanta Area School for the Deaf, and Clarkston High School by an independent group of traffic engineers, police officers, and school officials. The full list of participants in the School RSA is included in Appendix B. The goal of this field review was to complete a School Road Safety Audit (School RSA) of walking and bicycling routes near the three schools, as well as to proactively address safety concerns.

The following findings and recommendations were recorded from the field study. The photos shown below were taken during this field study to assist in displaying the observations. The format below will include a list of findings and observations with pictures to aid what was seen in the field. Recommendations will then be displayed in a table format and will be rated by Safety Benefit, Time Frame, and Cost. **Table 6** indicates the meaning of each rating.

Findings and recommendations for each major roadway in the study area are described in sections 5.2 & 5.3. Each section begins with overall corridor findings along that roadway, then describes findings at each intersection.

Table 7. Legend for Recommendations Ratings

Safety Benefit	Time Frame	Cost
Low Minimal Impact to pedestrian safety	Short Term 1 to 6 months	Low \$0 to \$100,000
Moderate Noticeable improvement to pedestrian safety	Intermediate 6 to 24 months	Moderate \$100,000 to \$300,000
High Significant improvement to pedestrian safety	Long Term Greater than 24 months	High Greater than \$300,000

5.1 Area-wide Findings

The following deficiencies were found along the entire length of roadways in the study area.

1. **Pedestrian lighting** was insufficient throughout study area, especially at intersections.
2. **Vehicle operating speed** on all roads was an issue. While vehicle speeds were not measured, audit team members perceived vehicles operating in excess of posted speed limits.
3. There is a lack of **pedestrian staging areas at intersections** observed throughout corridor which are specified in the following recommendations.
4. The study team would like to recommend evaluating the **replacement of the center two-way left turn lane with a median** along North Indian Creek Drive.

The following recommendations have been prepared through analysis of the findings and general observations in the entire study area. The School RSA team suggests that the recommendations stated in this report be implemented as resources become available. The responsible agency(s) should document any decisions to modify or eliminate recommendations based on engineering judgement or lack of feasibility.



Lack of pedestrian staging areas were observed throughout the corridor.



Vehicles were observed to travel at high rates of speed throughout the corridor along N. Indian Creek Drive. Pedestrian median refuges (above) have been added at key intersections. Additional signage and lighting and potentially a Rectangular Rapid Flashing Beacon Assembly or Pedestrian Hybrid Beacon are recommended to improve visibility of crossing pedestrians.



Crossings at Debelle street could be improved by re-stripping the crosswalks and adding detectable warning surfaces

5.2 N. Indian Creek Drive

The audit team evaluated N. Indian Creek Drive from E. Ponce de Leon Avenue intersection to the SR 10/Memorial Drive intersection to the south, concentrating on the corridor, as well as individual intersections. The observations of the audit team are listed below. Recommendations were determined through synthesis of data received on the audit, from surveys, and from discussion from school officials.

The N. Indian Creek Drive corridor is not only home to three schools and a university, but it is surrounded by multi-family and single-family housing. The area is also home to the City of Clarkston's diverse population which includes recent refugees and first-generation residents of the United States. These residents often walk for transportation and cross N. Indian Creek Drive to reach skills and language courses at the community center or take their children to school.

5.2.1 Corridor: N. Indian Creek Drive

N. Indian Creek Drive is the primary corridor of study for this audit. From the northern limit of E. Ponce de Leon Avenue to the southern limit of SR 10/Memorial Drive, N. Indian Creek Drive is a major collector that provides a connection to I-285 while serving numerous schools, public centers, and religious institutions. The corridor has a complete network of sidewalks on both sides of the roadway in a state of fair repair. In 2015, Indian Creek Dr. transitioned from a four-lane section to a three-lane section with on-street bicycle lanes and added mid-block pedestrian crossings with median refuges at multiple locations.

The following observations were made along the corridor:

1. Vehicle speeds were not measured but appeared to be in excess of the posted speed limit.
2. Adjacent sidewalks are in a state of fair repair.
3. Pedestrian crossing volumes at N. Indian Creek Drive and The Lakes at Indian Creek is heavy, especially during the school year at arrival and dismissal times.
4. Number of gaps in sidewalk connectivity increase at the approach to SR 10/Memorial Drive.
5. Crosswalks were well-marked.

ID	Location	Recommendation	Responsible Agency	Timeframe	Safety Benefit	Cost
1	Corridor-wide	Evaluate replacement of center two-way left turn lane with a median.	City of Clarkston; DeKalb County Transportation	Long Term	High	High

5.2.2 Intersection: N. Indian Creek Drive and E. Ponce De Leon Ave

The City of Clarkston is investing in streetscape improvements at this location including resurfacing, crosswalks, new sidewalks, new decorative lighting, and more through P.I. No. 0007613, project number CSHPP-0007-00(613). Therefore, the project team only recommends the City also improve lighting for the intersection.

ID	Location	Recommendation	Responsible Agency	Timeframe	Safety Benefit	Cost
2	N. Indian Creek Drive & Ponce De Leon Avenue	Improve lighting for the intersection.	City of Clarkston	Intermediate Term	Moderate	Moderate

5.2.3 Intersection: N. Indian Creek Drive and Church Street

The City of Clarkston could refresh the signals at this intersection with support from GDOT through an application for purchase of safety equipment using HSIP funds.

ID	Location	Recommendation	Responsible Agency	Timeframe	Safety Benefit	Cost
3	N. Indian Creek Drive & Church Street	Replace all pedestrian push buttons.	City of Clarkston	Intermediate Term	Moderate	Moderate
4		Improve lighting for the intersection.	City of Clarkston	Intermediate Term	Moderate	Moderate
5		Replace pedestrian signal heads, push buttons, and signs following current MUTCD guidelines.	City of Clarkston	Intermediate Term	Moderate	Moderate
6	N. Indian Creek Drive & Church Street	Update 5-section left turn indications to Flashing Yellow Arrow indications with other 3-section additions as required, add reflective back plates to all signal heads. Consider supplemental traffic signal heads, including nearside signal head to the right and far side signal heads to the left.	City of Clarkston	Intermediate Term	Moderate	Moderate

5.2.4 Corridor: N. Indian Creek Drive between Church Street & Rowland Street

Sidewalk improvements include a section for repair in this area of the corridor.

ID	Location	Recommendation	Responsible Agency	Timeframe	Safety Benefit	Cost
7	N. Indian Creek Drive between Church St and Rowland St	Repair approximately 25 linear feet of sidewalk along SB direction of N. Indian Creek Drive.	City of Clarkston	Long Term	Low	High

5.2.5 Intersection: N. Indian Creek Drive and Rowland Street

This intersection is located at the northern limits of the study area. A construction project is anticipated to be completed in 2019 at Rowland Street. Rowland Street access will be converted to 'right-in/right-out' with pedestrian refuge islands to be installed. Rowland Street is part of the regional [PATH trail system](#) and is used by a high volume of bicyclists and pedestrians. N. Indian Creek in this section is a 3-lane roadway with a bi-directional center left turn lane. There is a designated southbound right turn lane onto Rowland Street. The bike lane terminates at the intersection with Rowland Street and an additional northbound travel lane is re-introduced.

ID	Location	Recommendation	Responsible Agency	Timeframe	Safety Benefit	Cost
8	N. Indian Creek Drive and Rowland St	Repair approximately 25 linear feet of sidewalk at southeast quadrant of intersection, along NB direction of N. Indian Creek Drive.	City of Clarkston	Long Term	Low	High
9		Repair approximately 20 linear feet of sidewalk south of Rowland Street along SB direction of N. Indian Creek Drive.	City of Clarkston	Long Term	Low	High
10	N. Indian Creek Drive and Rowland St	Add bicycle warning signs (W11-1) at intersection in both directions along N. Indian Creek Drive.	City of Clarkston	Short Term	High	High

5.2.6 Corridor: N. Indian Creek Drive between Rowland Street & Rogers Street

Pedestrian improvements include a section for storm drain repair in this area of the corridor.

ID	Location	Recommendation	Responsible Agency	Timeframe	Safety Benefit	Cost
11	N. Indian Creek Drive between Rowland and Rogers St.	Repair storm drain inlets located on 75 feet south of Rowland Drive along SB direction of N. Indian Creek Drive.	City of Clarkston	Intermediate Term	High	High

5.2.7 Intersection: N. Indian Creek Drive and Rogers Street

This intersection is important for pedestrian activity as it connects several residential neighborhoods to the nearby community center. The community center offers numerous workforce training and English-proficiency courses for residents. A recent review of pedestrian crashes revealed a need for additional pedestrian visibility at this intersection.

ID	Location	Recommendation	Responsible Agency	Timeframe	Safety Benefit	Cost
12	N. Indian Creek Drive and Rogers Street	Install detectable warning surfaces on all corners of the intersection.	City of Clarkston	Intermediate Term	Moderate	Moderate
13		Reconstruct sidewalk ramps to be ADA-compliant and aligned with receiving ramps on all corners of the intersection.	City of Clarkston	Intermediate Term	Moderate	Moderate
14		Reconstruct approximately 10 linear feet of sidewalk south of driveway along SB direction of N. Indian Creek Drive.	City of Clarkston	Long Term	Low	High
15		Construct curb extension at NE corner of N. Indian Creek and Rogers Street.	City of Clarkston	Long Term	High	High
16		Trim vegetation on NE, SE corner of N. Indian Creek and Rogers Street. Establish maintenance schedule for trimming vegetation	City of Clarkston	Short Term	Moderate	Low
17		Adjacent landscaping obstructs sidewalk. Trim landscaping and establish maintenance schedule.	City of Clarkston	Short Term	Moderate	Low
18		Adjust height of Stop sign to be MUTCD compliant.	City of Clarkston	Short Term	Low	Low

5.2.8 Corridor: N. Indian Creek Drive between Rogers Street and Jackson Drive

This section of the corridor includes a driveway crossing which could be improved for pedestrians.

ID	Location	Recommendation	Responsible Agency	Timeframe	Safety Benefit	Cost
19	N. Indian Creek Drive between Rogers Street and Jackson Drive	Install painted crosswalk at Dollar General driveway.	City of Clarkston	Intermediate Term	Moderate	Moderate
20		Install detectable warning surfaces at both ramps across Dollar General driveway.	City of Clarkston	Intermediate Term	Moderate	Moderate
21		Reconstruct sidewalk ramps to be ADA-compliant and aligned with receiving ramps on both ends of Dollar General driveway.	City of Clarkston	Intermediate Term	Moderate	Moderate

5.2.9 Intersection: N. Indian Creek Drive and Jackson Drive

This intersection could be improved with detectable warning surfaces and a crosswalk.

ID	Location	Recommendation	Responsible Agency	Timeframe	Safety Benefit	Cost
22	N. Indian Creek Drive and Jackson Drive	Install detectable warning surfaces at both ramps across Jackson Drive along NB direction of N. Indian Creek Drive.	DeKalb County Transportation	Intermediate Term	Moderate	Moderate
23		Install crosswalk at driveway across Jackson Drive along NB direction of N. Indian Creek Drive.	DeKalb County Transportation	Intermediate Term	Moderate	Moderate

5.2.10 Corridor: N. Indian Creek Drive between Jackson Drive and Debelle Street

This section of the corridor contains an important mid-block crossing which connects residential land uses on the western side of the corridor with the Community Center on the eastern side of North Indian Creek Drive. This School RSA suggests further study of this important mid-block crossing due to suspected sight distance limitations from curvature of N. Indian Creek Drive, as well as bicycle and pedestrian incidents in nearby crossings.

ID	Location	Recommendation	Responsible Agency	Timeframe	Safety Benefit	Cost
24	N. Indian Creek Drive between Jackson Drive & Debelle St	Adjacent landscaping obstructs sidewalk. Trim landscaping.	City of Clarkston	Short Term	Moderate	Low
25		Reconstruct sidewalk ramps at crossing of Leasing Office driveway to be ADA-compliant.	City of Clarkston	Intermediate Term	Moderate	Moderate
26		Replace pedestrian crosswalk warning signs in each direction at Mid-Block Crossing near Jackson Drive with yellow-green Pedestrian Crossing warning (W11-2) sign.	City of Clarkston	Short Term	High	High
27		Improve lighting conditions at the Mid-Block Crossing near Jackson Drive.	City of Clarkston	Intermediate Term	Moderate	Moderate
28		Determine appropriate safety improvement for Mid-Block Crossing near Jackson Drive: PHB or RRFB.	City of Clarkston	Intermediate Term	High	High
29		Determine whether Mid-Block Crossing near Jackson Drive should be relocated due to sight distance concerns.	City of Clarkston	Long Term	High	High
30		Install detectable warning surfaces at both ramps across 935 N. Indian Creek Drive / Shop N Save Food Mart Driveway along NB direction of N. Indian Creek Drive.	City of Clarkston	Intermediate Term	Moderate	Moderate

5.2.11 Intersection: N. Indian Creek Drive and Debelles Street

The intersection of Debelles Street is located south of Rowland Street. Debelles Street intersects N. Indian Creek Drive to the east and west as an offset intersection. With commercial and high-density residential land uses in three of the intersection quadrants and the Atlanta Area School of the Deaf in the other, this intersection has a relatively greater concentration of crashes. The roadway width of Debelles Street contributes to increased turning speeds. It is difficult for all transportation modes to navigate this intersection due to excessive vehicle speeds and restrictive sight distance. The resulting crashes are illustrated in Figure 8.

ID	Location	Recommendation	Responsible Agency	Timeframe	Safety Benefit	Cost
31	N. Indian Creek Drive & Debelles St N. Indian Creek Drive & Debelles St	Reconstruct sidewalk ramps to be ADA-compliant and aligned with receiving ramps at NE & SE corner along NB direction of N. Indian Creek Drive as well as SW corner along SB direction of N. Indian Creek Drive.	City of Clarkston	Intermediate Term	Moderate	Moderate
32		Add W11-2 sign along NB direction of N. Indian Creek Drive just before the crosswalk. Replace pedestrian warning sign along SB direction of N. Indian Creek Drive at crosswalk with yellow-green Pedestrian Crossing warning (W11-2) sign.	City of Clarkston	Short Term	High	High
33		Improve lighting at intersection.	City of Clarkston	Intermediate Term	Moderate	Moderate
34		Install detectable warning surfaces at NE & SE corner along NB direction of N. Indian Creek Drive as well as SW corner along SB direction of N. Indian Creek Drive.	City of Clarkston	Intermediate Term	Moderate	Moderate
35		Restripe crosswalks both across Debelles Street sections and across N. Indian Creek Drive.	City of Clarkston	Short Term	Low	Low
36		Install Rectangular Rapid Flashing Beacon (RRFB) assemblies: one in each direction on both the left and right of the crosswalk, below each pedestrian crosswalk warning sign where present. Also add any needed W11-2 signs, see previous recommendation at this intersection.	City of Clarkston / DeKalb County Transportation / District 7	Intermediate Term	High	Moderate

5.2.12 Corridor: N. Indian Creek Drive between Debelle St and Jamieson Place

This section of the corridor needs sidewalk reconstructed.

ID	Location	Recommendation	Responsible Agency	Timeframe	Safety Benefit	Cost
37	N. Indian Creek Drive between Debelle St and Jamieson Place	Reconstruct approximately 1000 linear feet of sidewalk on the west side of North Indian Creek Drive south of Debelle Street. Account for drop-off on back side of sidewalk.	City of Clarkston	Long Term	Low	High

5.2.13 Intersection: N. Indian Creek Drive & Jamieson Place

This section of the corridor needs sidewalk ramps reconstructed.

ID	Location	Recommendation	Responsible Agency	Timeframe	Safety Benefit	Cost
38	N. Indian Creek Drive & Jamieson Place	Reconstruct SW sidewalk ramp to be ADA-compliant and aligned with receiving ramps. Add detectable warning surface to SW sidewalk ramp.	City of Clarkston	Intermediate Term	Moderate	Moderate

5.2.14 Corridor: N. Indian Creek Drive between Jamieson Place and The Lakes at Indian Creek Entrance

The section of N. Indian Creek Drive between Jamieson Place and The Lakes at Indian Creek Entrance has several different driveways to residential complexes, businesses, and one major place of worship: Masjid Al-Momineen of Stone Mountain.

ID	Location	Recommendation	Responsible Agency	Timeframe	Safety Benefit	Cost
39	N. Indian Creek Drive between Jamieson Place and The Lakes at Indian Creek Entrance	Regrade from Jamieson Place on west side of roadway, along SB direction of N. Indian Creek Drive approximately 400 feet to address ponding and improve drainage.	City of Clarkston	Long Term	Low	High
40		Repair approximately 15 linear feet of sidewalk on east side of roadway, north of entrance to Masjid Al-Momineen of Stone Mountain.	DeKalb County Transportation	Long Term	Low	High

ID	Location	Recommendation	Responsible Agency	Timeframe	Safety Benefit	Cost
41	N. Indian Creek Drive between Jamieson Place and The Lakes at Indian Creek Entrance	Install detectable warning surfaces across driveway along NB direction of N. Indian Creek Drive.	DeKalb County Transportation	Intermediate Term	Moderate	Moderate
42		Relocate utility pole guy wire located along SB direction of N. Indian Creek Drive on SW corner across from driveway to Masjid Al-Momineen of Stone Mountain.	DeKalb County Transportation	Short Term	High	High
43		Install pavement markings for school zone at 830 North Indian Creek Drive.	DeKalb County Transportation	Short Term	Low	Low
44		Repair sidewalk along NB direction of N. Indian Creek Drive from 823 North Indian Creek Drive approximately 75 linear feet south.	DeKalb County Transportation	Long Term	Low	High
45		Adjacent landscaping obstructs sidewalk. Trim landscaping near 823 North Indian Creek Drive along sidewalk along NB direction of N. Indian Creek Drive.	DeKalb County Transportation	Short Term	Low	Low
46		Repair exposed utility box at 823 North Indian Creek Drive along sidewalk along NB direction of N. Indian Creek Drive.	DeKalb County Transportation	Short Term	Low	Low
47		Install detectable warning surfaces at both ends of crossing across Chelsea Court Apartments driveway.	DeKalb County Transportation	Intermediate Term	Moderate	Moderate
48		Reconstruct sidewalk near at 792 N Indian Creek Drive.	DeKalb County Transportation	Long Term	Low	High

5.2.15 Intersection: N. Indian Creek Drive and The Lakes at Indian Creek Entrance

The intersection of N. Indian Creek Drive and The Lakes at Indian Creek entrance is an important student crossing location for Indian Creek Elementary. The Lakes at Indian Creek is an apartment complex on the eastern side of N. Indian Creek Drive, and Indian Creek Elementary school is located on the western side of the corridor. Currently there is a MARTA bus stop in each direction at this location. Past efforts to divert pedestrian traffic to the intersection of North Indian Creek Drive and Indian Creek Way were unsuccessful, and crossing guards are posted at this location during school arrival and dismissal.

During the RSA-observed school dismissal a total of 237 pedestrians crossed North Indian Creek Drive in a forty-minute period. In 2017, a four-year old child was killed by a speeding driver of a car while crossing at this location with family members and siblings. According to police crash reports, the incident occurred early in the morning, in a dark condition. The report also states that lighting was improved at this location, however this School RSA recommends additional improvements.

ID	Location	Recommendation	Responsible Agency	Timeframe	Safety Benefit	Cost
49	N. Indian Creek Drive & The Lakes at Indian Creek Entrance	Reconstruct/Repair curb on SB side of N. Indian Creek Drive at school crosswalk.	DeKalb County Transportation	Intermediate Term	Moderate	Moderate
50		Reconstruct/Repair sidewalk ramps to be ADA-compliant and aligned with receiving ramps at driveway on NB side of N. Indian Creek at Lakes at Indian Creek.	DeKalb County Transportation	Intermediate Term	Moderate	Moderate
51		Install crosswalk at driveway on NB side of N. Indian Creek at Lakes at Indian Creek.	DeKalb County Transportation	Intermediate Term	Moderate	Moderate
52		Determine appropriate safety improvement for School Crossing of N. Indian Creek Drive & The Lakes at Indian Creek either: RRFB, PHB or change in Intersection Control. Consider staging improvements.	DeKalb County Transportation / GDOT District 7 Maintenance to assist	Intermediate Term	High	High
53		Install school zone pavement markings to increase awareness of school zone in NB and SB directions on N. Indian Creek Drive.	DeKalb County Transportation	Short Term	Low	Low
54		Repair/replace pedestrian median refuge and add 5-10 ft wide section on northern side to protect crosswalk from both directions.	DeKalb County Transportation	Short Term	High	Moderate

ID	Location	Recommendation	Responsible Agency	Timeframe	Safety Benefit	Cost
55	N. Indian Creek Drive & The Lakes at Indian Creek Entrance	Install pedestrian landing area on west-side, school side to provide for queuing pedestrians.	DeKalb County Transportation / DeKalb County Schools / Indian Creek Elementary School	Intermediate Term	Moderate	Moderate
56		Reconstruct approximately 100 linear feet of sidewalk on the east side of roadway south of The Lakes driveway.	DeKalb County Transportation	Long Term	Low	High
57		Install sidewalk guy for utility pole located on east-side of roadway approximately 200 feet south of The Lakes at Indian Creek driveway	DeKalb County Transportation / Utility Provider	Short Term	Low	Low

5.2.16 Corridor: N. Indian Creek Drive between The Lakes at Indian Creek Entrance and Indian Creek Way

This section of the corridor needs curb repaired and lighting improved.

ID	Location	Recommendation	Responsible Agency	Timeframe	Safety Benefit	Cost
58	N. Indian Creek Drive between the Lakes at Indian Creek Entrance to Indian Creek Way	Repair approximately 1000 linear feet of curb along the east side, along NB direction of N. Indian Creek Way from the Lakes at Indian Creek Entrance to Indian Creek Way.	DeKalb County Transportation	Long Term	Moderate	High
59		Improve lighting at school drop-off / bus exit along SB direction of N. Indian Creek Way.	DeKalb County Transportation	Intermediate Term	Moderate	Moderate

5.2.17 Intersection: N. Indian Creek Drive and Indian Creek Way

This intersection is located at the south exit of Indian Creek Elementary School. Multi-family housing is adjacent to Indian Creek Way for its entire extent, and the roadway makes the connection to Northern Avenue to the west. Indian Creek Way is a two-lane roadway with consistent sidewalk along both sides in fair repair. Right turns on red are prohibited at the intersection with N. Indian Creek Drive. Congestion was noted at both drop-off and pick-up times due to its proximity to the exit of the circulatory route of Indian Creek Elementary. This intersection, along with Jolly Avenue, are equipped with crossing guards at arrival and dismissal times.

The following observations were made at the intersection:

1. All pedestrian signals were operable.
2. Crosswalks were marked.
3. Vehicular traffic sometimes uses the front school driveway to bypass the line of cars waiting during times of congestion at the signal.
4. During school arrival and dismissal, parents using personal vehicles to pick-up their children stage in parking lots on the south side of Indian Creek way. This “park and walk” practice removes cars from the queue at the school but increases the number of students crossing at this location.

ID	Location	Recommendation	Responsible Agency	Timeframe	Safety Benefit	Cost
60	N. Indian Creek Drive & Indian Creek Way	Improve lighting at the intersection.	DeKalb County Transportation	Intermediate Term	Moderate	Moderate
61		Repair approximately 50 linear feet of sidewalk on east side of roadway from crosswalk south along NB direction of N. Indian Creek Drive.	DeKalb County Transportation	Long Term	Low	High
62		Replace pedestrian signal heads, push buttons, and signs following current MUTCD guidelines.	DeKalb County Transportation	Intermediate Term	Moderate	Moderate
63		Traffic signal timing improvements: consider peak-time Leading Pedestrian Interval (LPI) and implement use of crossing guard key for additional pedestrian walk time.	DeKalb County Transportation	Short Term	High	Low
64		Update 5-section left turn indications to Flashing Yellow Arrow indications with other 3-section additions as required, add reflective back plates to all signal heads. Consider supplemental traffic signal heads.	DeKalb County Transportation	Intermediate Term	Moderate	Moderate

ID	Location	Recommendation	Responsible Agency	Timeframe	Safety Benefit	Cost
65	N. Indian Creek Drive & Indian Creek Way	Striping improvements: termination of two-way left turn lane, consider addition of bike box.	DeKalb County Transportation	Intermediate Term	Moderate	Low
66		Reconstruct sidewalk ramps to be ADA-compliant with detectable warning surfaces at all corners: NE, NW, SW.	DeKalb County Transportation	Intermediate Term	Moderate	Moderate
67		Clean debris for approximately 50 linear feet of sidewalk, beginning about 275 ft east of Jolly Ave.	DeKalb County Transportation	Short Term	Low	Low

5.3 Indian Creek Way

The audit team evaluated Indian Creek Way from N. Indian Creek Drive to Jolly Avenue. The exit used for both the school circulatory route and the teacher parking is directly adjacent to Indian Creek Way. Indian Creek Way is a two-lane roadway with sidewalks present along both sides. Sidewalk along the south side terminates at Ridge Creek Drive.

The following observations were made at the intersection:

1. Sidewalks are present and in good repair.
2. Students cross unattended to multi-family housing and a “park and walk” site where parents stage for pick-up along the south side of Indian Creek Way.
3. Elementary School entrance can be used to bypass the line of cars waiting during times of congestion.
4. Vehicle traffic was observed traveling in excess of the posted speed limit.

ID	Location	Recommendation	Responsible Agency	Timeframe	Safety Benefit	Cost
68	Indian Creek Way & Jolly Avenue	Reconstruct all three sidewalk ramps to be ADA-compliant and aligned with receiving ramps, including detectable warning surfaces.	DeKalb County Transportation	Intermediate Term	Moderate	Moderate
69		Restripe crosswalks both across Indian Creek Way and Jolly Avenue.	DeKalb County Transportation	Short Term	Low	Low



Crossing guard assists parent and child across Jolly Avenue.

5.3.1 Intersection: N. Indian Creek Drive & Memorial College Avenue

This section of the corridor needs sidewalk repaired and lighting improved.

ID	Location	Recommendation	Responsible Agency	Timeframe	Safety Benefit	Cost
70	N. Indian Creek Drive between the Lakes at Indian Creek Entrance to Indian Creek Way	Repair approximately 20 linear feet of sidewalk on east side of roadway, from the NE corner of the intersection north along the NB direction of N. Indian Creek Drive.	DeKalb County Transportation	Long Term	Low	High
71		Reconstruct sidewalk ramp on SW corner to be ADA-compliant and aligned with receiving ramps.	DeKalb County Transportation	Intermediate Term	Moderate	Moderate
72		Reconstruct approximately 200 linear feet of sidewalk along west side of roadway, beginning at NW corner of the intersection south along the SB direction of N. Indian Creek Drive.	DeKalb County Transportation	Long Term	Low	High
73		Improve lighting conditions on the west side of roadway, along NB direction of N. Indian Creek Drive.	DeKalb County Transportation	Intermediate Term	Moderate	Moderate
74		Restripe both crosswalks.	DeKalb County Transportation	Short Term	Low	Low

5.3.2 Corridor: N. Indian Creek Drive between Memorial College Avenue and Indian Creek Lane

This section of the corridor needs sidewalk repaired.

ID	Location	Recommendation	Responsible Agency	Timeframe	Safety Benefit	Cost
75	North Indian Creek Drive between Memorial College Avenue and Indian Creek Lane	Reconstruct 50 linear feet of sidewalk, beginning approximately 120 feet north of Indian Creek Lane along SB direction of N. Indian Creek Drive to approximately 70 feet north of Indian Creek Lane.	DeKalb County Transportation	Long Term	Low	High

5.3.3 Intersection: N. Indian Creek Drive & Indian Creek Lane

This section of the corridor needs some restriping and installation of detectable warning surfaces.

ID	Location	Recommendation	Responsible Agency	Timeframe	Safety Benefit	Cost
76	N. Indian Creek Drive & Indian Creek Lane	Install detectable warning surfaces at NW and SW corners of the intersection.	DeKalb County Transportation	Intermediate Term	Moderate	Moderate
77		Restripe crosswalk along SB direction of North Indian Creek Drive across Indian Creek Lane.	DeKalb County Transportation	Short Term	Low	Low

5.3.4 Intersection: N. Indian Creek Drive & Clarkston High School, Northern Entrance

This section of the corridor needs some restriping and installation of detectable warning surfaces.

ID	Location	Recommendation	Responsible Agency	Timeframe	Safety Benefit	Cost
78	N. Indian Creek Drive & Clarkston High School, Northern Entrance	Install detectable warning surfaces at NW and SW corners of the intersection.	DeKalb County Transportation	Intermediate Term	Moderate	Moderate
79		Restripe crosswalk along SB direction of North Indian Creek Drive across Indian Creek Lane.	DeKalb County Transportation	Short Term	Low	Low

5.3.5 Corridor: N. Indian Creek Drive between Clarkston High School, Northern Entrance and Southern Entrance / Georgia State Exit Driveway

This section of the corridor needs sidewalk repaired and a nearby mid-block crossing improved.

ID	Location	Recommendation	Responsible Agency	Timeframe	Safety Benefit	Cost
80	N. Indian Creek Drive between Clarkston High School, Northern Entrance and Southern Entrance / Georgia State Exit Driveway	Repair approximately 25 linear feet of sidewalk, starting 80 feet south of Clarkston High School, Northern Entrance along SB direction of N. Indian Creek Drive.	DeKalb County Transportation	Long Term	Low	High
81		Replace Pedestrian Crossing Sign (W11-2) along SB direction of N. Indian Creek Drive at Mid-Block Crossing in front of Clarkston High School. Add State Law to Yield (R1-6) with SCHOOL (S4-3P) in-street sign at median.	DeKalb County Transportation	Short Term	Moderate	Low
82		Determine appropriate safety improvement for Mid-Block Crossing in front of Clarkston High School. Consider: RRFB, PHB, or change in intersection control.	DeKalb County Transportation / GDOT District 7 Maintenance to assist	Intermediate Term	High	High
83		Repair approximately 30 linear feet of sidewalk, starting approximately 200 feet south of Clarkston High School, Northern Entrance along SB direction of N. Indian Creek Drive.	DeKalb County Transportation	Long Term	Low	High
84		Repair approximately 50 linear feet of sidewalk, from approximately 350 feet north of Clarkston High School southern entrance to 300 feet north of the entrance along SB direction of N. Indian Creek Drive.	DeKalb County Transportation	Long Term	Low	High
85		Repair approximately 20 linear feet of sidewalk, approximately 170 feet north of Clarkston High School southern entrance along SB direction of N. Indian Creek Drive.	DeKalb County Transportation	Long Term	Low	High

5.3.6 Corridor: N. Indian Creek Drive between Georgia State University Clarkston Campus Exit Driveway and Milligan Drive

This section of the corridor needs sidewalk repaired, ramps reconstructed, and lighting improved.

ID	Location	Recommendation	Responsible Agency	Timeframe	Safety Benefit	Cost
86	N. Indian Creek Drive between Georgia State University Clarkston Campus Exit Driveway and Milligan Drive	Reconstruct both sidewalk ramps at Georgia State University Clarkston Campus exit driveway along NB direction of N. Indian Creek Drive to be ADA-compliant and aligned with receiving ramps.	DeKalb County Transportation	Intermediate Term	Moderate	Moderate
87		Install crosswalk at Georgia State University Clarkston Campus exit driveway along NB direction of N. Indian Creek Drive.	DeKalb County Transportation	Intermediate Term	Moderate	Moderate
88		Install Type 1 arrow at Georgia State University Clarkston Campus exit driveway in direction of one-way flow.	DeKalb County Transportation	Short Term	Moderate	Low
89		Reconstruct both sidewalk ramps at Georgia State University Clarkston Campus exit driveway along NB direction of N. Indian Creek Drive to be ADA-compliant and aligned with receiving ramps.	DeKalb County Transportation	Intermediate Term	Moderate	Moderate
90		Consider removing direct sidewalk path from school entrance to old crosswalk and enhance direct route to new mid-block crossing.	DeKalb County School District	Intermediate Term	Moderate	Moderate
91		Improve lighting along west side, SB direction of N. Indian Creek Drive approximately 150 feet south of Clarkston High School southern entrance.	DeKalb County Transportation	Intermediate Term	Moderate	Moderate
92		Repair storm drain inlet 300 feet north of Milligan Drive on west side, SB direction of N. Indian Creek Drive.	DeKalb County Transportation	Intermediate Term	Low	Moderate

5.3.7 Corridor: N. Indian Creek Drive between Milligan Drive and SR 10 / Memorial

This section of the corridor needs sidewalk ramps repaired and improvements for mid-block crossing.

ID	Location	Recommendation	Responsible Agency	Timeframe	Safety Benefit	Cost
93	N. Indian Creek Drive between Milligan Drive and SR 10 / Memorial	Adjust pedestrian warning sign at mid-block crossing south of Milligan Drive along SB direction of N. Indian Creek Drive to face southbound traffic. Add State Law to Yield (R1-6) in-street sign at median.	DeKalb County Transportation	Short Term	Low	Low
94		Reconstruct sidewalk ramps to be ADA-compliant and aligned with receiving ramps along driveway crossings on east side, NB direction of N. Indian Creek Drive.	DeKalb County Transportation	Intermediate Term	Moderate	Moderate
95		Determine appropriate safety improvement at mid-block crossing south of Milligan Drive along SB direction of N. Indian Creek Drive either: RRFB, PHB.	DeKalb County Transportation	Long Term	High	High
96		Construct 10 sidewalk ramps to be ADA-compliant and aligned with receiving ramps along east side of roadway.	DeKalb County Transportation	Long Term	Moderate	High
97		Construct approximately 750 feet of new sidewalk from near 452 North Indian Creek Drive to connect existing sidewalks along east side, SB direction N. Indian Creek Drive to Memorial Drive.	DeKalb County Transportation	Long Term	Low	High
98		Repair approximately 200 linear feet of sidewalk along west side of roadway, SB direction of N. Indian Creek Drive from cemetery to approximately 450 N. Indian Creek Drive.	DeKalb County Transportation	Long Term	Low	High

5.3.8 Corridor: Rockbridge Road, along EB side of Rockbridge from N. Indian Creek Drive to SR 10 / Memorial

This section of the corridor needs sidewalk installed.

ID	Location	Recommendation	Responsible Agency	Timeframe	Safety Benefit	Cost
99	Rockbridge Road, along EB side of Rockbridge from N. Indian Creek Drive to SR 10 / Memorial	Construct approximately 1000 linear feet of sidewalk along south side of roadway, EB direction along Rockbridge Rd from N. Indian Creek Drive to SR 10 / Memorial	DeKalb County Transportation	Long Term	Moderate	High

5.3.9 Corridor: Rockbridge Road, along WB side of Rockbridge from SR 10 to N. Indian Creek Drive

This section of the corridor needs sidewalk installed.

ID	Location	Recommendation	Responsible Agency	Timeframe	Safety Benefit	Cost
100	Rockbridge Road, along WB side of Rockbridge from SR 10 to N. Indian Creek Drive	Construct approximately 75 linear feet of sidewalk along north side of roadway to connect sidewalk from QuikTrip to existing sidewalk.	DeKalb County Transportation	Long Term	Moderate	High

5.3.10 Intersection: N. Indian Creek Drive Ext & Rockbridge Road SW

This section of the corridor needs detectable warning surfaces.

ID	Location	Recommendation	Responsible Agency	Timeframe	Safety Benefit	Cost
101	N. Indian Creek Drive Ext & Rockbridge Road SW	Install detectable warning surfaces in median refuge.	DeKalb County Transportation	Intermediate Term	Moderate	Moderate

5.3.11 Intersection: N. Indian Creek Drive & N Decatur Rd / Rockbridge Road SW

This section of the corridor needs signal upgrades, sign improvements, and lighting improved.

ID	Location	Recommendation	Responsible Agency	Timeframe	Safety Benefit	Cost
102	N. Indian Creek Drive & N Decatur Rd / Rockbridge Road SW	Improve lighting in this location, especially the SE quadrant.	DeKalb County Transportation	Intermediate Term	Moderate	Moderate
103		Update 5-section left turn indications to Flashing Yellow Arrow indications with other 3-section additions as required, add reflective back plates to all signal heads at the intersection of N. Indian Creek Drive & N Decatur Rd / Rockbridge Road SW	DeKalb County Transportation	Intermediate Term	Moderate	Moderate
104		Add pedestrian warning sign (W11-2) along NB direction of N. Indian Creek Drive approximately 125 ft south of the intersection of N. Indian Creek Drive & N Decatur Rd / Rockbridge Road SW	DeKalb County Transportation	Short Term	Moderate	Low
105		Install curb extensions and tighten turn radii at NW and SE corners at the intersection of N. Indian Creek Drive & N Decatur Rd / Rockbridge Road SW	DeKalb County Transportation	Long Term	High	High

5.3.12 Intersection: N. Indian Creek Drive & SR 10 / Memorial Drive

This section of the corridor needs lighting improved, as described in the recommendations below. Additional improvements are planned through a Road Safety Audit currently in development for SR 10 / Memorial Drive.

ID	Location	Recommendation	Responsible Agency	Timeframe	Safety Benefit	Cost
106	N. Indian Creek Drive & SR 10 / Memorial Drive	Improve lighting to improve visibility of pedestrians in crosswalks.	GDOT District 7 Utilities / DeKalb County	Intermediate Term	Moderate	Moderate

5.4 Potential Projects

The following project packages are suggestions from the School RSA team which combine several recommendations which are reasonable to implement together. The SRTS team suggests that the recommendations stated in this report be implemented as resources become available. The responsible agency(s) should document any decisions to modify or eliminate recommendations based on engineering judgement or lack of feasibility.

5.4.1 Project #1: Pedestrian Improvements at Northern Entrance of Indian Creek Elementary School

During the site evaluation, the pedestrian crossing across N. Indian Creek Dr at the entrance to Indian Creek Elementary School and The Lakes at Indian Creek was heavily trafficked during arrival and dismissal times. It is at this location that a student was struck and killed in 2017. Due to the high volume of pedestrian users, several recommended improvements can be combined into one project. The southwest quadrant is used as a shared bus stop for MARTA, local industries, and local middle and high schools. During our review, we counted upwards of 200 individuals waiting in that location.

It should be noted that during the field review, DeKalb County Engineering shared that this intersection had been reviewed for a signal warrant. Prior to the implementation of any recommendations at this location, coordination with DeKalb County Engineering is recommended.

A comprehensive intersection project to improve pedestrian safety includes the following:

- Determine appropriate safety improvement for School Crossing of N. Indian Creek Drive & The Lakes at Indian Creek either: RRFB, PHB or change in Intersection Control. Consider staging improvements.
- Install crosswalk and ADA ramps across entrance for the Lakes at Indian Creek.
- Reconstruct/Repair curb on SB side of N. Indian Creek Drive at school crosswalk.
- Repair/replace pedestrian median refuge and add 5-10 ft wide section on northern side to protect crosswalk from both directions.
- Coordinate with Dekalb County Schools to install pedestrian landing area on west-side, school side to provide for queuing pedestrians.
- Reconstruct approximately 100 linear feet of sidewalk on the east side of roadway south of The Lakes driveway.

5.4.2 Project #2: Sidewalk Reconstruction

Numerous gaps exist in the sidewalks within the study area. A comprehensive sidewalk project can target sidewalk gaps and related sidewalk improvements to create a continuous sidewalk network. Sidewalk improvements are needed along N. Indian Creek Drive at:

- North Indian Creek Drive between Church St and Rowland St
- Rowland St intersection
- Rogers St intersection
- North Indian Creek Drive between Rogers St and Jackson Dr
- Jackson Drive intersection
- North Indian Creek Drive between Jackson Dr & Debelle St
- Debelle St intersection
- N. Indian Creek Drive between Debelle St and Jamieson Place
- Jamieson Place
- N. Indian Creek Drive between Jamieson Place and The Lakes at Indian Creek Entrance
- The Lakes at Indian Creek Entrance
- N. Indian Creek Drive between the Lakes at Indian Creek Entrance to Indian Creek Way
- Indian Creek Way
- Indian Creek Way & Jolly Ave
- Memorial College Avenue
- North Indian Creek Drive between Memorial College Avenue and Indian Creek Lane
- Indian Creek Lane
- Clarkston High School, Northern Entrance
- N. Indian Creek Drive between Clarkston High School, Northern Entrance and Southern Entrance / Georgia
- N. Indian Creek Drive between Georgia State University Clarkston Campus Exit Driveway and Milligan Drive
- N. Indian Creek Drive between Milligan Drive and SR 10 / Memorial
- Rockbridge Road, along EB side of Rockbridge from N. Indian Creek Drive to SR 10 / Memorial
- Rockbridge Road, along WB side of Rockbridge from SR 10 to N. Indian Creek Drive
- N. Indian Creek Drive Ext & Rockbridge Road SW
- N. Indian Creek Drive & N Decatur Rd / Rockbridge Road SW

6. Conclusions

The School Road Safety Audit of study corridors around Indian Creek Elementary School, Atlanta Area School for the Deaf, and Clarkston High School in Clarkston, Georgia, sought to identify safety concerns and present recommendations to encourage safer road design. The School RSA team addressed the concerns of all road users: including bicycles, motor vehicles, and pedestrians. Recommendations were given with the consideration of existing roadway constraints including right-of-way, land use, and the volume of traffic along the corridor.

The next steps are for GDOT, City of Clarkston, and representatives of DeKalb County to implement the findings of this report in future projects on the study corridors when feasible and resources are available. This report will allow them to prioritize and coordinate safety enhancements along the walking and bicycling routes to school.

While this report contains a significant amount of recommendations, breaking them out by safety benefit allows owning agencies to develop effective goals to upgrade safety along the corridor. Short term measures include updating signage, improving lighting, and repairing pavement markings. Intermediate solutions include reconstructing sidewalks, reducing speed limits in school zones, install traffic calming measures along the corridor, restriping intersection markings, and supplementing pedestrian refuge islands. More long-term solutions involve installing traffic calming measures along the corridor and intersection improvements at specific intersections along the corridor.

Through implementation of these and other potential measures, walking and bicycling routes to Indian Creek Elementary School, Atlanta Area School for the Deaf, and Clarkston High School can become safer for all users. The School RSA team suggests recommendations in this report be implemented as resources become available. The responsible agency(s) should document any decisions to modify or eliminate recommendations based on engineering judgement or lack of feasibility.

Appendix A School Prioritization Methodology

During July-November 2018, AECOM and the Georgia Department of Transportation (GDOT) created an objective score-based prioritization method to rank schools for future Safe Routes to Schools (SRTS) School Road Safety Audits (School RSA). This process includes three main stages: criteria and weighting refinement, data collection and assignment, and top-scoring school identification. This process identified the top schools for this year's School RSA from a total of greater than 3,000 schools across Georgia.

Specific criteria were developed in conjunction with GDOT to prioritize schools for the Georgia School RSA project, and are included in Table 1. The first criterion specified the School RSA should be conducted where multiple schools are located in close proximity to one another. Through multiple conversations with GDOT the geographic scope applied to other criteria were also refined. For example, the criterion of recent crashes was collected within one-quarter mile of each school, and then subsequently expanded to a half-mile distance from each school.

Table 1. SRTS Prioritization Lenses

Lens	Logic	Criteria Considered	Weight for School RSA Score
Area Character	Schools located near areas where a higher proportion of the population are children will be more appropriate for walking & bicycling	Schools within ½ mile of Census Tracts with at least 25% of the population (ACS 2011-2015 summary data) under age of 18	Filtering criteria, prior to score development
Exposure	Schools near high traffic volumes are more likely to experience unsafe conditions	1. Number of crashes within ½ mile of school 2. Traffic volumes along nearest non-interstate route, most recent year available	1. Crashes w/ severe injuries = 0.25; Crashes w/ property damage only = 0.10; Crashes involving bicycle or pedestrian = 0.35 2. Traffic volume = 0.15
Geographic	Focus on locations where schools are clustered	Two or more schools located within ½ mile of one another	Filtering criteria, prior to score development
Equity	Explicitly recognizing historic and current systems of inequities (e.g. racism, geographic segregation, income inequality)	Number of students who are likely to walk or bike to school approximated by the proportion of enrolled student population eligible for free or reduced lunch	Proportion eligible = 0.15
Engagement	Currently active/engaged schools which are known to Safe Routes to School Outreach Coordinators will be more willing to engage with School RSA process	Whether the school is known by the Safe Routes to School Outreach Coordinator, any other details provided from that relationship	Considered after score development

Source: AECOM November 2017

Each of these criteria were then weighted and summed in order to create a School RSA score for each school. The weights were determined iteratively with GDOT and are also reported in the last column of Table 1. Weighting also allows an average score for school clusters, which can then be sorted to identify the top-scoring school clusters for a School RSA.

Finally, the physical locations of high-scoring school clusters were examined to ensure they were not bifurcated by a highway or topography which might physically prevent walking and biking to school. Thirty-six (36) schools in fifteen (15) clustered locations across Georgia met these criteria and were prioritized for SRSA outreach in fiscal year 2018.

Appendix B School RSA Invite/Attendees

Chante Lemon	Dekalb County School District
David Yoke	Dekalb County School District
Patrece Keeter	Dekalb County Transportation
Herman Fowler	Dekalb County Transportation
Rashad Wise	Dekalb County Transportation
Trae Kent	GDOT District 7 Traffic Operations
Carlos Baker	GDOT TMC
Sylvia Smith	Dekalb County Government
Andrew McBurney	MARTA
Robin Gomez	City of Clarkston
Larry Kaiser	Collaborative Infrastructure Services
Hayley Hamilton	PEDS
Marielena Gutierrez	Georgia Safe Routes to School
Bryanna Saunders	AECOM
Elizabeth Yarnall	AECOM
Tim Parker	Toole Design Group
Brent Moser	Toole Design Group

Appendix C Crash Analysis Data

Collision Types within the study area

Collision Type	2014	2015	2016	Total Crashes
Angle	41	55	51	147
Head On	4	3	1	8
Not A Collision with Motor Vehicle	13	9	8	30
Rear End	58	69	57	184
Sideswipe-Opposite Direction	6	1	4	11
Sideswipe-Same Direction	11	14	14	39
Total Crashes	133	151	135	419
Fatalities	0	0	0	0
Non-Fatal Injuries	42	49	38	129
Average Crashes Per Year	32%	36%	32%	100%

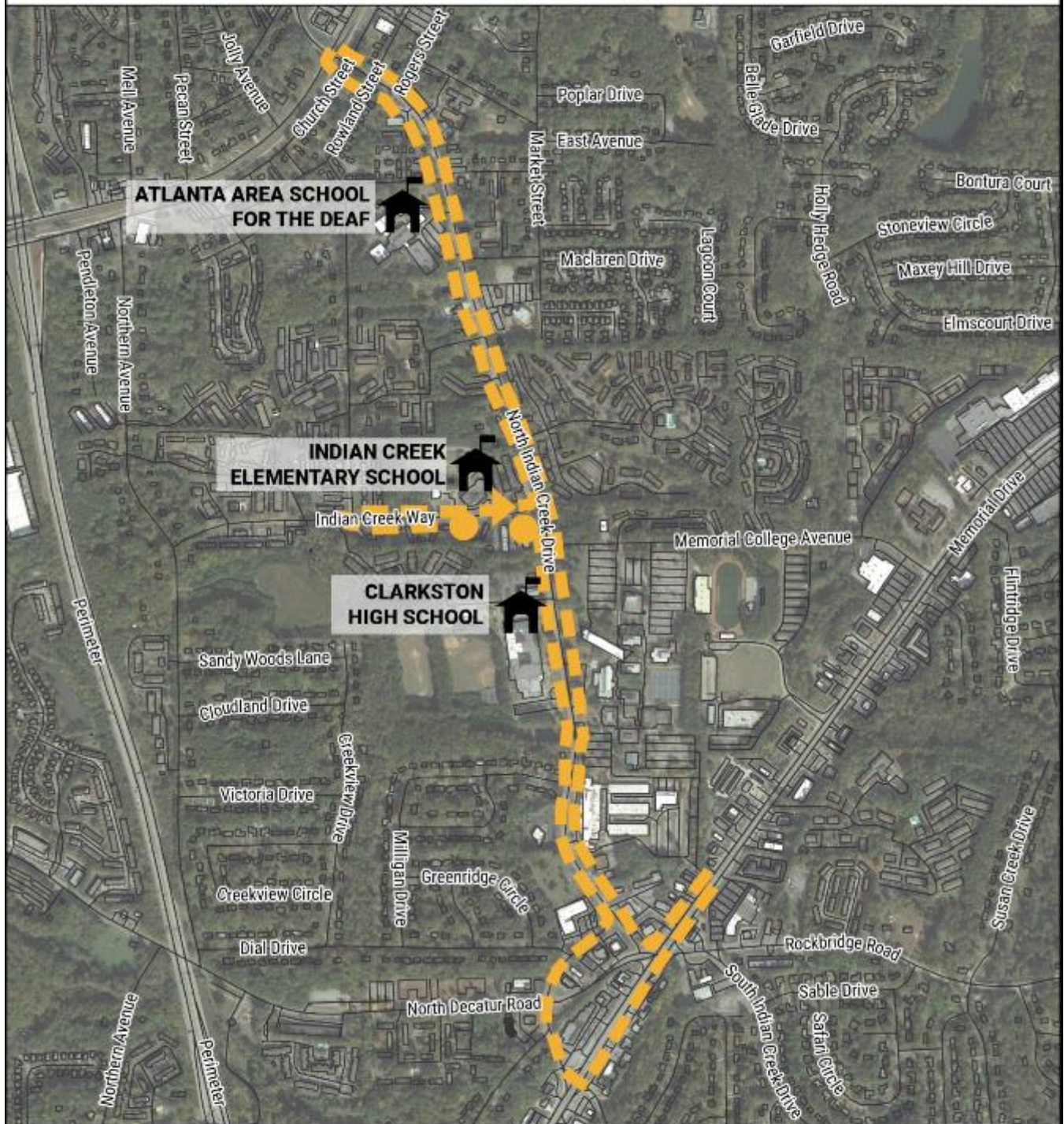
For collisions involving two motor vehicles, the chart below represents the movements of the first vehicle involved in the collision.

Motor Vehicle 1 Behavior	2014	2015	2016	Grand Total
Backing	16	7	9	32
Changing Lanes	4	11	14	29
Entering/Leaving Driveway	4	8	9	21
Entering/Leaving Parking		1		1
Negotiating A Curve	2		1	3
Parked		1		1
Passing	1	8	1	10
Stopped		3		3
Straight	81	77	63	221
Turning Left	17	28	24	69
Turning Right	8	5	12	25
Grand Total	133	149	133	415

For collisions involving two motor vehicles, the chart below represents the movements of the second vehicle involved in the collision.

Motor Vehicle 2 Behavior	2014	2015	2016	Grand Total
Backing		1	1	2
Changing Lanes		2		2
Entering/Leaving Driveway			1	1
Negotiating A Curve		1	1	2
Parked	9	11	4	24
Passing	1	1		2
Stopped	38	39	25	102
Straight	64	81	89	234
Turning Left	5	5	5	15
Turning Right	2	4	4	10
Grand Total	119	145	130	394

Clarkston Study Area



Schools

— Roads

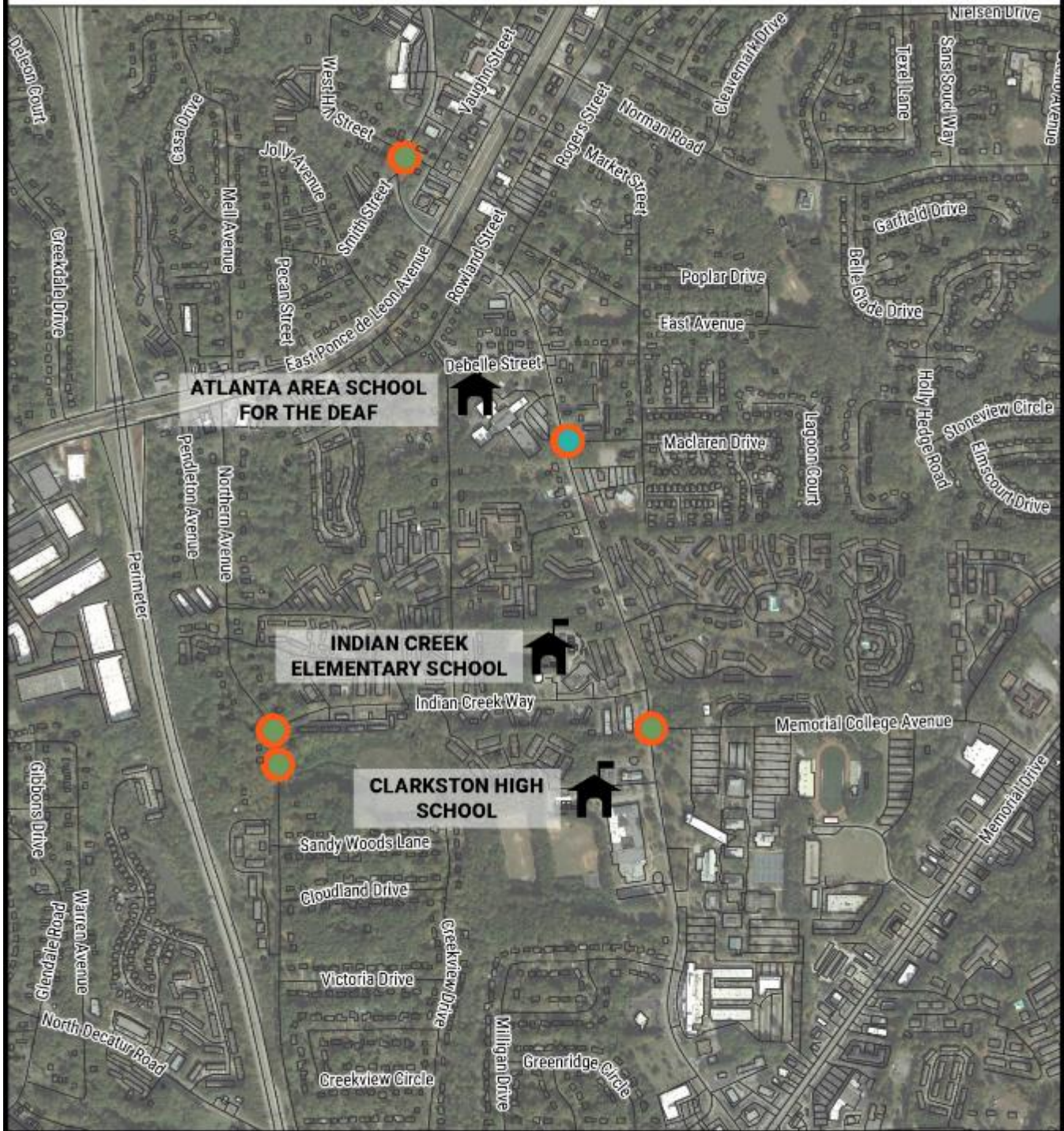
Study Area



0 500 1000 ft



Clarkston Bicycle & Pedestrian Crashes



AI

Clarkston Crashes - Angle



Crash Type

- Not a Collision with a Motor Vehicle
- Angle
- Rear End
- Head On
- Sideswipe



0 500 1000 ft

Clarkston Crashes - Head On



Crash Type

- Not a Collision with a Motor Vehicle
- Angle
- Rear End
- Head On
- Sideswipe



0 500 1000 ft

Clarkston Crashes - Not a Collision with a Motor Vehicle



Crash Type

- Not a Collision with a Motor Vehicle
- Angle
- Rear End
- Head On
- Sideswipe



0 500 1000 ft

Clarkston Crashes - Rear End



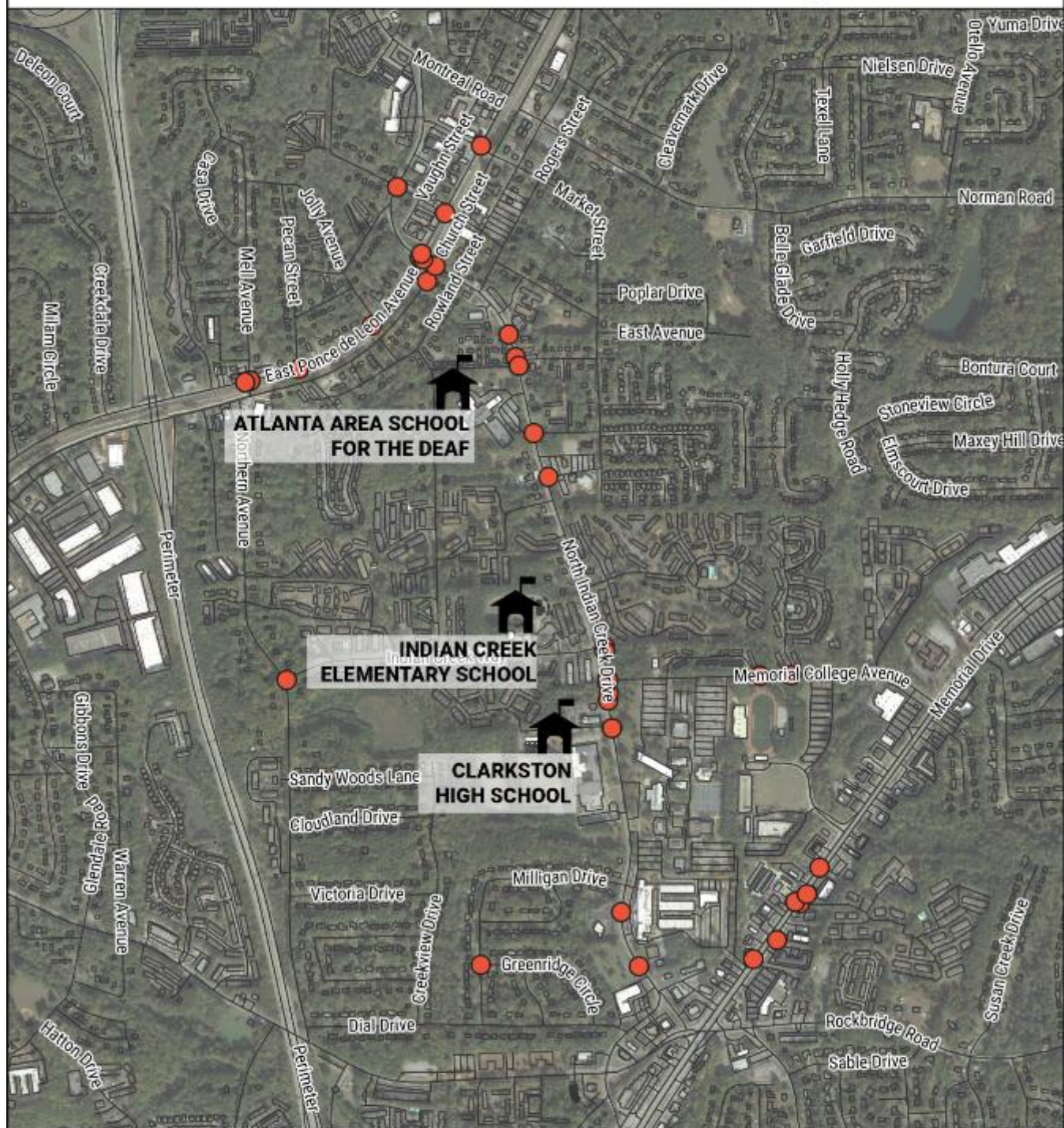
Crash Type

- Not a Collision with a Motor Vehicle
- Angle
- Rear End
- Head On
- Sideswipe



0 500 1000 ft

Clarkston Crashes - Sideswipe



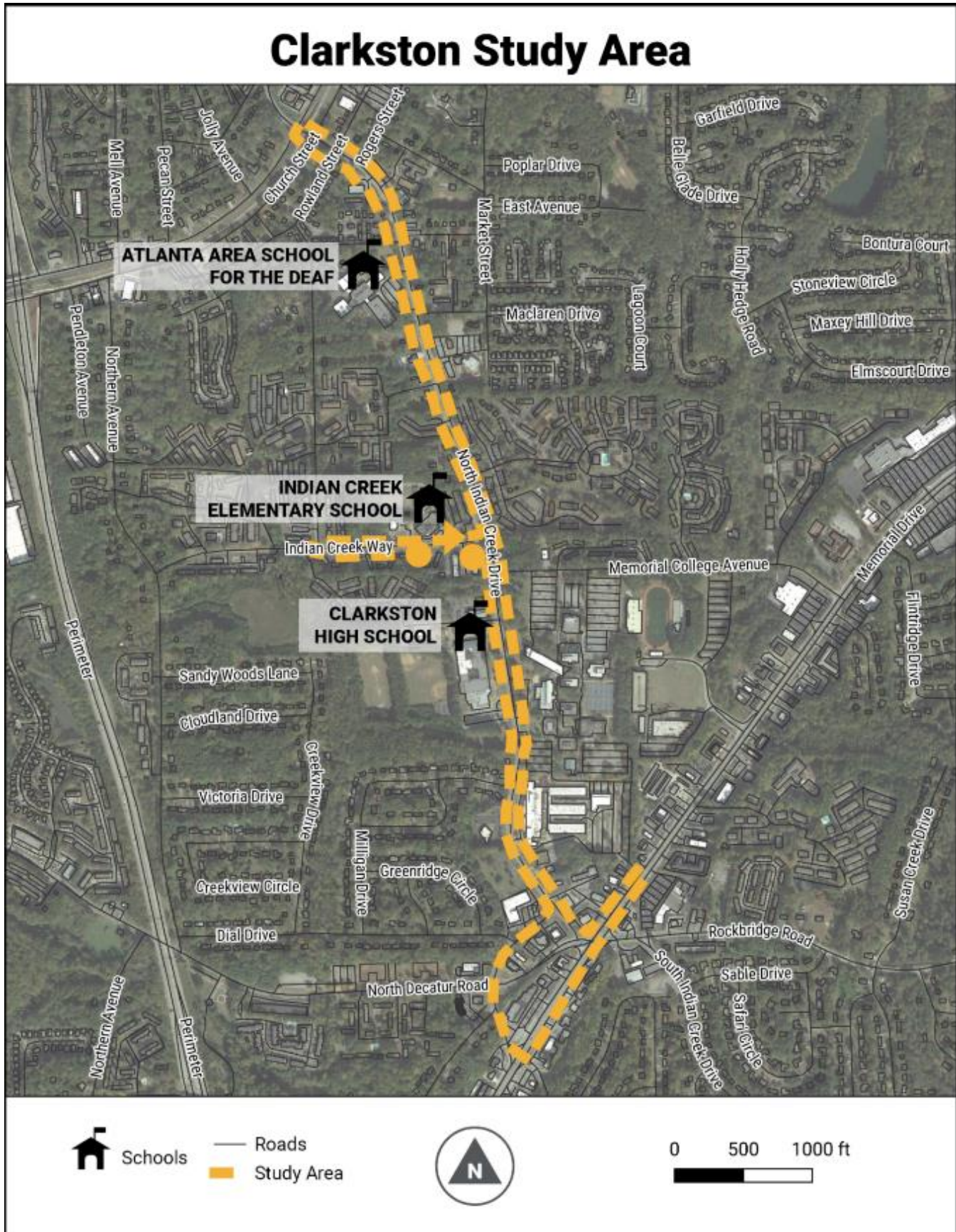
Crash Type

- Not A Collision with Motor Vehicle
- Angle
- Head On
- Sideswipe
- Rear End



0 500 1000 ft

Appendix D School RSA Maps



Indian Creek Elementary School Attendance Boundary

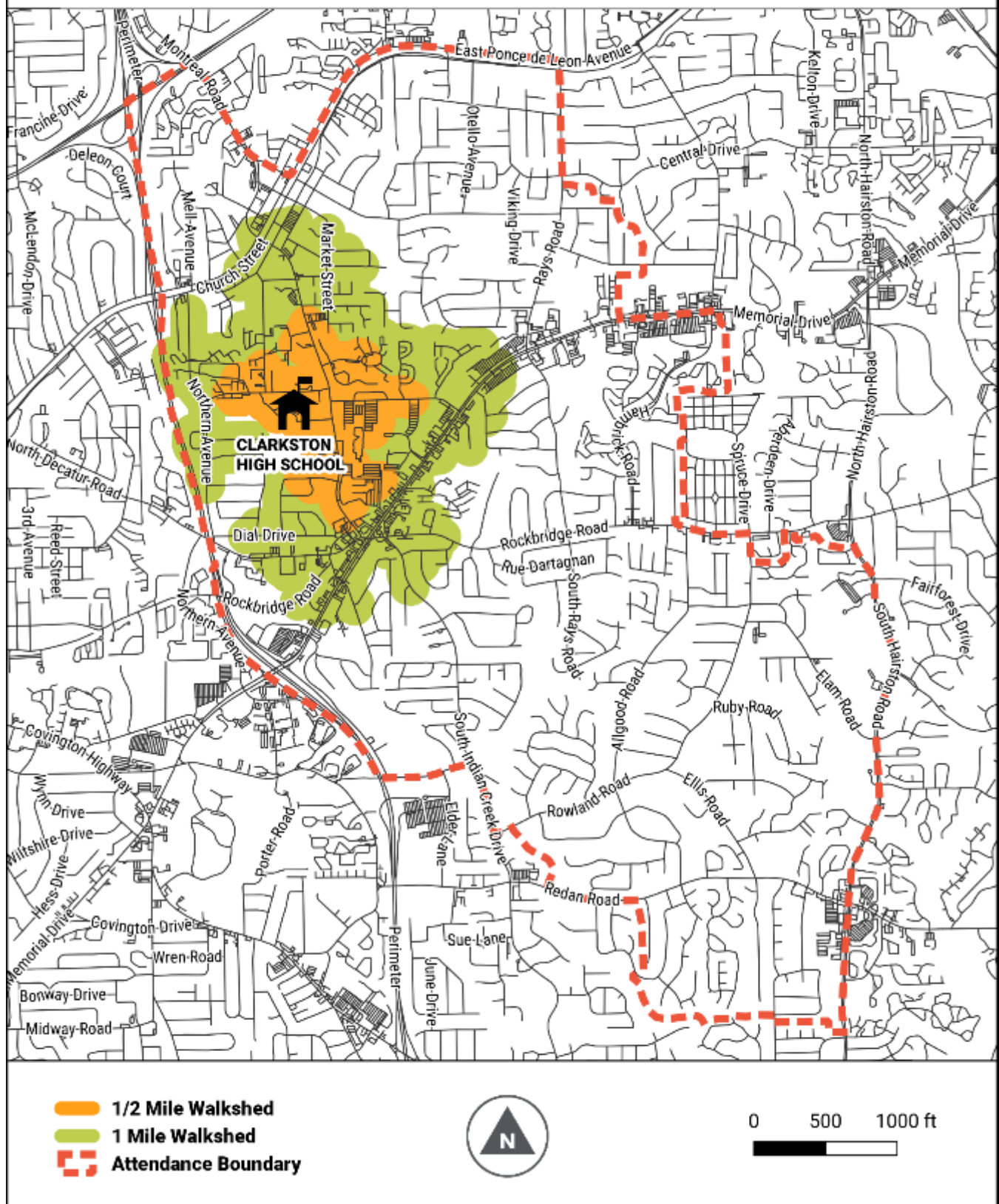


- 1/2 Mile Walkshed
- 1 Mile Walkshed
- Attendance Boundary

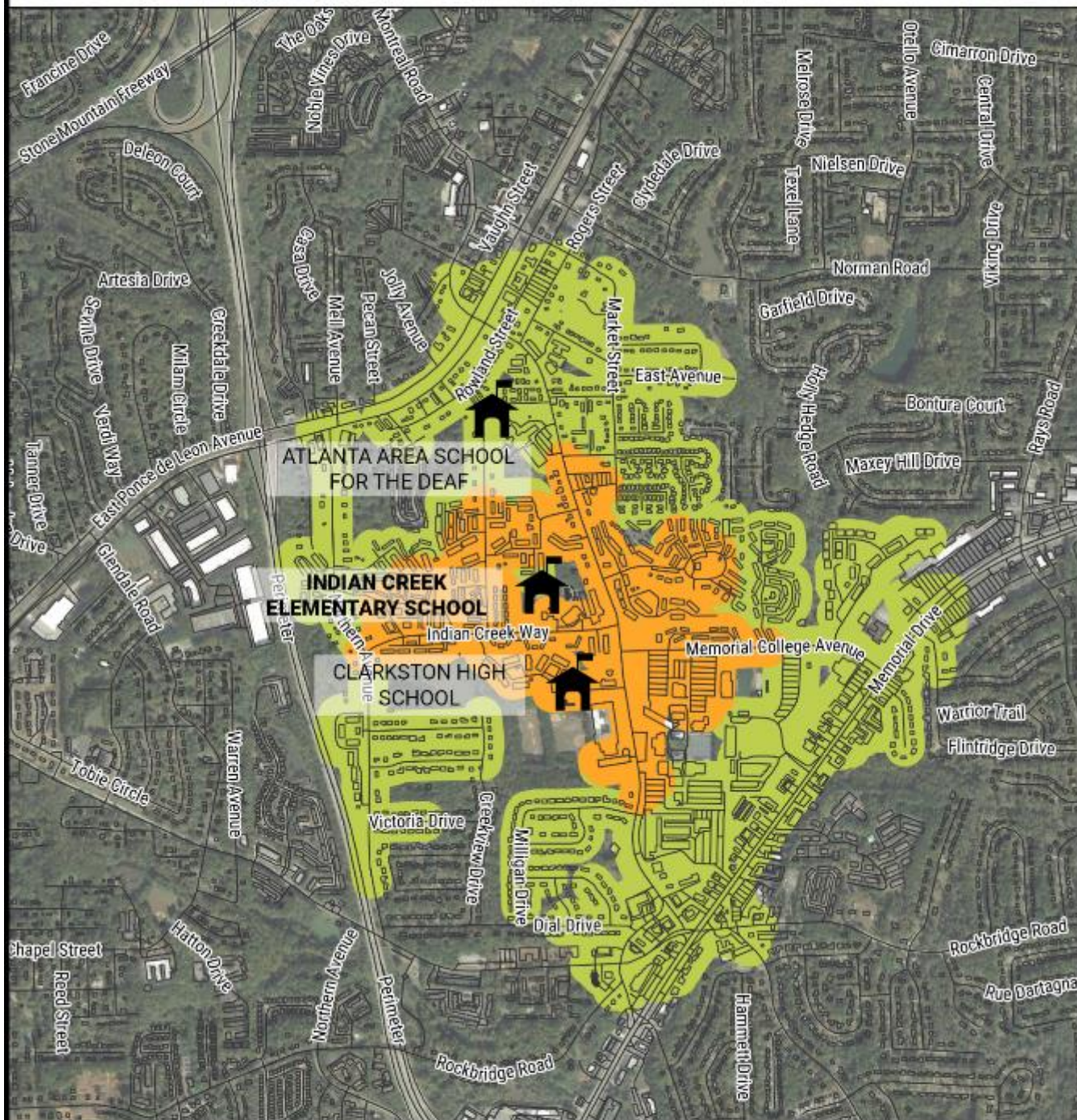


0 500 1000 ft

Clarkston High School Attendance Boundary



Indian Creek Elementary School Walkshed



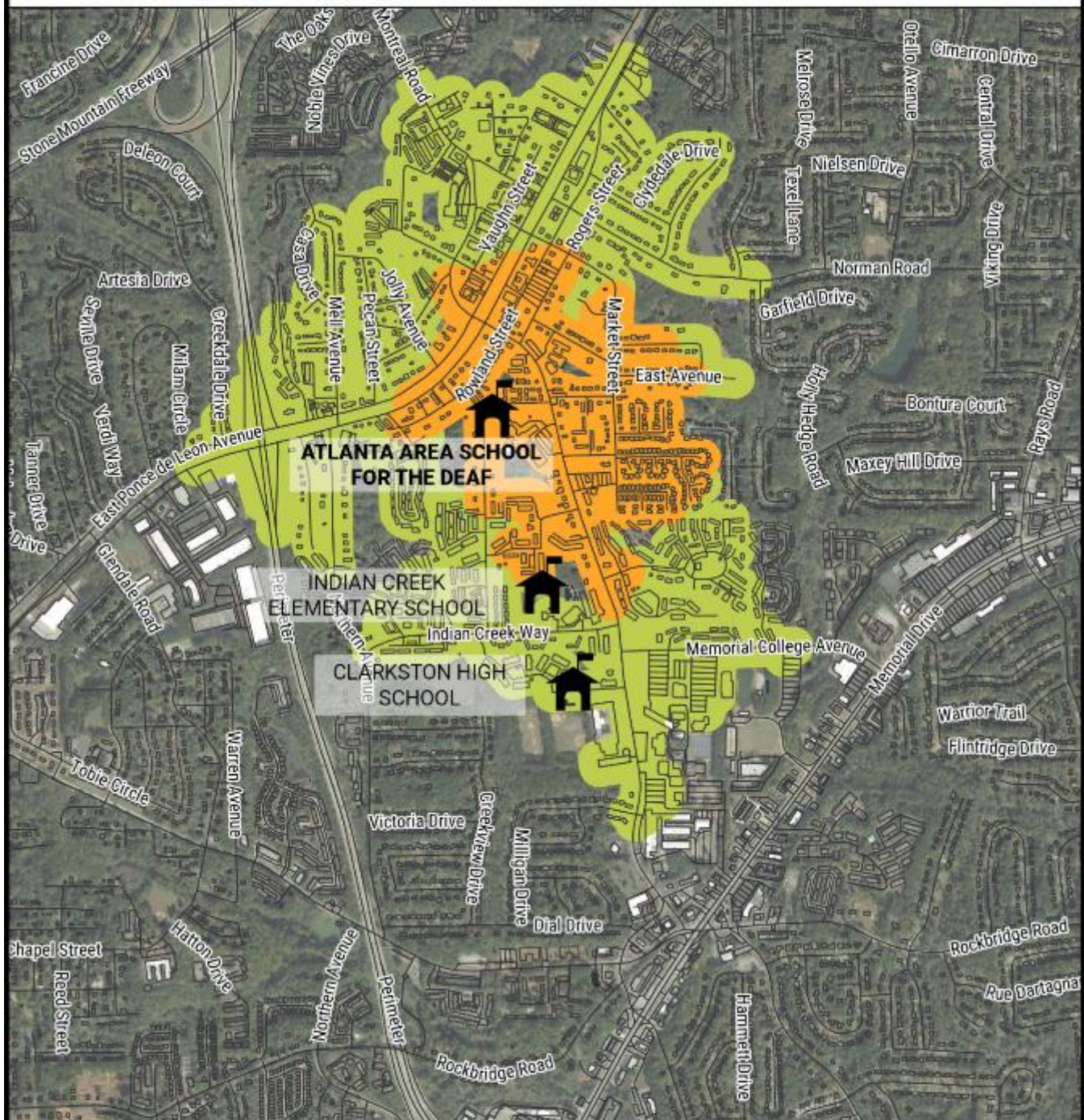
- 1/2 Mile Walkshed
- 1 Mile Walkshed



0 500 1000 ft



Atlanta Area School for the Deaf Walkshed



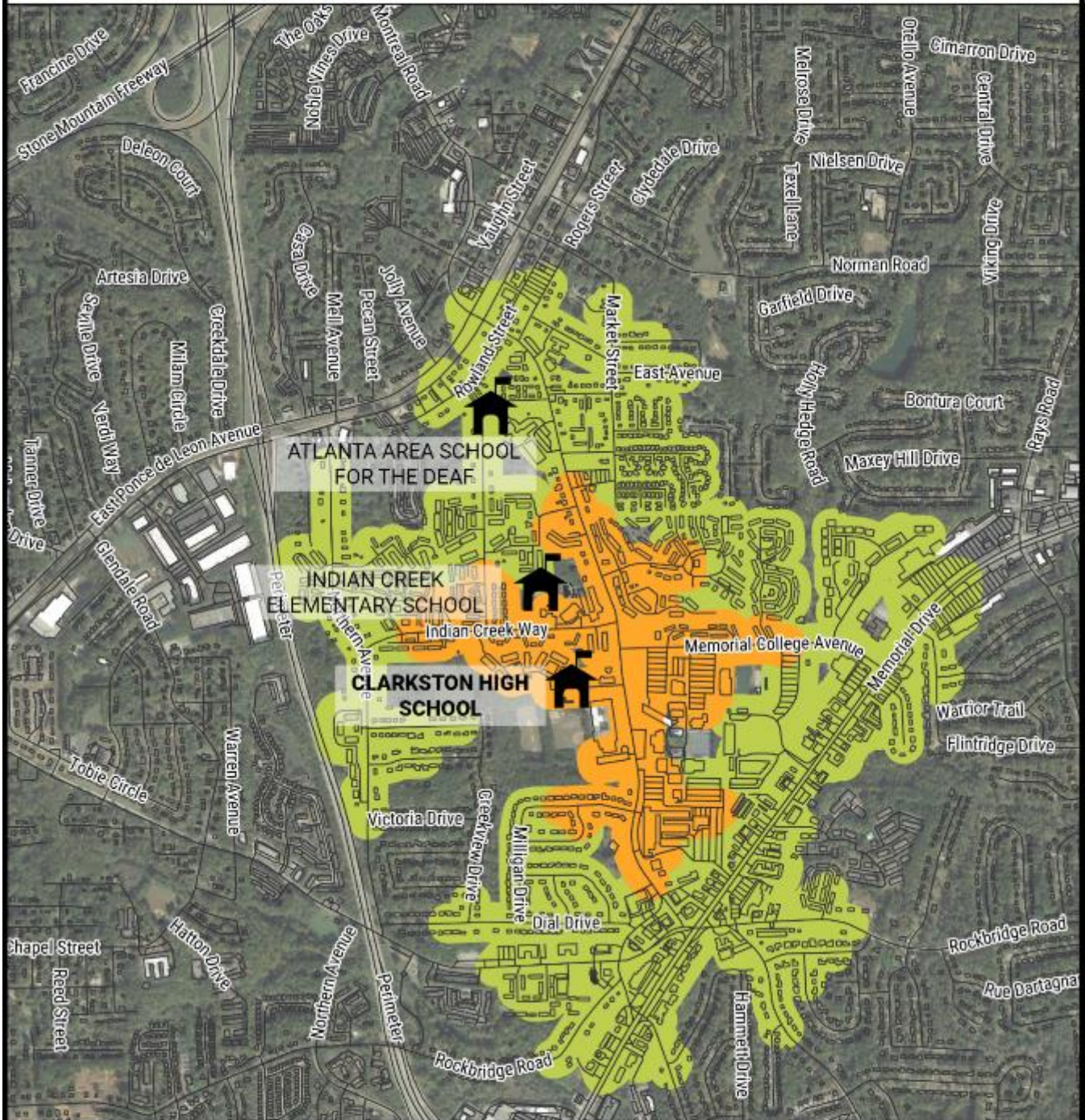
1/2 Mile Walkshed
1 Mile Walkshed



0 500 1000 ft



Clarkston High School Walkshed



1/2 Mile Walkshed
1 Mile Walkshed



0 500 1000 ft



Appendix E School RSA Recommendations

ID	Location	Recommendation	Responsible Agency	Timeframe	Safety Benefit	Cost
1	Corridor-wide	Convert two-way left turn lanes to raised medians within the existing footprint of the TWLTL as appropriate.	City of Clarkston; DeKalb County Transportation	Long Term	High	High
2	N. Indian Creek Drive & Ponce De Leon Avenue	Improve lighting for the intersection.	City of Clarkston	Intermediate Term	Moderate	Moderate
3	N. Indian Creek Drive & Church Street	Replace all pedestrian push buttons.	City of Clarkston	Intermediate Term	Moderate	Moderate
4		Improve lighting for the intersection.	City of Clarkston	Intermediate Term	Moderate	Moderate
5		Replace pedestrian signal heads, push buttons, and signs following current MUTCD guidelines.	City of Clarkston	Intermediate Term	Moderate	Moderate
6		Update 5-section left turn indications to Flashing Yellow Arrow indications with other 3-section additions as required, add reflective back plates to all signal heads. Consider supplemental traffic signal heads, including nearside signal head to the right and far side signal heads to the left.	City of Clarkston	Intermediate Term	Moderate	Moderate
7	N. Indian Creek Drive between Church St and Rowland St	Repair approximately 25 linear feet of sidewalk along SB direction of N. Indian Creek Drive.	City of Clarkston	Long Term	Low	High
8	N. Indian Creek Drive & Rowland Street	Repair approximately 25 linear feet of sidewalk at southeast quadrant of intersection, along NB direction of N. Indian Creek Drive.	City of Clarkston	Long Term	Low	High
9		Repair approximately 20 linear feet of sidewalk south of Rowland Street along SB direction of N. Indian Creek Drive.	City of Clarkston	Long Term	Low	High
10		Add bicycle warning signs (W11-1) at intersection in both directions along N. Indian Creek Drive.	City of Clarkston	Short Term	High	High
11	N. Indian Creek Drive between Rowland and Rogers St.	Repair storm drain inlets located on 75 feet south of Rowland Drive along SB direction of N. Indian Creek Drive.	City of Clarkston	Intermediate Term	High	High
12	N. Indian Creek Drive & Rogers Street	Install detectable warning surfaces on all corners of the intersection.	City of Clarkston	Intermediate Term	Moderate	Moderate
13		Reconstruct sidewalk ramps to be ADA-compliant and aligned with receiving ramps on all corners of the intersection.	City of Clarkston	Intermediate Term	Moderate	Moderate
14		Reconstruct approximately 10 linear feet of sidewalk south of driveway along SB direction of N. Indian Creek Drive.	City of Clarkston	Long Term	Low	High
15		Construct curb extension at NE corner of N. Indian Creek and Rogers Street.	City of Clarkston	Long Term	High	High
16		Trim vegetation on NE, SE corner of N. Indian Creek and Rogers Street.	City of Clarkston	Short Term	Moderate	Low

ID	Location	Recommendation	Responsible Agency	Timeframe	Safety Benefit	Cost
17		Adjacent landscaping obstructs sidewalk. Trim landscaping.	City of Clarkston	Short Term	Moderate	Low
18		Adjust height of Stop sign to be MUTCD compliant.	City of Clarkston	Short Term	Low	Low
19	North Indian Creek Drive between Rogers Street and Jackson Drive	Install painted crosswalk at Dollar General driveway.	City of Clarkston	Intermediate Term	Moderate	Moderate
20		Install detectable warning surfaces at both ramps across Dollar General driveway.	City of Clarkston	Intermediate Term	Moderate	Moderate
21		Reconstruct sidewalk ramps to be ADA-compliant and aligned with receiving ramps on both ends of Dollar General driveway.	City of Clarkston	Intermediate Term	Moderate	Moderate
22	North Indian Creek Drive & Jackson Drive	Install detectable warning surfaces at both ramps across Jackson Drive along NB direction of N. Indian Creek Drive.	DeKalb County Transportation	Intermediate Term	Moderate	Moderate
23		Install crosswalk at driveway across Jackson Drive along NB direction of N. Indian Creek Drive.	DeKalb County Transportation	Intermediate Term	Moderate	Moderate
24	North Indian Creek Drive between Jackson Drive & DeBelle St.	Adjacent landscaping obstructs sidewalk. Trim landscaping.	City of Clarkston	Short Term	Moderate	Low
25		Reconstruct sidewalk ramps at crossing of Leasing Office driveway to be ADA-compliant.	City of Clarkston	Intermediate Term	Moderate	Moderate
26		Replace pedestrian crosswalk warning signs in each direction at Mid-Block Crossing near Jackson Drive with yellow-green Pedestrian Crossing warning (W11-2) sign.	DeKalb County Transportation	Short Term	High	High
27		Improve lighting conditions at the Mid-Block Crossing near Jackson Drive.	DeKalb County Transportation	Intermediate Term	Moderate	Moderate
28		Determine appropriate safety improvement for Mid-Block Crossing near Jackson Drive: PHB or RRFB.	DeKalb County Transportation	Intermediate Term	High	High
29		Determine whether Mid-Block Crossing near Jackson Drive should be relocated due to sight distance concerns.	DeKalb County Transportation	Long Term	High	High
30		Install detectable warning surfaces at both ramps across 935 N. Indian Creek Drive / Shop N Save Food Mart Driveway along NB direction of N. Indian Creek Drive.	City of Clarkston	Intermediate Term	Moderate	Moderate
31	N. Indian Creek Drive & DeBelle Street	Reconstruct sidewalk ramps to be ADA-compliant and aligned with receiving ramps at NE & SE corner along NB direction of N. Indian Creek Drive as well as SW corner along SB direction of N. Indian Creek Drive.	City of Clarkston	Intermediate Term	Moderate	Moderate
32		Add W11-2 sign along NB direction of N. Indian Creek Drive just before the crosswalk. Replace pedestrian warning sign along SB direction of N. Indian Creek Drive at crosswalk with yellow-green Pedestrian Crossing warning (W11-2) sign.	City of Clarkston	Short Term	High	High
33		Improve lighting at intersection.	City of Clarkston	Intermediate Term	Moderate	Moderate
34		Install detectable warning surfaces at NE & SE corner along NB direction of N. Indian Creek Drive as well as SW corner along SB direction of N. Indian Creek Drive.	City of Clarkston	Intermediate Term	Moderate	Moderate

ID	Location	Recommendation	Responsible Agency	Timeframe	Safety Benefit	Cost
35		Restripe crosswalks both across Debelles Street sections and across N. Indian Creek Drive.	City of Clarkston	Short Term	Low	Low
36		Install Rectangular Rapid Flashing Beacon (RRFB) assemblies: one in each direction on both the left and right of the crosswalk, below each pedestrian crosswalk warning sign where present. Also add any needed W11-2 signs, see previous recommendation at this intersection.	City of Clarkston / DeKalb County Transportation / District 7	Intermediate Term	High	Moderate
37	N. Indian Creek Drive between Debelles St and Jamieson Place	Reconstruct approximately 1000 linear feet of sidewalk on the west side of North Indian Creek Drive south of Debelles Street. Account for dropoff on back side of sidewalk.	City of Clarkston	Long Term	Low	High
38	N. Indian Creek Drive & Jamieson Place	Reconstruct SW sidewalk ramp to be ADA-compliant and aligned with receiving ramps. Add detectable warning surface to SW sidewalk ramp.	City of Clarkston	Intermediate Term	Moderate	Moderate
39	N. Indian Creek Drive between Jamieson Place and The Lakes at Indian Creek Entrance	Regrade from Jamieson Place on west side of roadway, along SB direction of N. Indian Creek Drive approximately 400 feet to address ponding and improve drainage.	City of Clarkston	Long Term	Low	High
40		Repair approximately 15 linear feet of sidewalk on east side of roadway, north of entrance to Masjid Al-Momineen of Stone Mountain.	DeKalb County Transportation	Long Term	Low	High
41		Install detectable warning surfaces across driveway along NB direction of N. Indian Creek Drive.	DeKalb County Transportation	Intermediate Term	Moderate	Moderate
42		Relocate utility pole guy wire located along SB direction of N. Indian Creek Drive on SW corner across from driveway to Masjid Al-Momineen of Stone Mountain to not obstruct sidewalk.	DeKalb County Transportation	Short Term	High	High
43		Install pavement markings for school zone at 830 North Indian Creek Drive.	DeKalb County Transportation	Short Term	Low	Low
44		Repair sidewalk along NB direction of N. Indian Creek Drive from 823 North Indian Creek Drive approximately 75 linear feet south.	DeKalb County Transportation	Long Term	Low	High
45		Adjacent landscaping obstructs sidewalk. Trim landscaping near 823 North Indian Creek Drive along sidewalk along NB direction of N. Indian Creek Drive.	DeKalb County Transportation	Short Term	Low	Low
46		Repair exposed utility box at 823 North Indian Creek Drive along sidewalk along NB direction of N. Indian Creek Drive.	DeKalb County Transportation	Short Term	Low	Low
47		Install detectable warning surfaces at both ends of crossing across Chelsea Court Apartments driveway.	DeKalb County Transportation	Intermediate Term	Moderate	Moderate
48		Reconstruct sidewalk near at 792 N Indian Creek Drive.	DeKalb County Transportation	Long Term	Low	High
49	N. Indian Creek Drive & The Lakes at	Reconstruct/Repair curb on SB side of N. Indian Creek Drive at school crosswalk.	DeKalb County Transportation	Intermediate Term	Moderate	Moderate

ID	Location	Recommendation	Responsible Agency	Timeframe	Safety Benefit	Cost
50	Indian Creek Entrance	Reconstruct/Repair sidewalk ramps to be ADA-compliant and aligned with receiving ramps at driveway on NB side of N. Indian Creek at Lakes at Indian Creek.	DeKalb County Transportation	Intermediate Term	Moderate	Moderate
51		Install crosswalk at driveway on NB side of N. Indian Creek at Lakes at Indian Creek.	DeKalb County Transportation	Intermediate Term	Moderate	Moderate
52		Determine appropriate safety improvement for School Crossing of N. Indian Creek Drive & The Lakes at Indian Creek either: RRFB, PHB or change in Intersection Control. Consider staging improvements.	DeKalb County Transportation / GDOT District 7 Maintenance to assist	Intermediate Term	High	High
53		Install school zone pavement markings to increase awareness of school zone in NB and SB directions on N. Indian Creek Drive.	DeKalb County Transportation	Short Term	Low	Low
54		Repair/replace pedestrian median refuge and add 5-10 ft wide section on northern side to protect crosswalk from both directions.	DeKalb County Transportation	Short Term	High	Moderate
55		Install pedestrian landing area on west-side, school side to provide for queuing pedestrians.	DeKalb County Transportation / DeKalb County Schools / Indian Creek Elementary School	Intermediate Term	Moderate	Moderate
56		Reconstruct approximately 100 linear feet of sidewalk on the east side of roadway south of The Lakes driveway.	DeKalb County Transportation	Long Term	Low	High
57		Install sidewalk guy for utility pole located on east-side of roadway approximately 200 feet south of The Lakes at Indian Creek driveway	DeKalb County Transportation / Utility Provider	Short Term	Low	Low
58	N. Indian Creek Drive between the Lakes at Indian Creek Entrance to Indian Creek Way	Install approximately 1000 linear feet of curb along the east side, along NB direction of N. Indian Creek Way from the Lakes at Indian Creek Entrance to Indian Creek Way.	DeKalb County Transportation	Long Term	Moderate	High
59		Improve lighting at school drop-off / bus exit along SB direction of N. Indian Creek Way.	DeKalb County Transportation	Intermediate Term	Moderate	Moderate
60	N. Indian Creek Drive & Indian Creek Way	Improve lighting at the intersection.	DeKalb County Transportation	Intermediate Term	Moderate	Moderate
61		Repair approximately 50 linear feet of sidewalk on east side of roadway from crosswalk south along NB direction of N. Indian Creek Drive.	DeKalb County Transportation	Long Term	Low	High
62		Replace pedestrian signal heads, push buttons, and signs following current MUTCD guidelines.	DeKalb County Transportation	Intermediate Term	Moderate	Moderate
63		Traffic signal timing improvements: consider peak-time Leading Pedestrian Interval (LPI)	DeKalb County Transportation	Short Term	High	Low

ID	Location	Recommendation	Responsible Agency	Timeframe	Safety Benefit	Cost
		and implement use of crossing guard key for additional pedestrian walk time.				
64		Update 5-section left turn indications to Flashing Yellow Arrow indications with other 3-section additions as required, add reflective back plates to all signal heads. Consider supplemental traffic signal heads.	DeKalb County Transportation	Intermediate Term	Moderate	Moderate
65		Striping improvements: termination of two-way left turn lane, consider addition of bike box.	DeKalb County Transportation	Intermediate Term	Moderate	Low
66		Reconstruct sidewalk ramps to be ADA-compliant with detectable warning surfaces at all corners: NE, NW, SW.	DeKalb County Transportation	Intermediate Term	Moderate	Moderate
67		Clean debris for approximately 50 linear feet of sidewalk, beginning about 275 ft east of Jolly Ave.	DeKalb County Transportation	Short Term	Low	Low
68	Indian Creek Way & Jolly Ave	Reconstruct all three sidewalk ramps to be ADA-compliant and aligned with receiving ramps, including detectable warning surfaces.	DeKalb County Transportation	Intermediate Term	Moderate	Moderate
69	Indian Creek Way & Jolly Ave	Restripe crosswalks both across Indian Creek Way and Jolly Avenue.	DeKalb County Transportation	Short Term	Low	Low
70		Repair approximately 20 linear feet of sidewalk on east side of roadway, from the NE corner of the intersection north along the NB direction of N. Indian Creek Drive.	DeKalb County Transportation	Long Term	Low	High
71		Reconstruct sidewalk ramp on SW corner to be ADA-compliant and aligned with receiving ramps.	DeKalb County Transportation	Intermediate Term	Moderate	Moderate
72	N. Indian Creek Drive & Memorial College Avenue	Reconstruct approximately 200 linear feet of sidewalk along west side of roadway, beginning at NW corner of the intersection south along the SB direction of N. Indian Creek Drive.	DeKalb County Transportation	Long Term	Low	High
73		Improve lighting conditions on the west side of roadway, along NB direction of N. Indian Creek Drive.	DeKalb County Transportation	Intermediate Term	Moderate	Moderate
74		Restripe both crosswalks.	DeKalb County Transportation	Short Term	Low	Low
75	North Indian Creek Drive between Memorial College Avenue and Indian Creek Lane	Reconstruct 50 linear feet of sidewalk, beginning approximately 120 feet north of Indian Creek Lane along SB direction of N. Indian Creek Drive to approximately 70 feet north of Indian Creek Lane.	DeKalb County Transportation	Long Term	Low	High
76	N. Indian Creek Drive & Indian Creek Lane	Install detectable warning surfaces at NW and SW corners of the intersection.	DeKalb County Transportation	Intermediate Term	Moderate	Moderate
77		Restripe crosswalk along SB direction of North Indian Creek Drive across Indian Creek Lane.	DeKalb County Transportation	Short Term	Low	Low
78	N. Indian Creek Drive & Clarkston High	Install detectable warning surfaces at NW and SW corners of the intersection.	DeKalb County Transportation	Intermediate Term	Moderate	Moderate

ID	Location	Recommendation	Responsible Agency	Timeframe	Safety Benefit	Cost
79	School, Northern Entrance	Restripe crosswalk along SB direction of North Indian Creek Drive across Indian Creek Lane.	DeKalb County Transportation	Short Term	Low	Low
80	N. Indian Creek Drive between Clarkston High School, Northern Entrance and Southern Entrance / Georgia State Exit Driveway	Repair approximately 25 linear feet of sidewalk, starting 80 feet south of Clarkston High School, Northern Entrance along SB direction of N. Indian Creek Drive.	DeKalb County Transportation	Long Term	Low	High
81		Replace Pedestrian Crossing Sign (W11-2) along SB direction of N. Indian Creek Drive at Mid-Block Crossing in front of Clarkston High School. Add State Law to Yield (R1-6) with SCHOOL (S4-3P) in-street sign at median.	DeKalb County Transportation	Short Term	Moderate	Low
82		Determine appropriate safety improvement for at Mid-Block Crossing in front of Clarkston High School either: RRFB, PHB or change in Intersection Control.	DeKalb County Transportation / GDOT District 7 Maintenance to assist	Intermediate Term	High	High
83		Repair approximately 30 linear feet of sidewalk, starting approximately 200 feet south of Clarkston High School, Northern Entrance along SB direction of N. Indian Creek Drive.	DeKalb County Transportation	Long Term	Low	High
84		Repair approximately 50 linear feet of sidewalk, from approximately 350 feet north of Clarkston High School southern entrance to 300 feet north of the entrance along SB direction of N. Indian Creek Drive.	DeKalb County Transportation	Long Term	Low	High
85		Repair approximately 20 linear feet of sidewalk, approximately 170 feet north of Clarkston High School southern entrance along SB direction of N. Indian Creek Drive.	DeKalb County Transportation	Long Term	Low	High
86	N. Indian Creek Drive between Georgia State University Clarkston Campus Exit Driveway and Milligan Drive.	Reconstruct both sidewalk ramps at Georgia State University Clarkston Campus exit driveway along NB direction of N. Indian Creek Drive to be ADA-compliant and aligned with receiving ramps.	DeKalb County Transportation	Intermediate Term	Moderate	Moderate
87		Install crosswalk at Georgia State University Clarkston Campus exit driveway along NB direction of N. Indian Creek Drive.	DeKalb County Transportation	Intermediate Term	Moderate	Moderate
88		Install Type 1 arrow at Georgia State University Clarkston Campus exit driveway in direction of one-way flow.	DeKalb County Transportation	Short Term	Moderate	Low
89		Reconstruct both sidewalk ramps at Georgia State University Clarkston Campus exit driveway along NB direction of N. Indian Creek Drive to be ADA-compliant and aligned with receiving ramps.	DeKalb County Transportation	Intermediate Term	Moderate	Moderate
90		Consider removing direct sidewalk path from school entrance to old crosswalk, and enhance direct route to new Mid-Block Crossing.	DeKalb County School District	Intermediate Term	Moderate	Moderate
91		Improve lighting along west side, SB direction of N. Indian Creek Drive approximately 150 feet south of Clarkston High School southern entrance.	DeKalb County Transportation	Intermediate Term	Moderate	Moderate

ID	Location	Recommendation	Responsible Agency	Timeframe	Safety Benefit	Cost
92		Repair storm drain inlet 300 feet north of Milligan Drive on west side, SB direction of N. Indian Creek Drive.	DeKalb County Transportation	Intermediate Term	Low	Moderate
93	N. Indian Creek Drive between Milligan Drive and SR 10 / Memorial	Adjust pedestrian warning sign at mid-block crossing south of Milligan Drive along SB direction of N. Indian Creek Drive to face southbound traffic. Add Add State Law to Yield (R1-6) in-street sign at median.	DeKalb County Transportation	Short Term	Low	Low
94		Reconstruct sidewalk ramps to be ADA-compliant and aligned with receiving ramps along driveway crossings on east side, NB direction of N. Indian Creek Drive.	DeKalb County Transportation	Intermediate Term	Moderate	Moderate
95		Determine appropriate safety improvement at mid-block crossing south of Milligan Drive along SB direction of N. Indian Creek Drive either: RRFB, PHB.	Dekalb County Transportation	Long Term	High	High
96		Construct 10 sidewalk ramps to be ADA-compliant and aligned with receiving ramps along east side of roadway.	DeKalb County Transportation	Long Term	Moderate	High
97		Construct approximately 750 feet of new sidewalk from near 452 North Indian Creek Drive to connect existing sidewalks along east side, SB direction N. Indian Creek Drive to Memorial Drive.	DeKalb County Transportation	Long Term	Low	High
98		Repair approximately 200 linear feet of sidewalk along west side of roadway, SB direction of N. Indian Creek Drive from cemetery to approximately 450 N. Indian Creek Drive.	DeKalb County Transportation	Long Term	Low	High
99	Rockbridge Road, along EB side of Rockbridge from N. Indian Creek Drive to SR 10 / Memorial	Construct approximately 1000 linear feet of sidewalk along south side of roadway, EB direction along Rockbridge Rd from N. Indian Creek Drive to SR 10 / Memorial	DeKalb County Transportation	Long Term	Moderate	High
100	Rockbridge Road, along WB side of Rockbridge from SR 10 to N. Indian Creek Drive	Construct approximately 75 linear feet of sidewalk along north side of roadway to connect sidewalk from QuikTrip to existing sidewalk.	DeKalb County Transportation	Long Term	Moderate	High
101	N. Indian Creek Drive Ext & Rockbridge Road SW	Install detectable warning surfaces in median refuge.	DeKalb County Transportation	Intermediate Term	Moderate	Moderate
102	N. Indian Creek Drive & N Decatur Rd / Rockbridge Road SW	Improve lighting in this location, especially the SE quadrant.	DeKalb County Transportation	Intermediate Term	Moderate	Moderate
103		Update 5-section left turn indications to Flashing Yellow Arrow indications with other 3-section additions as required, add reflective back plates to all signal heads at the intersection of N. Indian Creek Drive & N Decatur Rd / Rockbridge Road SW	DeKalb County Transportation	Intermediate Term	Moderate	Moderate

ID	Location	Recommendation	Responsible Agency	Timeframe	Safety Benefit	Cost
104		Add pedestrian warning sign (W11-2) along NB direction of N. Indian Creek Drive approximately 125 ft south of the intersection of N. Indian Creek Drive & N Decatur Rd / Rockbridge Road SW	DeKalb County Transportation	Short Term	Moderate	Low
105		Install curb extensions and tighten turn radii at NW and SE corners at the intersection of N. Indian Creek Drive & N Decatur Rd / Rockbridge Road SW	DeKalb County Transportation	Long Term	High	High
106	N. Indian Creek Drive & SR 10 / Memorial Drive	Improve lighting to improve visibility of pedestrians in crosswalks.	GDOT District 7 Utilities / DeKalb County	Intermediate Term	Moderate	Moderate

Appendix F School RSA Prioritized Recommendations

ID	Location	Recommendation	Responsible Agency	Timeframe	Safety Benefit	Cost
54	N. Indian Creek Drive & The Lakes at Indian Creek Entrance	Repair/replace pedestrian median refuge and add 5-10 ft wide section on northern side to protect crosswalk from both directions.	DeKalb County Transportation	Short Term	High	Moderate
10	N. Indian Creek Drive & Rowland Street	Add bicycle warning signs (W11-1) at intersection in both directions along N. Indian Creek Drive.	City of Clarkston	Short Term	High	High
26	North Indian Creek Drive between Jackson Drive & Debelles St.	Replace pedestrian crosswalk warning signs in each direction at Mid-Block Crossing near Jackson Drive with yellow-green Pedestrian Crossing warning (W11-2) sign.	DeKalb County Transportation	Short Term	High	High
32	N. Indian Creek Drive & Debelles Street	Add W11-2 sign along NB direction of N. Indian Creek Drive just before the crosswalk. Replace pedestrian warning sign along SB direction of N. Indian Creek Drive at crosswalk with yellow-green Pedestrian Crossing warning (W11-2) sign.	City of Clarkston	Short Term	High	High
42	N. Indian Creek Drive between Jamieson Place and The Lakes at Indian Creek Entrance	Relocate utility pole guy wire located along SB direction of N. Indian Creek Drive on SW corner across from driveway to Masjid Al-Momineen of Stone Mountain to unobstruct sidewalk.	DeKalb County Transportation	Short Term	High	High
63	N. Indian Creek Drive & Indian Creek Way	Traffic signal timing improvements: consider peak-time Leading Pedestrian Interval (LPI) and implement use of crossing guard key for additional pedestrian walk time.	DeKalb County Transportation	Short Term	High	Low
16	N. Indian Creek Drive & Rogers Street	Trim vegetation on NE, SE corner of N. Indian Creek and Rogers Street.	City of Clarkston	Short Term	Moderate	Low
17	N. Indian Creek Drive & Rogers Street	Adjacent landscaping obstructs sidewalk. Trim landscaping.	City of Clarkston	Short Term	Moderate	Low
24	North Indian Creek Drive between Jackson Drive & Debelles St.	Adjacent landscaping obstructs sidewalk. Trim landscaping.	City of Clarkston	Short Term	Moderate	Low
81	N. Indian Creek Drive between Clarkston High School, Northern Entrance and Southern Entrance / Georgia State Exit Driveway	Replace Pedestrian Crossing Sign (W11-2) along SB direction of N. Indian Creek Drive at Mid-Block Crossing in front of Clarkston High School. Add State Law to Yield (R1-6) with SCHOOL (S4-3P) in-street sign at median.	DeKalb County Transportation	Short Term	Moderate	Low
88	N. Indian Creek Drive between Georgia State University Clarkston Campus Exit Driveway and Milligan Drive	Install Type 1 arrow at Georgia State University Clarkston Campus exit driveway in direction of one-way flow.	DeKalb County Transportation	Short Term	Moderate	Low

ID	Location	Recommendation	Responsible Agency	Timeframe	Safety Benefit	Cost
104	N. Indian Creek Drive & N Decatur Rd / Rockbridge Road SW	Add pedestrian warning sign (W11-2) along NB direction of N. Indian Creek Drive approximately 125 ft south of the intersection of N. Indian Creek Drive & N Decatur Rd / Rockbridge Road SW	DeKalb County Transportation	Short Term	Moderate	Low
18	N. Indian Creek Drive & Rogers Street	Adjust height of Stop sign to be MUTCD compliant.	City of Clarkston	Short Term	Low	Low
35	N. Indian Creek Drive & DeBelle Street	Restripe crosswalks both across DeBelle Street sections and across N. Indian Creek Drive.	City of Clarkston	Short Term	Low	Low
43	N. Indian Creek Drive between Jamieson Place and The Lakes at Indian Creek Entrance	Install pavement markings for school zone at 830 North Indian Creek Drive.	DeKalb County Transportation	Short Term	Low	Low
45	N. Indian Creek Drive between Jamieson Place and The Lakes at Indian Creek Entrance	Adjacent landscaping obstructs sidewalk. Trim landscaping near 823 North Indian Creek Drive along sidewalk along NB direction of N. Indian Creek Drive.	DeKalb County Transportation	Short Term	Low	Low
46	N. Indian Creek Drive between Jamieson Place and The Lakes at Indian Creek Entrance	Repair exposed utility box at 823 North Indian Creek Drive along sidewalk along NB direction of N. Indian Creek Drive.	DeKalb County Transportation	Short Term	Low	Low
53	N. Indian Creek Drive & The Lakes at Indian Creek Entrance	Install school zone pavement markings to increase awareness of school zone in NB and SB directions on N. Indian Creek Drive.	DeKalb County Transportation	Short Term	Low	Low
57	N. Indian Creek Drive & The Lakes at Indian Creek Entrance	Install sidewalk guy for utility pole located on east-side of roadway approximately 200 feet south of The Lakes at Indian Creek driveway	DeKalb County Transportation / Utility Provider	Short Term	Low	Low
67	N. Indian Creek Drive & Indian Creek Way	Clean debris for approximately 50 linear feet of sidewalk, beginning about 275 ft east of Jolly Ave.	DeKalb County Transportation	Short Term	Low	Low
69	Indian Creek Way & Jolly Ave	Restripe crosswalks both across Indian Creek Way and Jolly Avenue.	DeKalb County Transportation	Short Term	Low	Low
74	N. Indian Creek Drive & Memorial College Avenue	Restripe both crosswalks.	DeKalb County Transportation	Short Term	Low	Low
77	N. Indian Creek Drive & Indian Creek Lane	Restripe crosswalk along SB direction of North Indian Creek Drive across Indian Creek Lane.	DeKalb County Transportation	Short Term	Low	Low
79	N. Indian Creek Drive & Clarkston High School, Northern Entrance	Restripe crosswalk along SB direction of North Indian Creek Drive across Indian Creek Lane.	DeKalb County Transportation	Short Term	Low	Low
93	N. Indian Creek Drive between Milligan Drive and SR 10 / Memorial	Adjust pedestrian warning sign at mid-block crossing south of Milligan Drive along SB direction of N. Indian Creek Drive to face southbound traffic. Add Add State Law to Yield (R1-6) in-street sign at median.	DeKalb County Transportation	Short Term	Low	Low

ID	Location	Recommendation	Responsible Agency	Timeframe	Safety Benefit	Cost
36	N. Indian Creek Drive & DeBelle Street	Install Rectangular Rapid Flashing Beacon (RRFB) assemblies: one in each direction on both the left and right of the crosswalk, below each pedestrian crosswalk warning sign where present. Also add any needed W11-2 signs, see previous recommendation at this intersection.	City of Clarkston / DeKalb County Transportation / District 7	Intermediate Term	High	Moderate
11	N. Indian Creek Drive between Rowland and Rogers St.	Repair storm drain inlets located on 75 feet south of Rowland Drive along SB direction of N. Indian Creek Drive.	City of Clarkston	Intermediate Term	High	High
28	North Indian Creek Drive between Jackson Drive & DeBelle St.	Determine appropriate safety improvement for Mid-Block Crossing near Jackson Drive: PHB or RRFB.	City of Clarkston	Intermediate Term	High	High
52	N. Indian Creek Drive & The Lakes at Indian Creek Entrance	Determine appropriate safety improvement for School Crossing of N. Indian Creek Drive & The Lakes at Indian Creek either: RRFB, PHB or change in Intersection Control. Consider staging improvements.	DeKalb County Transportation / GDOT District 7 Maintenance to assist	Intermediate Term	High	High
82	N. Indian Creek Drive between Clarkston High School, Northern Entrance and Southern Entrance / Georgia State Exit Driveway	Determine appropriate safety improvement for at Mid-Block Crossing in front of Clarkston High School either: RRFB, PHB or change in Intersection Control.	DeKalb County Transportation / GDOT District 7 Maintenance to assist	Intermediate Term	High	High
2	N. Indian Creek Drive & Ponce De Leon Avenue	Improve lighting for the intersection.	City of Clarkston	Intermediate Term	Moderate	Moderate
3	N. Indian Creek Drive & Church Street	Replace all pedestrian push buttons.	City of Clarkston	Intermediate Term	Moderate	Moderate
4	N. Indian Creek Drive & Church Street	Improve lighting for the intersection.	City of Clarkston	Intermediate Term	Moderate	Moderate
5	N. Indian Creek Drive & Church Street	Replace pedestrian signal heads, push buttons, and signs following current MUTCD guidelines.	City of Clarkston	Intermediate Term	Moderate	Moderate
6	N. Indian Creek Drive & Church Street	Update 5-section left turn indications to Flashing Yellow Arrow indications with other 3-section additions as required, add reflective back plates to all signal heads. Consider supplemental traffic signal heads, including nearside signal head to the right and far side signal heads to the left.	City of Clarkston	Intermediate Term	Moderate	Moderate
12	N. Indian Creek Drive & Rogers Street	Install detectable warning surfaces on all corners of the intersection.	City of Clarkston	Intermediate Term	Moderate	Moderate
13	N. Indian Creek Drive & Rogers Street	Reconstruct sidewalk ramps to be ADA-compliant and aligned with receiving ramps on all corners of the intersection.	City of Clarkston	Intermediate Term	Moderate	Moderate

ID	Location	Recommendation	Responsible Agency	Timeframe	Safety Benefit	Cost
19	North Indian Creek Drive between Rogers Street and Jackson Drive	Install painted crosswalk at Dollar General driveway.	City of Clarkston	Intermediate Term	Moderate	Moderate
20	North Indian Creek Drive between Rogers Street and Jackson Drive	Install detectable warning surfaces at both ramps across Dollar General driveway.	City of Clarkston	Intermediate Term	Moderate	Moderate
21	North Indian Creek Drive between Rogers Street and Jackson Drive	Reconstruct sidewalk ramps to be ADA-compliant and aligned with receiving ramps on both ends of Dollar General driveway.	City of Clarkston	Intermediate Term	Moderate	Moderate
22	North Indian Creek Drive & Jackson Drive	Install detectable warning surfaces at both ramps across Jackson Drive along NB direction of N. Indian Creek Drive.	City of Clarkston	Intermediate Term	Moderate	Moderate
23	North Indian Creek Drive & Jackson Drive	Install crosswalk at driveway across Jackson Drive along NB direction of N. Indian Creek Drive.	City of Clarkston	Intermediate Term	Moderate	Moderate
25	North Indian Creek Drive between Jackson Drive & Debelle St.	Reconstruct sidewalk ramps at crossing of Leasing Office driveway to be ADA-compliant.	City of Clarkston	Intermediate Term	Moderate	Moderate
27	North Indian Creek Drive between Jackson Drive & Debelle St.	Improve lighting conditions at the Mid-Block Crossing near Jackson Drive.	City of Clarkston	Intermediate Term	Moderate	Moderate
30	North Indian Creek Drive between Jackson Drive & Debelle St.	Install detectable warning surfaces at both ramps across 935 N. Indian Creek Drive / Shop N Save Food Mart Driveway along NB direction of N. Indian Creek Drive.	City of Clarkston	Intermediate Term	Moderate	Moderate
31	N. Indian Creek Drive & Debelle Street	Reconstruct sidewalk ramps to be ADA-compliant and aligned with receiving ramps at NE & SE corner along NB direction of N. Indian Creek Drive as well as SW corner along SB direction of N. Indian Creek Drive.	City of Clarkston	Intermediate Term	Moderate	Moderate
33	N. Indian Creek Drive & Debelle Street	Improve lighting at intersection.	City of Clarkston	Intermediate Term	Moderate	Moderate
34	N. Indian Creek Drive & Debelle Street	Install detectable warning surfaces at NE & SE corner along NB direction of N. Indian Creek Drive as well as SW corner along SB direction of N. Indian Creek Drive.	City of Clarkston	Intermediate Term	Moderate	Moderate
38	N. Indian Creek Drive & Jamieson Place	Reconstruct SW sidewalk ramp to be ADA-compliant and aligned with receiving ramps. Add detectable warning surface to SW sidewalk ramp.	City of Clarkston	Intermediate Term	Moderate	Moderate
41	N. Indian Creek Drive between Jamieson Place and The Lakes at Indian Creek Entrance	Install detectable warning surfaces across driveway along NB direction of N. Indian Creek Drive.	DeKalb County Transportation	Intermediate Term	Moderate	Moderate

ID	Location	Recommendation	Responsible Agency	Timeframe	Safety Benefit	Cost
47	N. Indian Creek Drive between Jamieson Place and The Lakes at Indian Creek Entrance	Install detectable warning surfaces at both ends of crossing across Chelsea Court Apartments driveway.	DeKalb County Transportation	Intermediate Term	Moderate	Moderate
49	N. Indian Creek Drive & The Lakes at Indian Creek Entrance	Reconstruct/Repair curb on SB side of N. Indian Creek Drive at school crosswalk.	DeKalb County Transportation	Intermediate Term	Moderate	Moderate
50	N. Indian Creek Drive & The Lakes at Indian Creek Entrance	Reconstruct/Repair sidewalk ramps to be ADA-compliant and aligned with receiving ramps at driveway on NB side of N. Indian Creek at Lakes at Indian Creek.	DeKalb County Transportation	Intermediate Term	Moderate	Moderate
51	N. Indian Creek Drive & The Lakes at Indian Creek Entrance	Install crosswalk at driveway on NB side of N. Indian Creek at Lakes at Indian Creek.	DeKalb County Transportation	Intermediate Term	Moderate	Moderate
55	N. Indian Creek Drive & The Lakes at Indian Creek Entrance	Install pedestrian landing area on west-side, school side to provide for queuing pedestrians.	DeKalb County Transportation / DeKalb County Schools / Indian Creek Elementary School	Intermediate Term	Moderate	Moderate
59	N. Indian Creek Drive between the Lakes at Indian Creek Entrance to Indian Creek Way	Improve lighting at school drop-off / bus exit along SB direction of N. Indian Creek Way.	DeKalb County Transportation	Intermediate Term	Moderate	Moderate
60	N. Indian Creek Drive & Indian Creek Way	Improve lighting at the intersection.	DeKalb County Transportation	Intermediate Term	Moderate	Moderate
62	N. Indian Creek Drive & Indian Creek Way	Replace pedestrian signal heads, push buttons, and signs following current MUTCD guidelines.	DeKalb County Transportation	Intermediate Term	Moderate	Moderate
64	N. Indian Creek Drive & Indian Creek Way	Update 5-section left turn indications to Flashing Yellow Arrow indications with other 3-section additions as required, add reflective back plates to all signal heads. Consider supplemental traffic signal heads.	DeKalb County Transportation	Intermediate Term	Moderate	Moderate
66	N. Indian Creek Drive & Indian Creek Way	Reconstruct sidewalk ramps to be ADA-compliant with detectable warning surfaces at all corners: NE, NW, SW.	DeKalb County Transportation	Intermediate Term	Moderate	Moderate
68	Indian Creek Way & Jolly Ave	Reconstruct all three sidewalk ramps to be ADA-compliant and aligned with receiving ramps, including detectable warning surfaces.	DeKalb County Transportation	Intermediate Term	Moderate	Moderate
71	N. Indian Creek Drive & Memorial College Avenue	Reconstruct sidewalk ramp on SW corner to be ADA-compliant and aligned with receiving ramps.	DeKalb County Transportation	Intermediate Term	Moderate	Moderate
73	N. Indian Creek Drive & Memorial College Avenue	Improve lighting conditions on the west side of roadway, along NB direction of N. Indian Creek Drive.	DeKalb County Transportation	Intermediate Term	Moderate	Moderate
76	N. Indian Creek Drive & Indian Creek Lane	Install detectable warning surfaces at NW and SW corners of the intersection.	DeKalb County Transportation	Intermediate Term	Moderate	Moderate

ID	Location	Recommendation	Responsible Agency	Timeframe	Safety Benefit	Cost
78	N. Indian Creek Drive & Clarkston High School, Northern Entrance	Install detectable warning surfaces at NW and SW corners of the intersection.	DeKalb County Transportation	Intermediate Term	Moderate	Moderate
86	N. Indian Creek Drive between Georgia State University Clarkston Campus Exit Driveway and Milligan Drive	Reconstruct both sidewalk ramps at Georgia State University Clarkston Campus exit driveway along NB direction of N. Indian Creek Drive to be ADA-compliant and aligned with receiving ramps.	DeKalb County Transportation	Intermediate Term	Moderate	Moderate
87	N. Indian Creek Drive between Georgia State University Clarkston Campus Exit Driveway and Milligan Drive	Install crosswalk at Georgia State University Clarkston Campus exit driveway along NB direction of N. Indian Creek Drive.	DeKalb County Transportation	Intermediate Term	Moderate	Moderate
89	N. Indian Creek Drive between Georgia State University Clarkston Campus Exit Driveway and Milligan Drive	Reconstruct both sidewalk ramps at Georgia State University Clarkston Campus exit driveway along NB direction of N. Indian Creek Drive to be ADA-compliant and aligned with receiving ramps.	DeKalb County Transportation	Intermediate Term	Moderate	Moderate
90	N. Indian Creek Drive between Georgia State University Clarkston Campus Exit Driveway and Milligan Drive	Consider removing direct sidewalk path from school entrance to old crosswalk, and enhance direct route to new Mid-Block Crossing.	DeKalb County School District	Intermediate Term	Moderate	Moderate
91	N. Indian Creek Drive between Georgia State University Clarkston Campus Exit Driveway and Milligan Drive	Improve lighting along west side, SB direction of N. Indian Creek Drive approximately 150 feet south of Clarkston High School southern entrance.	DeKalb County Transportation	Intermediate Term	Moderate	Moderate
94	N. Indian Creek Drive between Milligan Drive and SR 10 / Memorial	Reconstruct sidewalk ramps to be ADA-compliant and aligned with receiving ramps along driveway crossings on east side, NB direction of N. Indian Creek Drive.	DeKalb County Transportation	Intermediate Term	Moderate	Moderate
101	N. Indian Creek Drive Ext & Rockbridge Road SW	Install detectable warning surfaces in median refuge.	DeKalb County Transportation	Intermediate Term	Moderate	Moderate
102	N. Indian Creek Drive & N Decatur Rd / Rockbridge Road SW	Improve lighting in this location, especially the SE quadrant.	DeKalb County Transportation	Intermediate Term	Moderate	Moderate
103	N. Indian Creek Drive & N Decatur Rd / Rockbridge Road SW	Update 5-section left turn indications to Flashing Yellow Arrow indications with other 3-section additions as required, add reflective back plates to all signal heads at the intersection of N. Indian Creek Drive & N Decatur Rd / Rockbridge Road SW	DeKalb County Transportation	Intermediate Term	Moderate	Moderate
106	N. Indian Creek Drive & SR 10 / Memorial Drive	Improve lighting to improve visibility of pedestrians in crosswalks.	GDOT District 7 Utilities / DeKalb County	Intermediate Term	Moderate	Moderate

ID	Location	Recommendation	Responsible Agency	Timeframe	Safety Benefit	Cost
65	N. Indian Creek Drive & Indian Creek Way	Striping improvements: termination of two-way left turn lane, consider addition of bike box.	DeKalb County Transportation	Intermediate Term	Moderate	Low
92	N. Indian Creek Drive between Georgia State University Clarkston Campus Exit Driveway and Milligan Drive	Repair storm drain inlet 300 feet north of Milligan Drive on west side, SB direction of N. Indian Creek Drive.	DeKalb County Transportation	Intermediate Term	Low	Moderate
1	Corridor-wide	Convert two-way left turn lanes to raised medians within the existing footprint of the TWLTL as appropriate.	City of Clarkston; DeKalb County Transportation	Long Term	High	High
15	N. Indian Creek Drive & Rogers Street	Construct curb extension at NE corner of N. Indian Creek and Rogers Street.	City of Clarkston	Long Term	High	High
29	North Indian Creek Drive between Jackson Drive & Debelles St.	Determine whether Mid-Block Crossing near Jackson Drive should be relocated due to sight distance concerns.	City of Clarkston	Long Term	High	High
95	N. Indian Creek Drive between Milligan Drive and SR 10 / Memorial	Determine appropriate safety improvement at mid-block crossing south of Milligan Drive along SB direction of N. Indian Creek Drive either: RRFB, PHB.	DeKalb County Transportation	Long Term	High	High
105	N. Indian Creek Drive & N Decatur Rd / Rockbridge Road SW	Install curb extensions and tighten turn radii at NW and SE corners at the intersection of N. Indian Creek Drive & N Decatur Rd / Rockbridge Road SW	DeKalb County Transportation	Long Term	High	High
58	N. Indian Creek Drive between the Lakes at Indian Creek Entrance to Indian Creek Way	Install approximately 1000 linear feet of curb along the east side, along NB direction of N. Indian Creek Way from the Lakes at Indian Creek Entrance to Indian Creek Way.	DeKalb County Transportation	Long Term	Moderate	High
96	N. Indian Creek Drive between Milligan Drive and SR 10 / Memorial	Construct 10 sidewalk ramps to be ADA-compliant and aligned with receiving ramps along east side of roadway.	DeKalb County Transportation	Long Term	Moderate	High
99	Rockbridge Road, along EB side of Rockbridge from N. Indian Creek Drive to SR 10 / Memorial	Construct approximately 1000 linear feet of sidewalk along south side of roadway, EB direction along Rockbridge Rd from N. Indian Creek Drive to SR 10 / Memorial	DeKalb County Transportation	Long Term	Moderate	High
100	Rockbridge Road, along WB side of Rockbridge from SR 10 to N. Indian Creek Drive	Construct approximately 75 linear feet of sidewalk along north side of roadway to connect sidewalk from QuikTrip to existing sidewalk.	DeKalb County Transportation	Long Term	Moderate	High
7	N. Indian Creek Drive between Church St and Rowland St	Repair approximately 25 linear feet of sidewalk along SB direction of N. Indian Creek Drive.	City of Clarkston	Long Term	Low	High
8	N. Indian Creek Drive & Rowland Street	Repair approximately 25 linear feet of sidewalk at southeast quadrant of intersection, along NB direction of N. Indian Creek Drive.	City of Clarkston	Long Term	Low	High

ID	Location	Recommendation	Responsible Agency	Timeframe	Safety Benefit	Cost
9	N. Indian Creek Drive & Rowland Street	Repair approximately 20 linear feet of sidewalk south of Rowland Street along SB direction of N. Indian Creek Drive.	City of Clarkston	Long Term	Low	High
14	N. Indian Creek Drive & Rogers Street	Reconstruct approximately 10 linear feet of sidewalk south of driveway along SB direction of N. Indian Creek Drive.	City of Clarkston	Long Term	Low	High
37	N. Indian Creek Drive between DeBelle St and Jamieson Place	Reconstruct approximately 1000 linear feet of sidewalk on the west side of North Indian Creek Drive south of DeBelle Street. Account for dropoff on back side of sidewalk.	City of Clarkston	Long Term	Low	High
39	N. Indian Creek Drive between Jamieson Place and The Lakes at Indian Creek Entrance	Regrade from Jamieson Place on west side of roadway, along SB direction of N. Indian Creek Drive approximately 400 feet to address ponding and improve drainage.	City of Clarkston	Long Term	Low	High
40	N. Indian Creek Drive between Jamieson Place and The Lakes at Indian Creek Entrance	Repair approximately 15 linear feet of sidewalk on east side of roadway, north of entrance to Masjid Al-Momineen of Stone Mountain.	DeKalb County Transportation	Long Term	Low	High
44	N. Indian Creek Drive between Jamieson Place and The Lakes at Indian Creek Entrance	Repair sidewalk along NB direction of N. Indian Creek Drive from 823 North Indian Creek Drive approximately 75 linear feet south.	DeKalb County Transportation	Long Term	Low	High
48	N. Indian Creek Drive between Jamieson Place and The Lakes at Indian Creek Entrance	Reconstruct sidewalk near at 792 N Indian Creek Drive.	DeKalb County Transportation	Long Term	Low	High
56	N. Indian Creek Drive & The Lakes at Indian Creek Entrance	Reconstruct approximately 100 linear feet of sidewalk on the east side of roadway south of The Lakes driveway.	DeKalb County Transportation	Long Term	Low	High
61	N. Indian Creek Drive & Indian Creek Way	Repair approximately 50 linear feet of sidewalk on east side of roadway from crosswalk south along NB direction of N. Indian Creek Drive.	DeKalb County Transportation	Long Term	Low	High
70	N. Indian Creek Drive & Memorial College Avenue	Repair approximately 20 linear feet of sidewalk on east side of roadway, from the NE corner of the intersection north along the NB direction of N. Indian Creek Drive.	DeKalb County Transportation	Long Term	Low	High
72	N. Indian Creek Drive & Memorial College Avenue	Reconstruct approximately 200 linear feet of sidewalk along west side of roadway, beginning at NW corner of the intersection south along the SB direction of N. Indian Creek Drive.	DeKalb County Transportation	Long Term	Low	High
75	North Indian Creek Drive between Memorial College Avenue and Indian Creek Lane	Reconstruct 50 linear feet of sidewalk, beginning approximately 120 feet north of Indian Creek Lane along SB direction of N. Indian Creek Drive to approximately 70 feet north of Indian Creek Lane.	DeKalb County Transportation	Long Term	Low	High

ID	Location	Recommendation	Responsible Agency	Timeframe	Safety Benefit	Cost
80	N. Indian Creek Drive between Clarkston High School, Northern Entrance and Southern Entrance / Georgia State Exit Driveway	Repair approximately 25 linear feet of sidewalk, starting 80 feet south of Clarkston High School, Northern Entrance along SB direction of N. Indian Creek Drive.	DeKalb County Transportation	Long Term	Low	High
83	N. Indian Creek Drive between Clarkston High School, Northern Entrance and Southern Entrance / Georgia State Exit Driveway	Repair approximately 30 linear feet of sidewalk, starting approximately 200 feet south of Clarkston High School, Northern Entrance along SB direction of N. Indian Creek Drive.	DeKalb County Transportation	Long Term	Low	High
84	N. Indian Creek Drive between Clarkston High School, Northern Entrance and Southern Entrance / Georgia State Exit Driveway	Repair approximately 50 linear feet of sidewalk, from approximately 350 feet north of Clarkston High School southern entrance to 300 feet north of the entrance along SB direction of N. Indian Creek Drive.	DeKalb County Transportation	Long Term	Low	High
85	N. Indian Creek Drive between Clarkston High School, Northern Entrance and Southern Entrance / Georgia State Exit Driveway	Repair approximately 20 linear feet of sidewalk, approximately 170 feet north of Clarkston High School southern entrance along SB direction of N. Indian Creek Drive.	DeKalb County Transportation	Long Term	Low	High
97	N. Indian Creek Drive between Milligan Drive and SR 10 / Memorial	Construct approximately 750 feet of new sidewalk from near 452 North Indian Creek Drive to connect existing sidewalks along east side, SB direction N. Indian Creek Drive to Memorial Drive.	DeKalb County Transportation	Long Term	Low	High
98	N. Indian Creek Drive between Milligan Drive and SR 10 / Memorial	Repair approximately 200 linear feet of sidewalk along west side of roadway, SB direction of N. Indian Creek Drive from cemetery to approximately 450 N. Indian Creek Drive.	DeKalb County Transportation	Long Term	Low	High

Appendix G Safe Routes to School: Road Safety Survey Sample

Safe Routes to School: Road Safety Survey

Please complete this survey of nine questions to inform the Georgia Safe Routes to School team of safety issues near your school.

Name (optional)

You can also complete this survey online at <https://www.surveymonkey.com/r/TFKRLCD>.

Return paper surveys to your school; scan and e-mail to marielena@saferoutesga.org; or mail to AECOM c/o Elizabeth Yarnall, at 1360 Peachtree St NE, Ste 500, Atlanta, GA 30329

3. Relationship to School

- ☐ Student
- ☐ Parent or Caregiver
- ☐ Teacher
- ☐ School Staff (non-teacher)
- ☐ Community Member
- ☐ City/County Government Employee
- ☐ State Government Employee
- ☐ Other (please specify):

4. About how far is the school from your home?

- ☐ Less than 0.25 mile
- ☐ 0.25 to 0.50 mile
- ☐ 0.50 to 0.75 mile
- ☐ 0.75 to 1.0 mile
- ☐ 1.0 to 1.5 miles
- ☐ Greater than 1.5 miles away

5. What is the nearest intersection to your home (e.g. West Street and Elm Street)?

6. How do you (if you attend or work at the school) or your children travel to school on a normal weekday in the morning?

- ☐ Walk
- ☐ Transit
- ☐ Bicycle
- ☐ N/A
- ☐ School Bus
- Comment:
- ☐ Car/Automobile

7. How do you (if you attend or work at the school) or your children travel from school on a normal weekday in the afternoon?

- ☐ Walk
- ☐ Transit
- ☐ Bicycle
- ☐ N/A
- ☐ School Bus
- Comment:
- ☐ Car/Automobile

8. If you or your children do not walk or bicycle to the school, why not? Please check all that apply.

- ☐ Speed of traffic along route
- ☐ Amount of traffic along route (motor vehicle traffic)
- ☐ Availability of sidewalks or pathways
- ☐ Condition of sidewalks or pathways
- ☐ Availability of pedestrian crossings
- ☐ Condition of pedestrian crossings
- ☐ Safety of intersections along route
- ☐ Railroad crossing concerns
- ☐ Amount of signing and markings
- ☐ Amount of lighting
- ☐ Overgrown vegetation
- ☐ Ability of drivers to see pedestrians when turning onto roadway
- ☐ Other (please specify):
- ☐ N/A

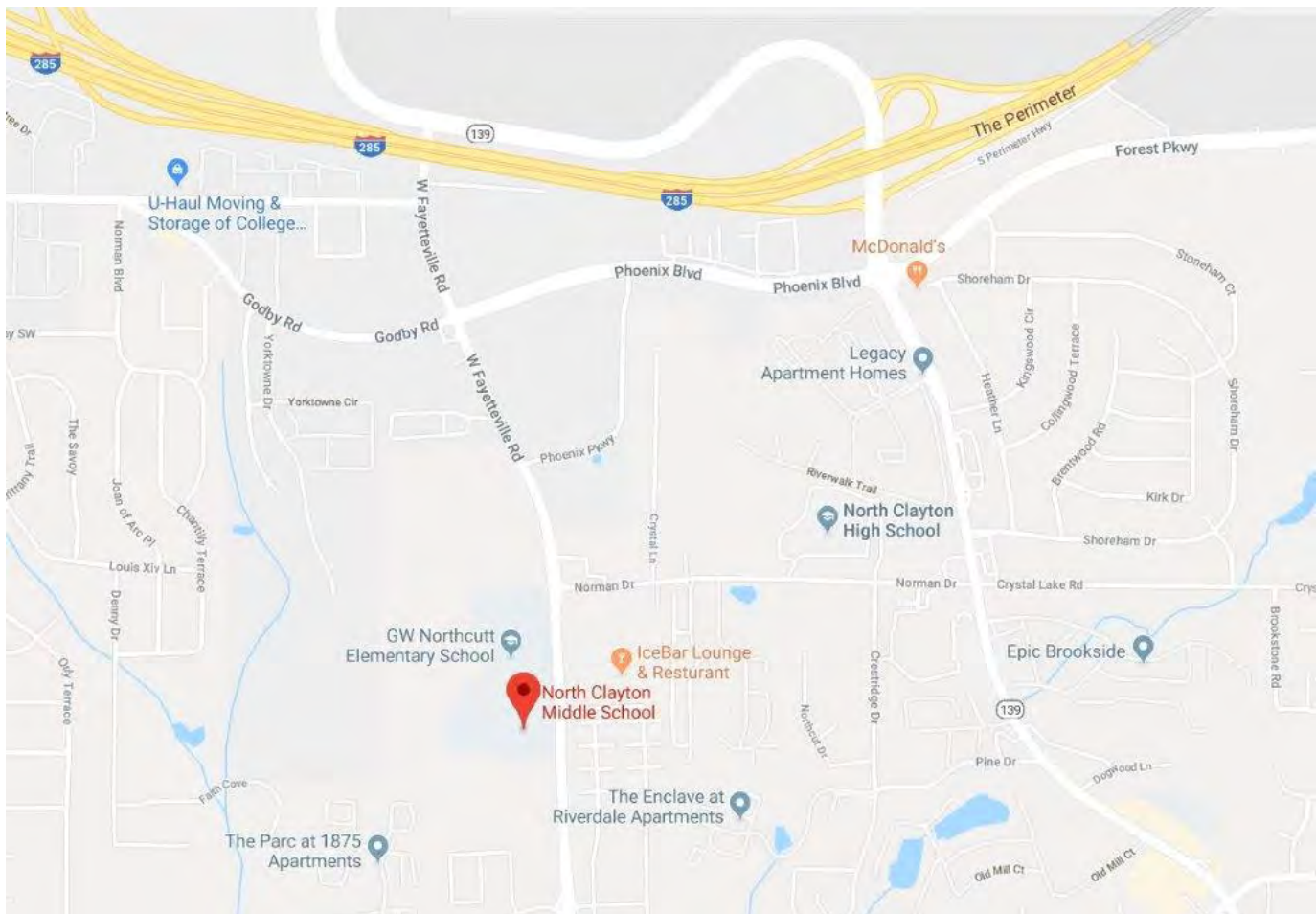
North Clayton Middle School

3. Are there any specific locations along your route to school that you think are unsafe? Why?

In addition to comments you provide above, you can comment on areas unsafe for bicycling and walking to school using the below map.

Do you have additional concerns or questions?

Contact your Safe Routes to School Coordinator: Marielena Gutiérrez; marielena@saferoutesga.org; 404-849-4517



Rutas Seguras para la Escuela: Encuesta de seguridad vial

Por favor, complete esta encuesta de nueve preguntas para informar al equipo de Rutas Seguras para la Escuela de Georgia cuestiones de seguridad alrededor de su escuela.

Nombre (opcional)

Usted también puede completar esta encuesta en línea en <https://www.surveymonkey.com/r/TF2K28F>. Devuelva las encuestas en papel a su escuela. Puede también escanearlas y mandarlas por correo electrónico a marielena@saferoutesga.org; o enviarlas por correo a AECOM c/o Elizabeth Yarnall, en la siguiente dirección: 1360 Peachtree St NE, Ste 500, Atlanta, GA 30329

3. Relación con la Escuela

- ☐ Estudiante
- ☐ Padre o Cuidador
- ☐ Maestro
- ☐ Personal de la Escuela (diferente a maestro)
- ☐ Miembro de la Comunidad
- ☐ Empleado del Gobierno (Condado o Ciudad)
- ☐ Empleado del Gobierno (Estado)
- ☐ Otro (por favor especifique):

4. Qué tan lejos esta la escuela de su casa?

- ☐ Menos de 0.25 milla
- ☐ De 0.25 a 0.50 millas
- ☐ De 0.50 a 0.75 millas
- ☐ De 0.75 a 1.0 millas
- ☐ De 1.0 a 1.5 millas
- ☐ Mas de 1.5 millas de distancia

5.Cuál es la intersección más cercana a su hogar (ej. West Street y Elm Street)?

6. Cómo va a la escuela (en caso de que usted estudie o trabaje en la escuela) o cómo van sus hijos en un día normal por la mañana?

- | | |
|---------------------------------------|--------------------------------|
| <input type="radio"/> Caminando | <input type="radio"/> Tránsito |
| <input type="radio"/> En Bicicleta | <input type="radio"/> N/A |
| <input type="radio"/> Bus-Escolar | Comentario: |
| <input type="radio"/> Carro/Automovil | |

7. Cómo regresa de la escuela (en caso de que usted estudie o trabaje en la escuela) o cómo regresan sus hijos de la escuela en un día normal por la mañana?

- | | |
|---------------------------------------|--------------------------------|
| <input type="radio"/> Caminando | <input type="radio"/> Tránsito |
| <input type="radio"/> En Bicicleta | <input type="radio"/> N/A |
| <input type="radio"/> Bus-Escolar | Comentario: |
| <input type="radio"/> Carro/Automovil | |

8. Si usted o sus hijos no caminan o van en bicicleta a la escuela, ¿cual es la razon? Por favor seleccione todas las que aplican.

- ☐ Velocidad del tráfico a lo largo de la ruta
- ☐ Cantidad de tráfico a lo largo de la ruta (tráfico de vehículos de motor)
- ☐ Disponibilidad de las aceras y caminerias
- ☐ Condiciones de las aceras y caminerias
- ☐ Disponibilidad de pasos de peatones
- ☐ Condición de los pasos de peatones
- ☐ Seguridad de las intersecciones a largo de la ruta
- ☐ Preocupación por el cruce de ferrocarriles
- ☐ Cantidad de signos y marcas
- ☐ Cantidad de luz
- ☐ Vegetación demasiado grande
- ☐ Habilidad de los conductores para ver a los peatones cuando cruzan hacia la carretera
- ☐ Otro (por favor especifique):
- ☐ N/A

North Clayton Middle School

3. ¿Hay algún lugar específico a lo largo de su ruta a la escuela que considere inseguro? ¿Por qué?

Además de los comentarios en el cuadro anterior, puede comentar acerca de áreas inseguras para andar en bicicleta y/o caminar a la escuela usando el mapa adjunto.

Tiene algun comentario adicional?

Envíe un Email or llame a su Coordinador de Rutas Seguras para la Escuela: Marielena Gutiérrez;
marielena@saferoutesga.org; 404-849-4517

