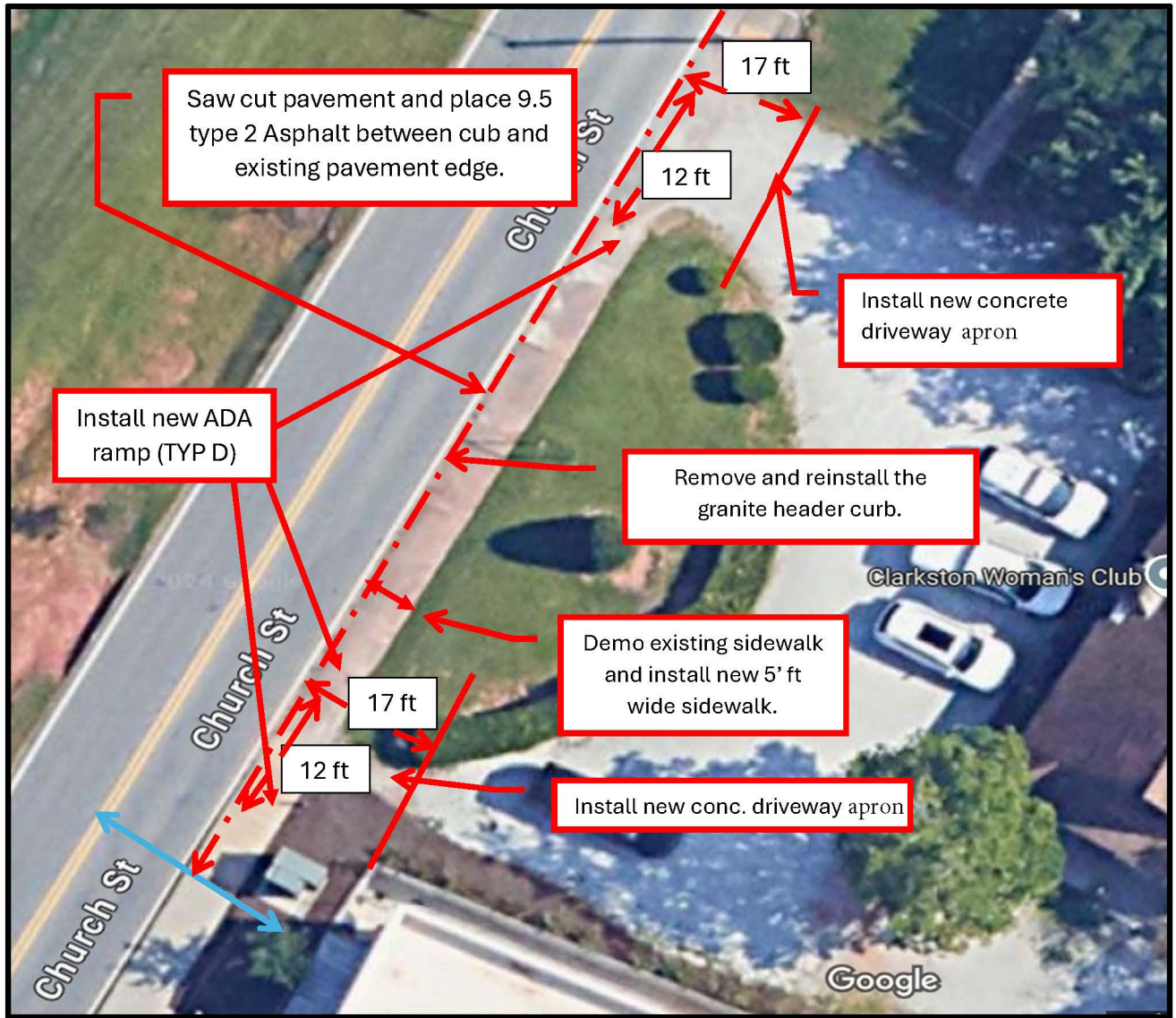
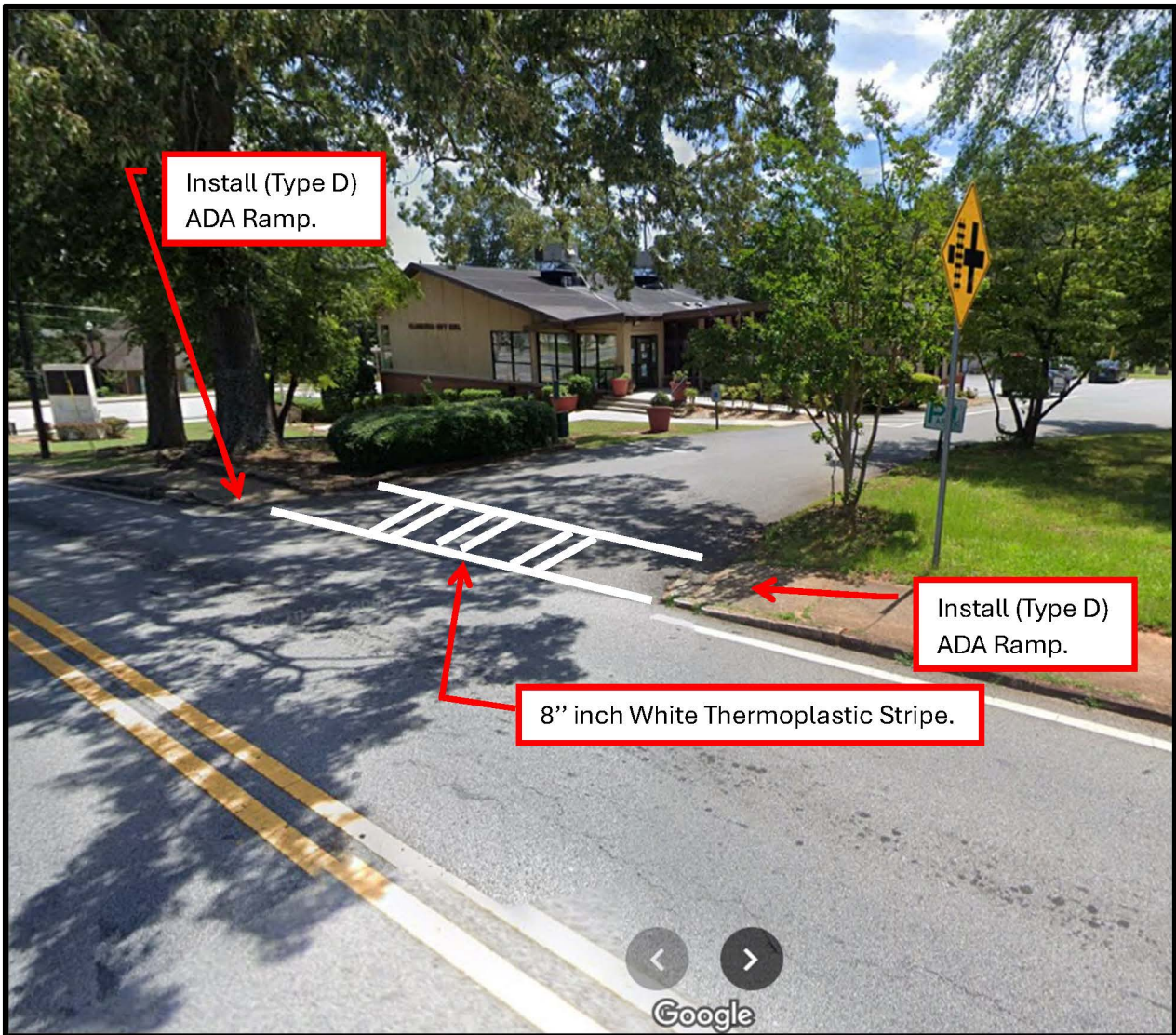
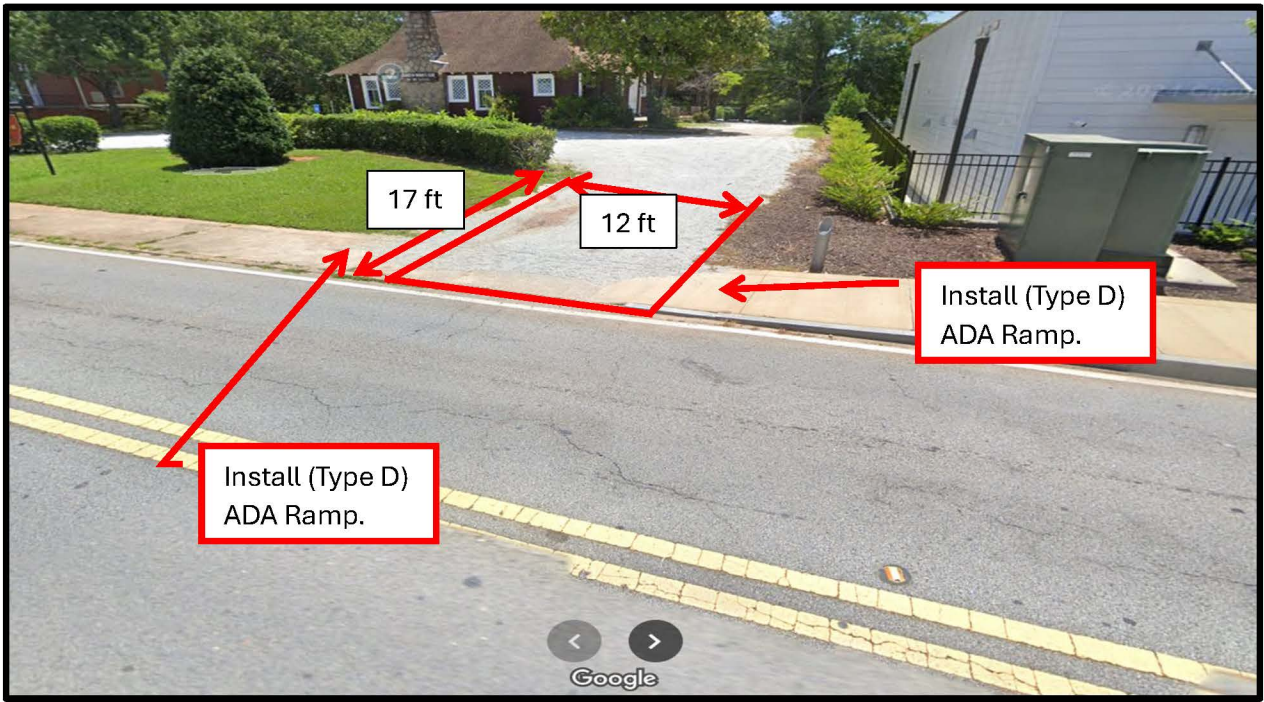
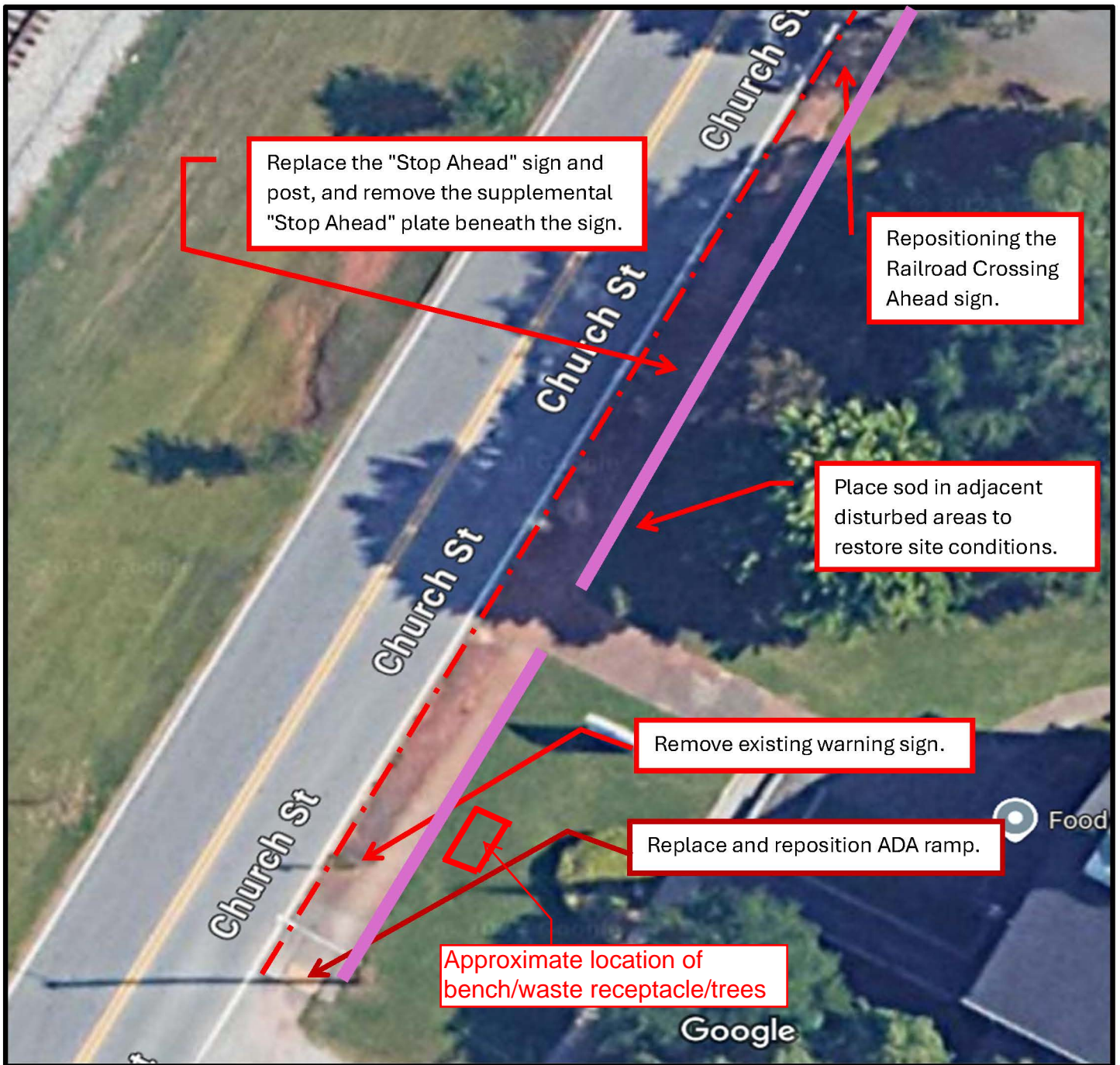


CHURCH STREET SIDEWALK - DRIVEWAY APRON RECONSTRUCTION - STREETSCAPE AMENITY

PROJECT #2







Replace the "Stop Ahead" sign and post, and remove the supplemental "Stop Ahead" plate beneath the sign.

Repositioning the Railroad Crossing Ahead sign.

Place sod in adjacent disturbed areas to restore site conditions.

Remove existing warning sign.

Replace and reposition ADA ramp.

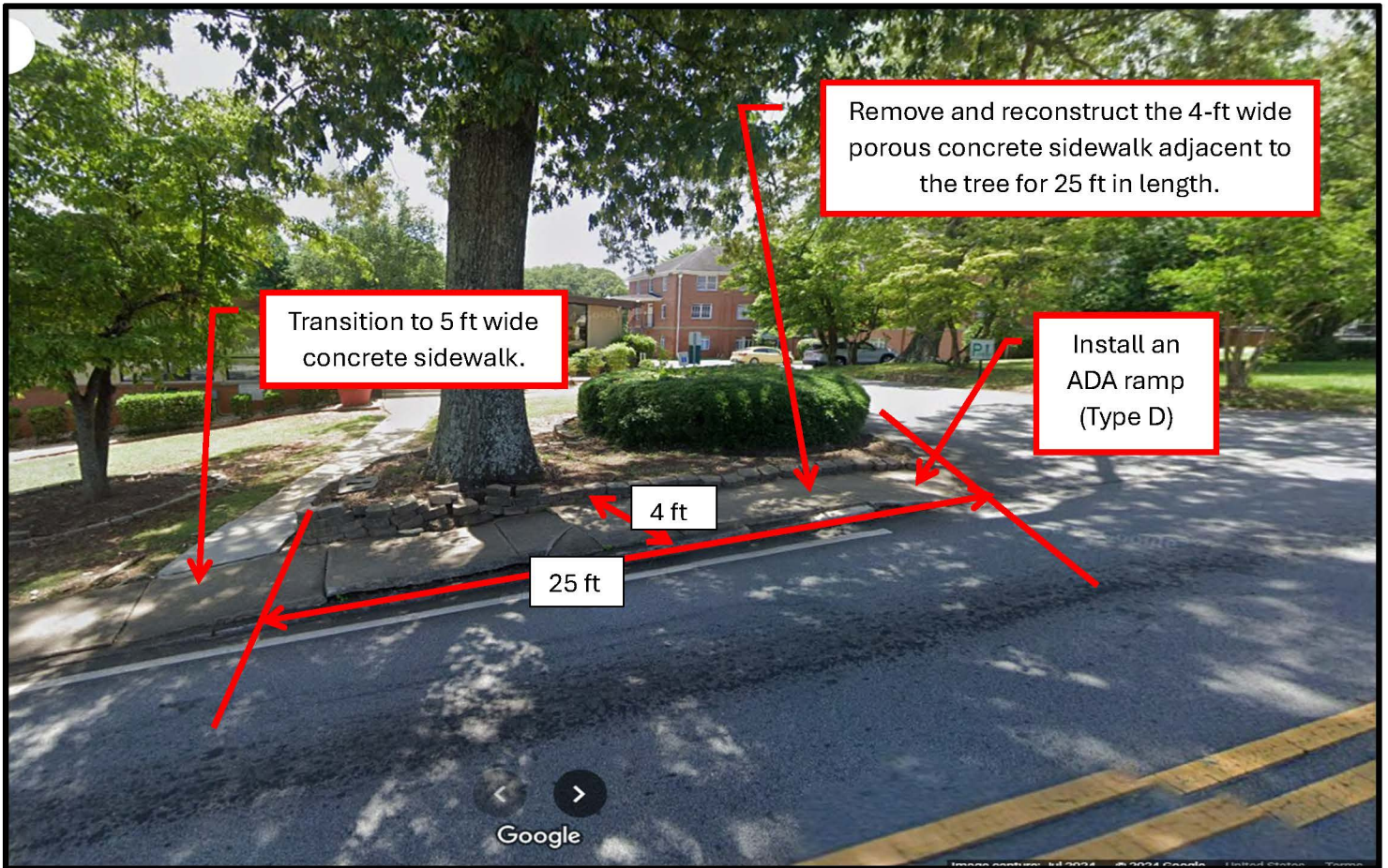
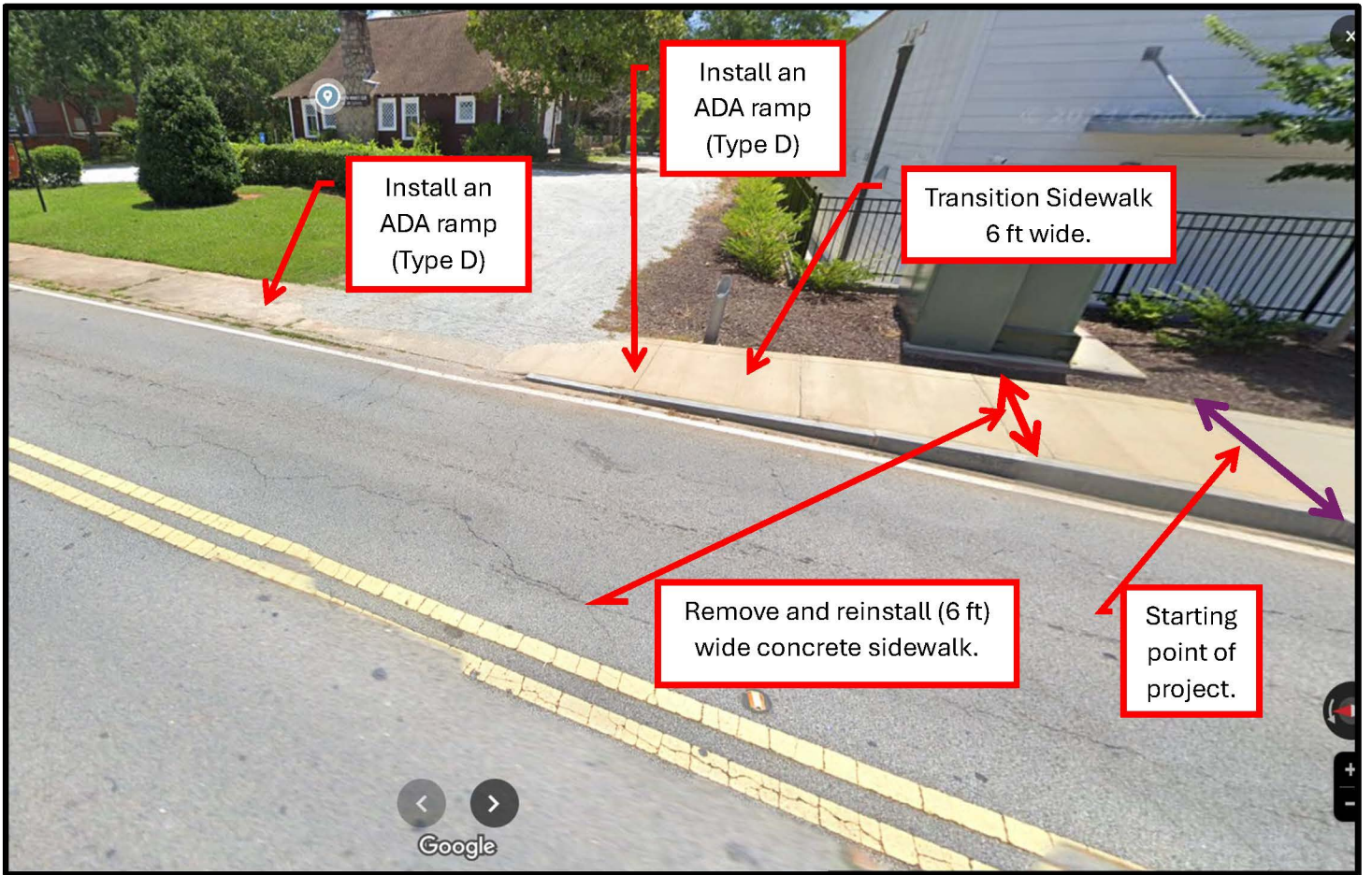
Approximate location of bench/waste receptacle/trees

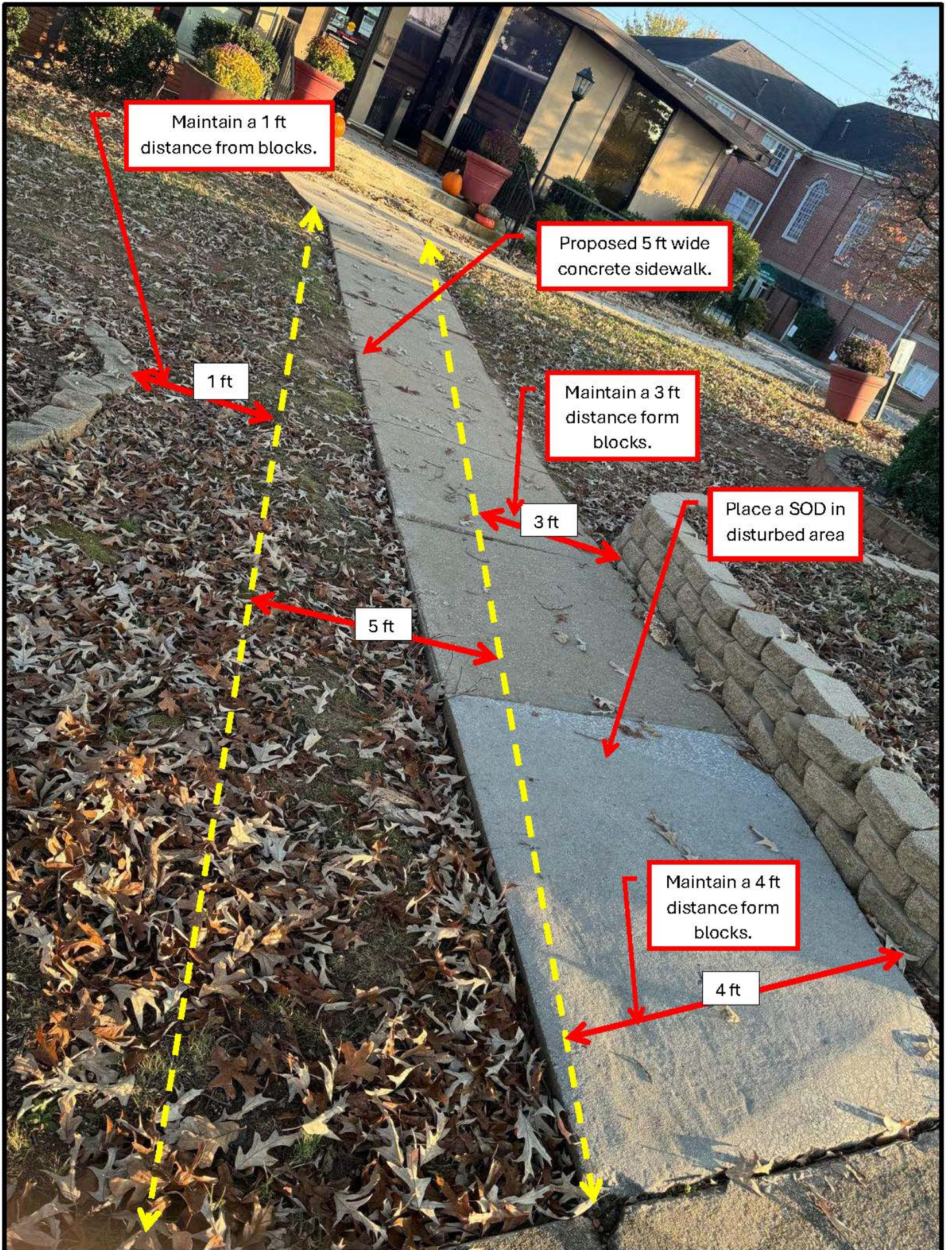


Replace the warning sign and post, and remove parking sign underneath it.

Avoid the utility pole.

Google





Maintain a 1 ft distance from blocks.

Proposed 5 ft wide concrete sidewalk.

1 ft

Maintain a 3 ft distance form blocks.

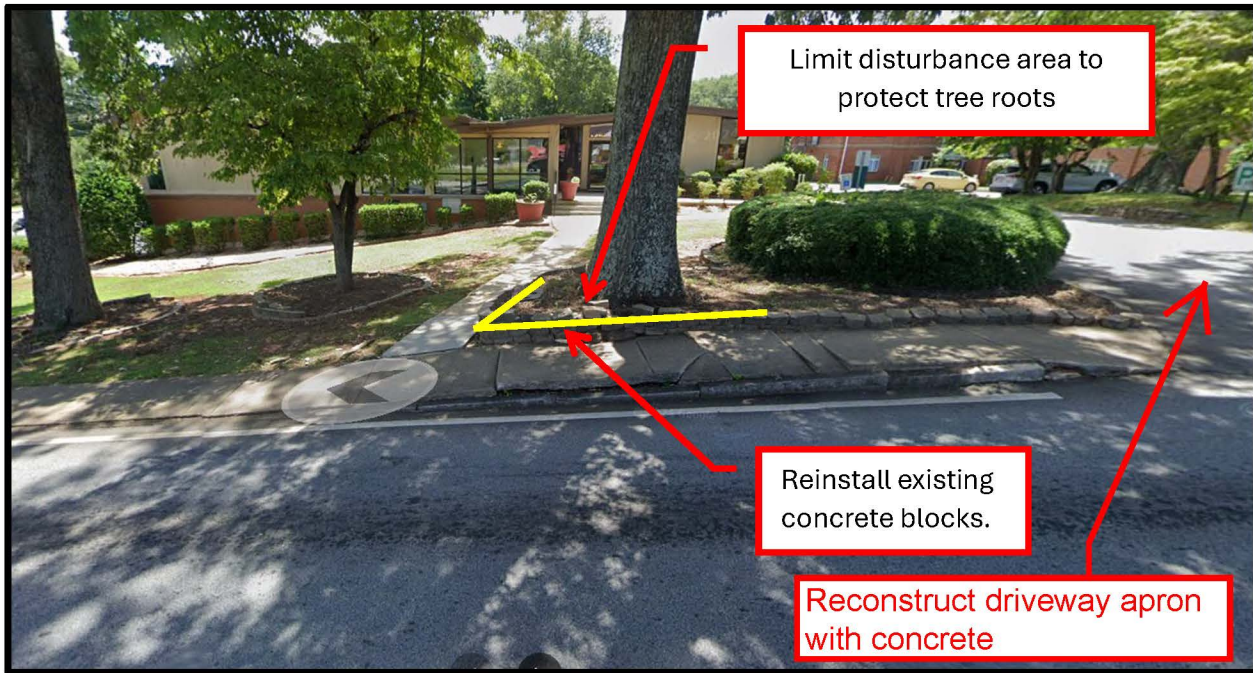
Place a SOD in disturbed area

3 ft

5 ft

Maintain a 4 ft distance form blocks.

4 ft



Note:

1. All ADA ramps should conform to Type D specifications as per GDOT requirements.
2. All sign dimensions must comply with MUTCD standards.
3. Construction joints should be placed every 5' ft along the sidewalk identified on project limit.